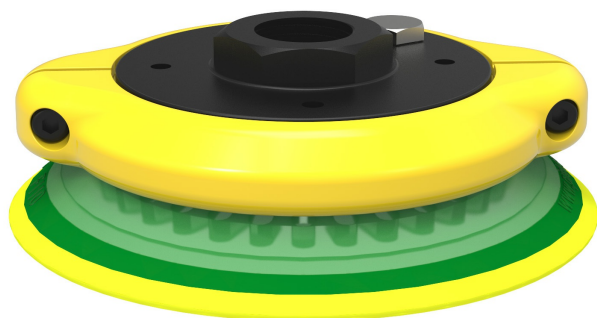


# Suction cup F110P Polyurethane 30/60, G1/2" female, with mesh filter, 0106355



- Suitable for flat and rough surfaces.
- Fair stability and little inherent movement.
- Recommended when the lifting force is parallel to the surface of the object.
- In the two-coloured suction cup the bellows and the sealing lip are of different hardnesses, which makes the suction cup strong and stable and, at the same time, soft and flexible.
- DURAFLEX® suction cups manufactured in a specially developed material that features the elasticity of rubber and wear resistance of polyurethane. The material does not leave any marks on the objects handled.

## General

Curve radius	250 mm
Movement, vertical max.	4 mm
Application	Mark Free, Dry sheet metal
Material	Polyurethane (PU30), Polyurethane (PU60)
Suction cup model	F
Suction cup shape	Flat
Volume	60 cm <sup>3</sup>
Weight	82 g

## Fitting

Fitting size	1/2"
Fitting style	Female
Fitting type	G-thread
Fitting option	Filter mesh

## Dimension

Height	36 mm
Outer diameter	115 mm

## Performance — lifting forces

		
20 -kPa	167 N	149 N
60 -kPa	432 N	441 N
90 -kPa	591 N	617 N

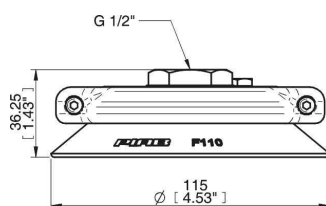
## Material

	Polyurethane (PU30)	Polyurethane (PU60)
Colour	Yellow	Green transparent
Hardness	30 °Shore A	60 °Shore A
Temperature	10 – 50 °C	10 – 50 °C

## Material resistance

	Polyurethane (PU30)	Polyurethane (PU60)
Alcohol	N/A	N/A
Concentrated acids	+	+
Ethanol	+	+
Hydrolysis	+	+
Methanol	-	-
Oil	+++	+++
Oxidation	-	-
Petrol	+	+
Wear resistance	+++	+++
Weather and ozone	+++	+++

## Dimensional drawings



## Spare parts

	Item no.
Suction cup F110P Polyurethane 30/60	0104725
Fitting 110, G1/2" female, with mesh filter	0100561
Cone valve for Fitting 110 & 150	3350034

## Accessories

	Item no.
Suction cup F110P Polyurethane 60	0111593
Suction cup F110P Polyurethane 30/60, for thread insert	0106796
Suction cup F110P Polyurethane 60, for thread insert	0107322
Fitting 110 G3/8" female, with mesh filter	0100557
Fitting 110, 3/8" NPSF female, with mesh filter	0100559
Fitting 110, G1/2" female, with cone valve	0100563
Thread insert G3/8" male, with O-ring and mesh filter	0107148