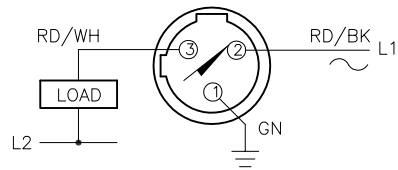


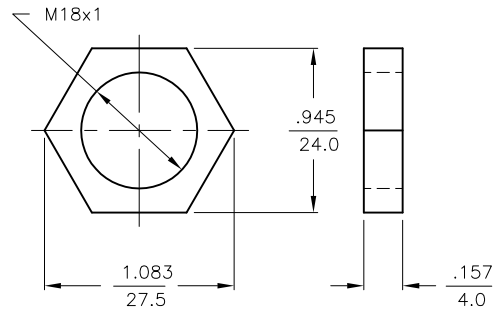
WIRING DIAGRAM



OUTPUT: ADZ30X2

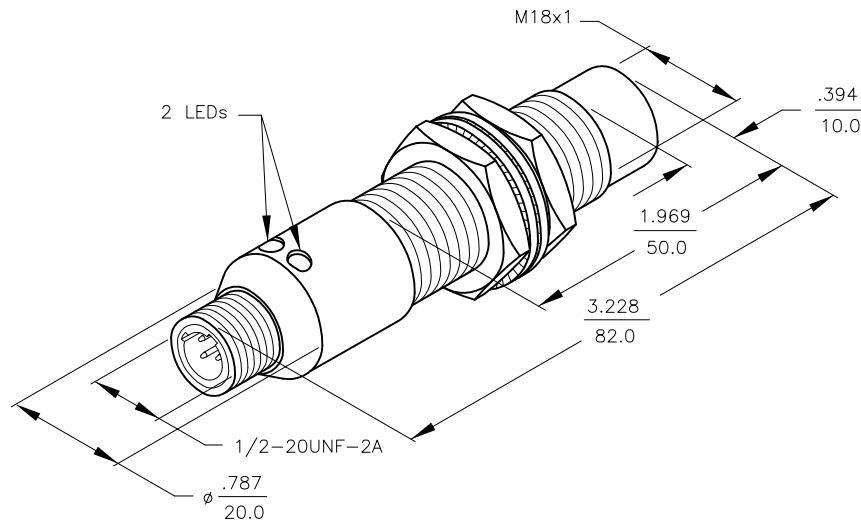
SHORT-CIRCUIT AND OVERLOAD PROTECTED

LOCKNUT LN-MT18



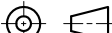
SPECIFICATIONS

OPERATING VOLTAGE	20-250 VAC 10-300 VDC
LINE FREQUENCY	40-60 Hz
DIFFERENTIAL TRAVEL (HYSTERESIS)	3-15% (5% TYPICAL)
VOLTAGE DROP ACROSS CONDUCTING SENSOR	≤6.0 V at 400 mA
OUTPUT FUNCTION	NORMALLY OPEN 2-WIRE AC/DC SELF-CONTAINED
SHORT-CIRCUIT PROTECTED	YES
TRIGGER CURRENT FOR OVERLOAD PROTECTION	AC: ≥440 mA; DC ≥ 330 mA
CONTINUOUS LOAD CURRENT	AC: ≤440 mA; DC ≤ 330 mA
OFF-STATE (LEAKAGE) CURRENT	≤1.7 mA
MINIMUM LOAD CURRENT	≥3.0 mA
INRUSH CURRENT	4 A (≤20 ms/10% Duty Cycle)
TIME DELAY BEFORE AVAILABILITY	≤120 ms
POWER-ON EFFECT PROTECTION	PER IEC 947-5-2
PROTECTION AGAINST TRANSIENTS	S KU, 10 ms, 10 kΩ
OPERATING TEMPERATURE	-25°C to +70°C (±10% DRIFT) -30°C to +85°C (±15% DRIFT)
ENCLOSURE	MEETS NEMA 1, 3, 4, 6, 13 AND IEC IP67
SHOCK	30 g, 11 ms
VIBRATION	55 Hz, 1 mm AMPLITUDE (IN ALL 3 PLANES)
LED FUNCTION	GREEN: STEADY - POWER ON FLASHING = SHORT-CIRCUIT WARNING YELLOW: OUTPUT ENERGIZED
RATED OPERATING DISTANCE(S _n)	12 mm = .472" (NOMINAL)
SWITCHING FREQUENCY	60 Hz
REPEATABILITY	≤2% of RATED OPERATING DISTANCE
MATING PLUGS/CABLES	3-PIN "MICROFAST" CONSTRUCTION



NOTES:

- WELD FIELD IMMUNE. SENSORS IS SUITABLE FOR USE ON RESISTANCE WELDING MACHINES.
- MATERIALS:
PTFE COATED BRASS BARREL.
CHROME PLATED BRASS CONNECTOR.
PTFE COATED BRASS LOCKNUTS.
BLACK CHROMATED STEEL LOCKWASHERS.
PTFE COATED PA 12-GF30 PLASTIC SENSING FACE.

RELATED DOCUMENTS		3RD ANGLE PROJECTION		<div>THIS DRAWING IS CONFIDENTIAL AND THE PROPERTY OF TURCK INC. USE OF THIS DOCUMENT WITHOUT WRITTEN PERMISSION IS PROHIBITED.</div> <div>TURCK INC</div> <div>High Technology Sensors and Automation Controls</div> <div>3000 CAMPUS DRIVE MINNEAPOLIS, MN 55441 1-800-544-7769 (763) 553-7300 (763) 553-0708 fax turck.com</div>			
1.							
2.							
3.							
4.							
MATERIAL SEE NOTE 2		DRFT IK		DATE 3/25/97		DESCRIPTION Ni12U-GT18-ADZ30X2-B3331	
		DSGN		SCALE NONE			
		FINISH		UNIT OF MEASUREMENT INCH [MILLIMETER] DO NOT SCALE THIS DRAWING		IDENTIFICATION NO. M4281423	
FILE: M4281423						SHEET 1 OF 1	
CONTACT TURCK FOR MORE INFORMATION							