

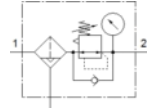
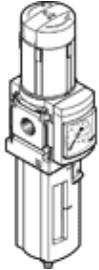
Filter regulator MS6-LFR-1/2-D6-CRV-AS

Part number: 529178

★ Core product range

Maximum output pressure 7 bar, 5 µm filter, with pressure gauge, lockable regulator head, plastic bowl with plastic bowl guard, fully automatic condensate drain, flow direction from left to right.

FESTO



Data sheet

| Feature | values |
|---|---|
| Size | 6 |
| Series | MS |
| Actuator lock | Rotary knob with lock with accessories, lockable |
| Assembly position | Vertical +/- 5° |
| Grade of filtration | 5 µm |
| Condensate drain | fully automatic |
| Design structure | Filter regulator with pressure gauge |
| Max. condensate volume | 38 ml |
| Controller function | Output pressure constant with secondary exhaust |
| Bowl guard | Plastic guard |
| Pressure gauge | with pressure gauge |
| Working pressure | 2 ... 12 bar |
| Pressure regulation range | 0.3 ... 7 bar |
| Max. pressure hysteresis | 0.25 bar |
| Standard nominal flow rate | 5,600 l/min |
| Operating medium | Compressed air in accordance with ISO8573-1:2010 [7:4:-] Inert gases |
| Corrosion resistance classification CRC | 2 |
| Storage temperature | -10 ... 60 °C |
| Air purity class at output | Compressed air in accordance with ISO8573-1:2010 [6:4:4] |
| Medium temperature | 5 ... 60 °C |
| Ambient temperature | 5 ... 60 °C |
| Product weight | 875 g |
| Mounting type | Optional Front panel installation Line installation with accessories |
| Pneumatic connection, port 1 | G1/2 |
| Pneumatic connection, port 2 | G1/2 |
| Materials note | Conforms to RoHS |
| Materials information for control panel | POM PA |
| Materials information for seals | NBR |
| Materials information for filter | PE |
| Materials information, housing | Aluminum die cast |
| Materials information for membrane | NBR |
| Materials information for bowl | PC |
| Material information, isolating disc | POM |