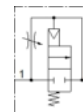
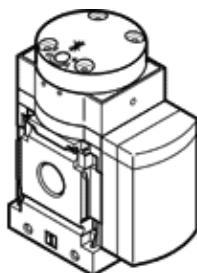


Pressure build-up valve MS6-DL-1/4

Part number: 529819

FESTO

Pneumatic, for gradual pressure build-up, direction of flow: from left to right.



Data sheet

Feature	values
Exhaust-air function	throttleable
Type of actuation	pneumatic
Assembly position	Any
Manual override	None
Design structure	Piston seat
Type of reset	mechanical spring
Type of piloting	direct
Pilot air supply	external
Flow direction	non reversible
Valve function	2/2
Working pressure	4 ... 18 bar
b value	0.54
C value	11.22 l/sbar
Standard nominal flow rate	2,800 l/min
Operating medium	Compressed air in accordance with ISO8573-1:2010 [7:4:4] Inert gases
Note on operating and pilot medium	Lubricated operation possible (subsequently required for further operation)
Corrosion resistance classification CRC	2
Medium temperature	-10 ... 60 °C
Ambient temperature	-10 ... 60 °C
Product weight	650 g
Mounting type	Optional Line installation with accessories
Pneumatic connection, port 1	G1/4
Pneumatic connection, port 2	G1/4
Materials note	Free of copper and PTFE Conforms to RoHS
Materials information for seals	NBR
Materials information, housing	Aluminum die cast