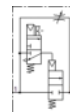
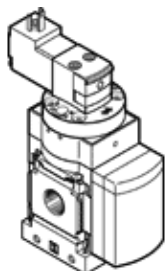


Pressure build-up valve MS6-DE-3/8-10V24

Part number: 542566

FESTO

To slowly pressurize and exhaust pneumatic systems, flow direction from left to right



Data sheet

Feature	values
Type of actuation	electrical
Assembly position	Any
Manual override	detenting Pushing
Design structure	Piston seat
Type of reset	mechanical spring
Type of piloting	Piloted
Pilot air supply	Internal
Flow direction	non reversible
Valve function	2/2
Switching position indicator	with accessories
Working pressure	4 ... 10 bar
b value	0.48
C value	21.05 l/sbar
Standard nominal flow rate	5,050 l/min
Duty cycle	100%
Characteristic coil data	24 V DC: 1.8 W
Operating medium	Compressed air in accordance with ISO8573-1:2010 [7:4:4] Inert gases
Note on operating and pilot medium	Lubricated operation possible (subsequently required for further operation)
Corrosion resistance classification CRC	2
Medium temperature	-10 ... 50 °C
Protection class	IP65
Ambient temperature	-10 ... 50 °C
Authorization	c UL - Recognized (OL)
Product weight	680 g
Electrical connection	Plug Cubic design Per DIN EN 175301-803 Design C
Signal status display	with accessories
Mounting type	Optional Line installation with accessories
Pneumatic connection, port 1	G3/8
Pneumatic connection, port 2	G3/8
Materials note	Conforms to RoHS
Materials information for seals	NBR
Materials information, housing	Aluminum die cast