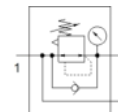
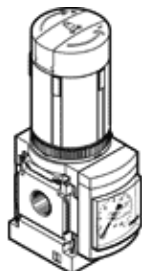


# Pressure regulator MS4-LRB-1/4-D7-AS

Part number: 529485

**FESTO**

For manifold assembly, 12 bar maximum output pressure, with pressure gauge, lockable regulator head, P2 connection at rear.



## Data sheet

Feature	values
Size	4
Series	MS
Actuator lock	Rotary knob with lock with accessories, lockable
Assembly position	Any
Design structure	directly-controlled diaphragm regulator with looped-through compressed air supply
Controller function	Output pressure constant with secondary exhaust with return flow
Pressure gauge	with pressure gauge
Working pressure	0.8 ... 14 bar
Pressure regulation range	0.5 ... 12 bar
Max. pressure hysteresis	0.25 bar
Standard nominal flow rate	1,500 l/min
Operating medium	Compressed air in accordance with ISO8573-1:2010 [7:4:4] Inert gases
Note on operating and pilot medium	Lubricated operation possible (subsequently required for further operation)
Corrosion resistance classification CRC	2
Storage temperature	-10 ... 60 °C
Medium temperature	-10 ... 60 °C
Ambient temperature	-10 ... 60 °C
Product weight	222 g
Mounting type	Optional Front panel installation Line installation with accessories
Pneumatic connection, port 1	G1/4
Pneumatic connection, port 2	G1/4
Materials note	Conforms to RoHS
Materials information for subbase	Aluminum die cast
Materials information for control panel	POM PA
Materials information for seals	NBR
Materials information, housing	Aluminum die cast
Materials information for membrane	NBR