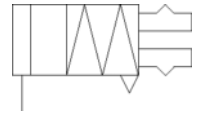
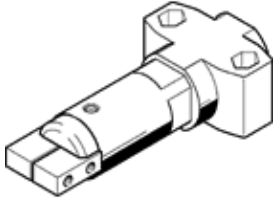


# Angle gripper HGWM-12-EZ-G6

Part number: 185702

FESTO

Micro, stroke compensation.



## Data sheet

Feature	values
Size	12
Max. angular gripper jaw backlash ax,ay	0.5 deg
Max. gripper jaw backlash Sz	0.03 mm
Max. opening angle	14 deg
Repetition accuracy, gripper	≤ 0.02 mm
Number of gripper fingers	2
Mode of operation	single-acting closed
Gripper function	Angle
Design structure	Inclined plane
Position detection	No
Working pressure	2 ... 8 bar
Max. operating frequency of gripper	4 Hz
Min. opening time at 6 bar	1.7 ms
Min. closing time at 6 bar	2.8 ms
Operating medium	Compressed air in accordance with ISO8573-1:2010 [7:-:-]
Corrosion resistance classification CRC	2
Ambient temperature	5 ... 60 °C
Spring force of stroke compensator	10 ... 23 N
Spring return moment	1.5 Ncm
Total gripping torque at 6 bar, opening	76 Ncm
Max. force on gripper jaw Fz static	20 N
Max. torque at gripper Mx static	40 Ncm
Max. torque at gripper My static	40 Ncm
Max. torque at gripper Mz static	40 Ncm
Product weight	75 g
Mounting type	with internal (female) thread
Pneumatic connection	M3
Materials note	Free of copper and PTFE
Materials information for cover cap	POM
Materials information, housing	High alloy steel, non-corrosive
Materials information for gripper jaws	High alloy steel