

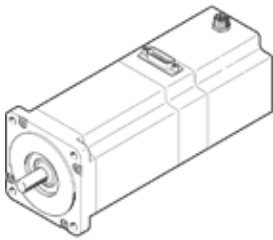
# Stepper motor EMMS-ST-87-L-SEB-G2

Part number: 1370494

☆ Core product range

Without gear unit/with brake.

FESTO



## Data sheet

Feature	values
Stepper angle at full step	1.8 deg
Stepper angle tolerance	±5%
Rotor position sensor	Incremental encoder
Rotary position encoder interface	RS422 TTL AB-channel + zero index
Rotary position encoder measuring principle	Optical
Max. speed	430 1/min
Operating voltage DC for brake	24 V
Insulation protection class	B
Power consumption, brake	11 W
Nominal operating voltage DC	48 V
Nominal motor current	9.5 A
Winding resistance phase	0.23 Ohm
Winding inductance phase	2.7 mH
Voltage constant, phase	77.2 mVmin
Rating class according to EN 60034-1	S1
CE symbol (see declaration of conformity)	according to EU-EMV guideline
Corrosion resistance classification CRC	1
Storage temperature	-20 ... 70 °C
Relative air humidity	0 - 85 %
Protection class	IP54
Ambient temperature	-10 ... 50 °C
Thermal class according to EN 60034-1	B
Authorization	RCM Mark c UL us - Recognized (OL)
Overall mass moment of inertia at power take-off	3.07 kgcm <sup>2</sup>
Brake holding torque	2 Nm
Motor holding torque	9.3 Nm
Mass moment of inertia of brake	0.07 kgcm <sup>2</sup>
Mass moment of inertia of rotor	3 kgcm <sup>2</sup>
Permissible axial shaft load	65 N
Permissible radial shaft load	200 N
Product weight	5,000 g
Electrical connector system	Plug
Materials note	Conforms to RoHS
Conforms to standard	IEC 60034