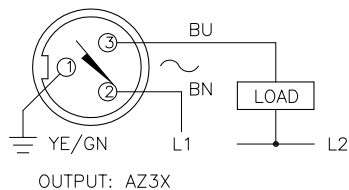
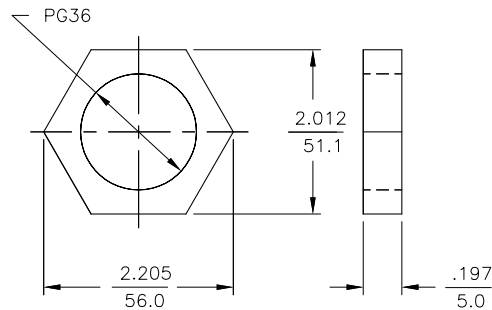


# WIRING DIAGRAMS



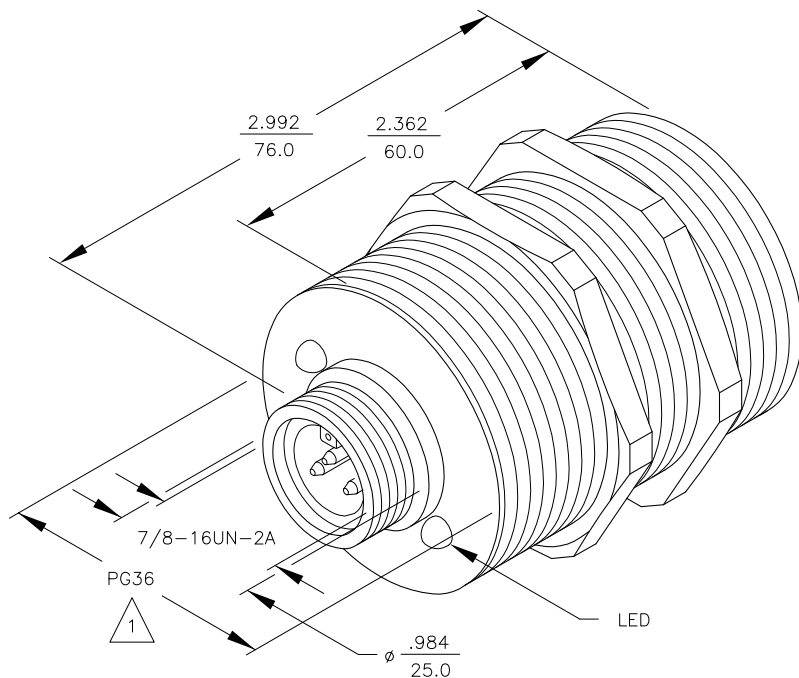
WARNING: NO SHORT-CIRCUIT PROTECTION.  
ALWAYS WIRE A LOAD IN SERIES WITH THE SENSOR.

# LOCKNUT LN-PG36



# SPECIFICATIONS

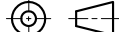
OPERATING VOLTAGE	20-250 VAC/DC
LINE FREQUENCY	40-60 Hz
DIFFERENTIAL TRAVEL (HYSTERESIS)	3-15% (5% TYPICAL)
VOLTAGE DROP ACROSS CONDUCTING SENSOR	≤7.0 V at 500 mA
OUTPUT FUNCTION -AZ	NORMALLY OPEN 2-WIRE AC SELF-CONTAINED
SHORT-CIRCUIT PROTECTED	NO
CONTINUOUS LOAD CURRENT	≤500 mA
OFF-STATE (LEAKAGE) CURRENT	≤1.7 mA
MINIMUM LOAD CURRENT	≥5.0 mA
INRUSH CURRENT	≤8.0 A ≤10 ms/5 Hz)
TIME DELAY BEFORE AVAILABILITY	≤80 ms
POWER-ON EFFECT PROTECTION	INCORPORATED
PROTECTION AGAINST TRANSIENTS	5 kV, 10 ms, 10 kΩ
OPERATING TEMPERATURE	-25°C to +70°C (-13°F to +158°F)
ENCLOSURE	MEETS NEMA 1, 3, 4, 6, 13 AND IEC IP67
SHOCK	30 g, 11 ms
VIBRATION	55 Hz, 1 mm AMPLITUDE (IN ALL 3 PLANES)
LED FUNCTION	RED: OUTPUT ENERGIZED
SENSING RANGE	20 mm = .787" (NOMINAL)
SWITCHING FREQUENCY	20 Hz
REPEATABILITY	≤2% of RATED OPERATING DISTANCE
SHIELDED	YES
MATING PLUGS/CABLES	3-PIN "MINIFAST" CONSTRUCTION



## NOTES:

1. EUROPEAN TYPE PIPE THREAD. APPROXIMATELY 1.850"/47 mm IN DIAMETER.

SOURCE DRAWING - FOR REFERENCE ONLY

RELATED DOCUMENTS  1.  2.  3.  4.	3RD ANGLE PROJECTION	<div>THIS DRAWING IS PROPERTY OF TURCK INC. USE OF THIS DOCUMENT WITHOUT WRITTEN PERMISSION IS PROHIBITED.</div>	<div><div>TURCK inc</div><div>High Technology Sensors and Automation Controls</div></div> <div>3000 CAMPUS DRIVE MINNEAPOLIS, MN 55441 1-800-544-7769 (763) 553-7300 (763) 553-0708 fax turck.com</div>			
						
MATERIAL  BRASS BARREL	<div>ALL DIMENSIONS DISPLAYED ON THIS DRAWING ARE FOR REFERENCE ONLY</div> <div>CONTACT TURCK FOR MORE INFORMATION</div>	DRFT  GMB	DATE  6/23/88	DESCRIPTION  B120-G47-AZ3X-B2131		
		DSGN	SCALE  NONE			
FINISH  COPPER/NICKEL/ CHROME PLATING			UNIT OF MEASUREMENT  INCH [ MILLIMETER ]		IDENTIFICATION NO.  M4375900	REV  D
			DO NOT SCALE THIS DRAWING		FILE: M4375900	SHEET 1 OF 1

D	UPDATE OPERATING VOLTAGE, SEE ECO	RWC	08/09/07	18310
REV	DESCRIPTION	BY	DATE	ECO NO.