



Figure similar

REV. COMB.,AC3, 7.5KW/400V AC220V 50HZ/240V 60HZ 3-POLE, SZ S0 SCREW TERMINAL ELECTR. AND MECH. INTERLOCK 2NO INTEGR.

product brand name	SIRIUS
Product designation	reversing contactor assembly 3RA23
Manufacturer article number	
<ul style="list-style-type: none">1 of the supplied contactor2 of the supplied contactorof the supplied RH assembly kit	3RT2025-1AL20 3RT2025-1AL20 3RA2923-2AA1

General technical data:	
Size of contactor	S0
Product expansion	
<ul style="list-style-type: none">Auxiliary switch	Yes
Insulation voltage	
<ul style="list-style-type: none">with degree of pollution 3 Rated value	690 V
Surge voltage resistance Rated value	6 kV
Protection class IP	
<ul style="list-style-type: none">on the front	IP20
Degree of pollution	3
Mechanical service life (switching cycles)	
<ul style="list-style-type: none">of the contactor typicalof the contactor with added auxiliary switch block typical	10 000 000 10 000 000
Equipment marking	
<ul style="list-style-type: none">acc. to DIN EN 81346-2	Q
Ambient conditions:	
Installation altitude at height above sea level maximum	2 000 m

Ambient temperature	
• during operation	-25 ... +60 °C
• during storage	-55 ... +80 °C
Main circuit:	
Number of poles for main current circuit	3
Number of NO contacts for main contacts	3
Number of NC contacts for main contacts	0
Operating voltage	
• at AC-3 Rated value maximum	690 V
Operating current	
• at AC-1 at 400 V	
— at ambient temperature 40 °C Rated value	40 A
— at ambient temperature 60 °C Rated value	35 A
• at AC-2 at 400 V Rated value	17 A
• at AC-3	
— at 400 V Rated value	17 A
Operating current	
• with 1 current path at DC-1	
— at 24 V Rated value	35 A
— at 110 V Rated value	4.5 A
• with 2 current paths in series at DC-1	
— at 24 V Rated value	35 A
— at 110 V Rated value	35 A
• with 3 current paths in series at DC-1	
— at 24 V Rated value	35 A
— at 110 V Rated value	35 A
Operating current	
• with 1 current path at DC-3 at DC-5	
— at 24 V Rated value	20 A
— at 110 V Rated value	2.5 A
• with 2 current paths in series at DC-3 at DC-5	
— at 110 V Rated value	15 A
— at 24 V Rated value	35 A
• with 3 current paths in series at DC-3 at DC-5	
— at 110 V Rated value	35 A
— at 24 V Rated value	35 A
No-load switching frequency	1 500 1/h
Operating frequency	
• at AC-1 maximum	1 000 1/h
• at AC-2 maximum	1 000 1/h
• at AC-3 maximum	1 000 1/h

- at AC-4 maximum

300 1/h

Control circuit/ Control:

Type of voltage of the control supply voltage	AC
Control supply voltage 1 at AC	
• at 50 Hz Rated value	220 V
• at 60 Hz Rated value	240 V
Operating range factor control supply voltage rated value of the magnet coil at AC	
• at 50 Hz	0.8 ... 1.1
• at 60 Hz	0.8 ... 1.1
Apparent pick-up power of the magnet coil at AC	
• at 50 Hz	65 V·A
Inductive power factor with closing power of the coil	
• at 50 Hz	0.82
Apparent holding power of the magnet coil at AC	
• at 50 Hz	8.5 V·A
Inductive power factor with the holding power of the coil	
• at 50 Hz	0.25

Auxiliary circuit:

Number of NC contacts	
• for auxiliary contacts	
— per direction of rotation	0
— instantaneous contact	0
— lagging switching	0
Number of NO contacts	
• for auxiliary contacts	
— per direction of rotation	0
— instantaneous contact	0
— leading contact	0
Operating current of the auxiliary contacts at AC-12 maximum	10 A
Operating current of the auxiliary contacts at AC-15	
• at 230 V	6 A
• at 400 V	3 A
Operating current of the auxiliary contacts at DC-13	
• at 24 V	10 A
• at 60 V	2 A
• at 110 V	1 A
• at 220 V	0.3 A
Contact reliability of the auxiliary contacts	< 1 error per 100 million operating cycles

UL/CSA ratings:

Full-load current (FLA) for three-phase AC motor <ul style="list-style-type: none">• at 480 V Rated value• at 600 V Rated value	14 A 17 A
yielded mechanical performance [hp] <ul style="list-style-type: none">• for single-phase AC motor<ul style="list-style-type: none">— at 110/120 V Rated value— at 230 V Rated value• for three-phase AC motor<ul style="list-style-type: none">— at 220/230 V Rated value— at 460/480 V Rated value— at 575/600 V Rated value	1 hp 3 hp 5 hp 10 hp 15 hp
Contact rating of the auxiliary contacts acc. to UL	A600 / Q600

Short-circuit:

Design of the fuse link <ul style="list-style-type: none">• for short-circuit protection of the main circuit<ul style="list-style-type: none">— with type of assignment 1 required— with type of assignment 2 required• for short-circuit protection of the auxiliary switch required	gL/gG LV HRC 3NA, DIAZED 5SB, NEOZED 5SE: 63 A gL/gG LV HRC 3NA, DIAZED 5SB, NEOZED 5SE: 25 A fuse gL/gG: 10 A
--	--

Installation/ mounting/ dimensions:

mounting position	+/-180° rotation possible on vertical mounting surface; can be tilted forward and backward by +/- 22.5° on vertical mounting surface
Mounting type	screw and snap-on mounting onto 35 mm standard mounting rail
Height	101 mm
Width	90 mm
Depth	97 mm
Required spacing <ul style="list-style-type: none">• with side-by-side mounting<ul style="list-style-type: none">— forwards— Backwards— upwards— downwards— at the side• for grounded parts<ul style="list-style-type: none">— forwards— Backwards— upwards— at the side— downwards	6 mm 0 mm 6 mm 6 mm 6 mm 6 mm 0 mm 6 mm 6 mm 6 mm

• for live parts	
— forwards	6 mm
— Backwards	0 mm
— upwards	6 mm
— downwards	6 mm
— at the side	6 mm

Connections/ Terminals:

Type of electrical connection	
• for main current circuit	screw-type terminals
• for auxiliary and control current circuit	screw-type terminals
Type of connectable conductor cross-section	
• for main contacts	
— single or multi-stranded	2x (1 ... 2,5 mm ²), 2x (2,5 ... 10 mm ²)
— finely stranded with core end processing	2x (1 ... 2,5 mm ²), 2x (2,5 ... 6 mm ²), 1x 10 mm ²
• for AWG conductors for main contacts	2x (16 ... 12), 2x (14 ... 8)
Type of connectable conductor cross-section	
• for auxiliary contacts	
— single or multi-stranded	2x (0,5 ... 1,5 mm ²), 2x (0,75 ... 2,5 mm ²)
— finely stranded with core end processing	2x (0,5 ... 1,5 mm ²), 2x (0,75 ... 2,5 mm ²)
• for AWG conductors for auxiliary contacts	2x (20 ... 16), 2x (18 ... 14)






Safety related data:

B10 value with high demand rate acc. to SN 31920	1 000 000
Proportion of dangerous failures	
• with low demand rate acc. to SN 31920	40 %
• with high demand rate acc. to SN 31920	75 %
T1 value for proof test interval or service life acc. to IEC 61508	20 y

Communication/ Protocol:

Product function Bus communication	No
Protocol is supported	
• AS-interface protocol	No

Certificates/ approvals:

General Product Approval			Declaration of Conformity	Test Certificates	Shipping Approval
				spezielle Prüfbescheinigungen n	
CSA	UL		EG-Konf.		ABS

Shipping Approval					
					
BUREAU VERITAS	DNV	GL	LRS	PRS	RINA

Shipping Approval	other
	Umweltbestätigung
RMRS	

Further information

Information- and Downloadcenter (Catalogs, Brochures,...)

<http://www.siemens.com/industrial-controls/catalogs>

Industry Mall (Online ordering system)

<http://www.siemens.com/industrymall>

Cax online generator

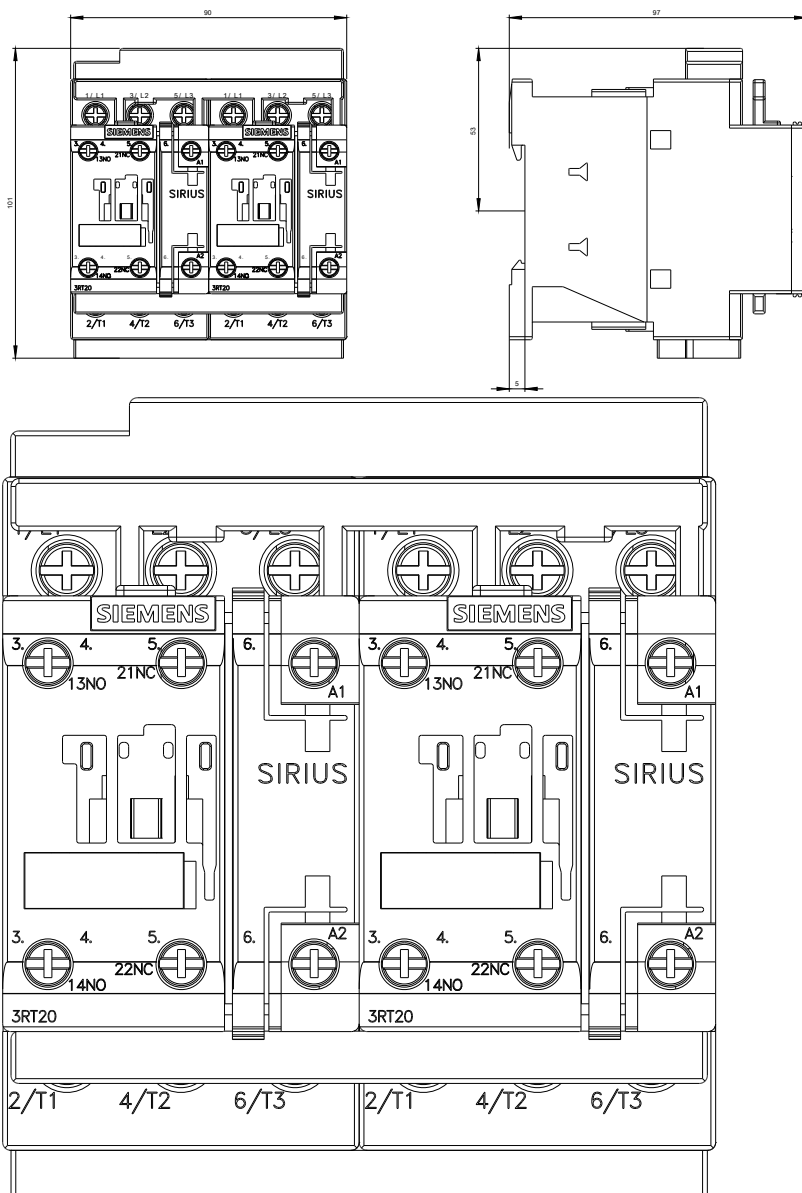
<http://support.automation.siemens.com/WW/CAXorder/default.aspx?lang=en&mlfb=3RA23258XB301AP6>

Service&Support (Manuals, Certificates, Characteristics, FAQs,...)

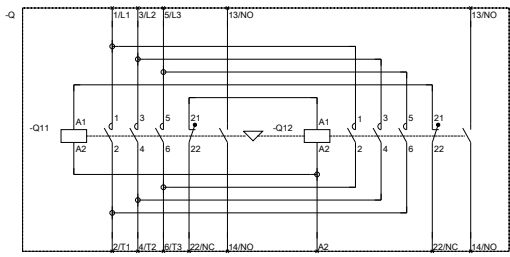
<https://support.industry.siemens.com/cs/ww/en/ps/3RA23258XB301AP6>

Image database (product images, 2D dimension drawings, 3D models, device circuit diagrams, EPLAN macros, ...)

http://www.automation.siemens.com/bilddb/cax_de.aspx?mlfb=3RA23258XB301AP6&lang=en



WENDEKOMBINATION BGR. S0



REVERSING COMB. SZ S0

last modified:

29.06.2015