



# DYE HOUSE

*Olneyville, Providence*

Dye House is an invisible service boutique hotel and event space offering a unique, thoughtfully-curated guest experience, designed for a diverse set of occasions and gatherings.



# INSPIRED BY History Design Community



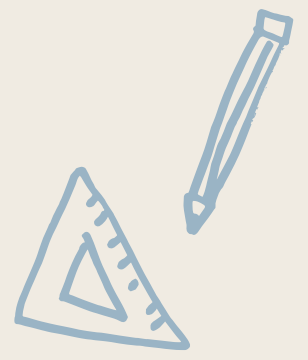
Once a dye house and weaving room for American Woolen & the Weybosset Mill Complex, later a ceramics studio for J Schatz, this building has a rich history. Today, Dye House is a destination for travelers and locals, a meeting place for the community and event space where family and friends can gather and celebrate.



# HISTORY



DYE HOUSE  
2020



2007  
STUDIO AD  
architecture

MODERN TRUCKING

1956

1980s

ALHBORG & SONS  
furniture making



2015

J. SCHATZ pottery studio



AMERICAN WOOLEN  
purchases the company  
and complex

1900

1864

WEYBOSSET MILLS opens under  
the Weybosset Corporation

1880

46 DIKE STREET  
The Dye House  
and Weaving Room  
are built



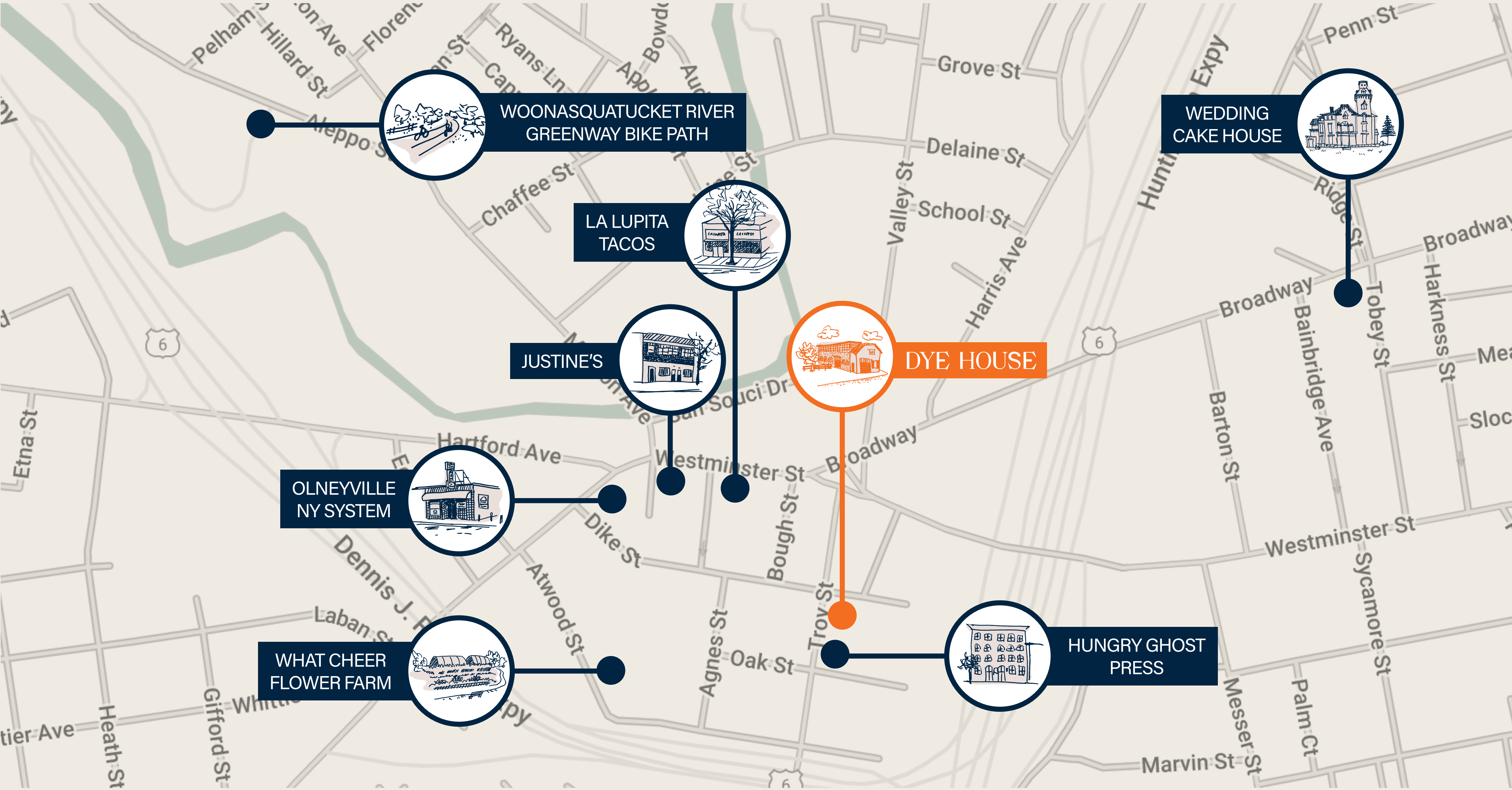
1934-1950

WELSH MANUFACTURING  
leases the mills from American  
Woolen for the production of  
fountain pens and eye glasses



DYE HOUSE

# LOCATION

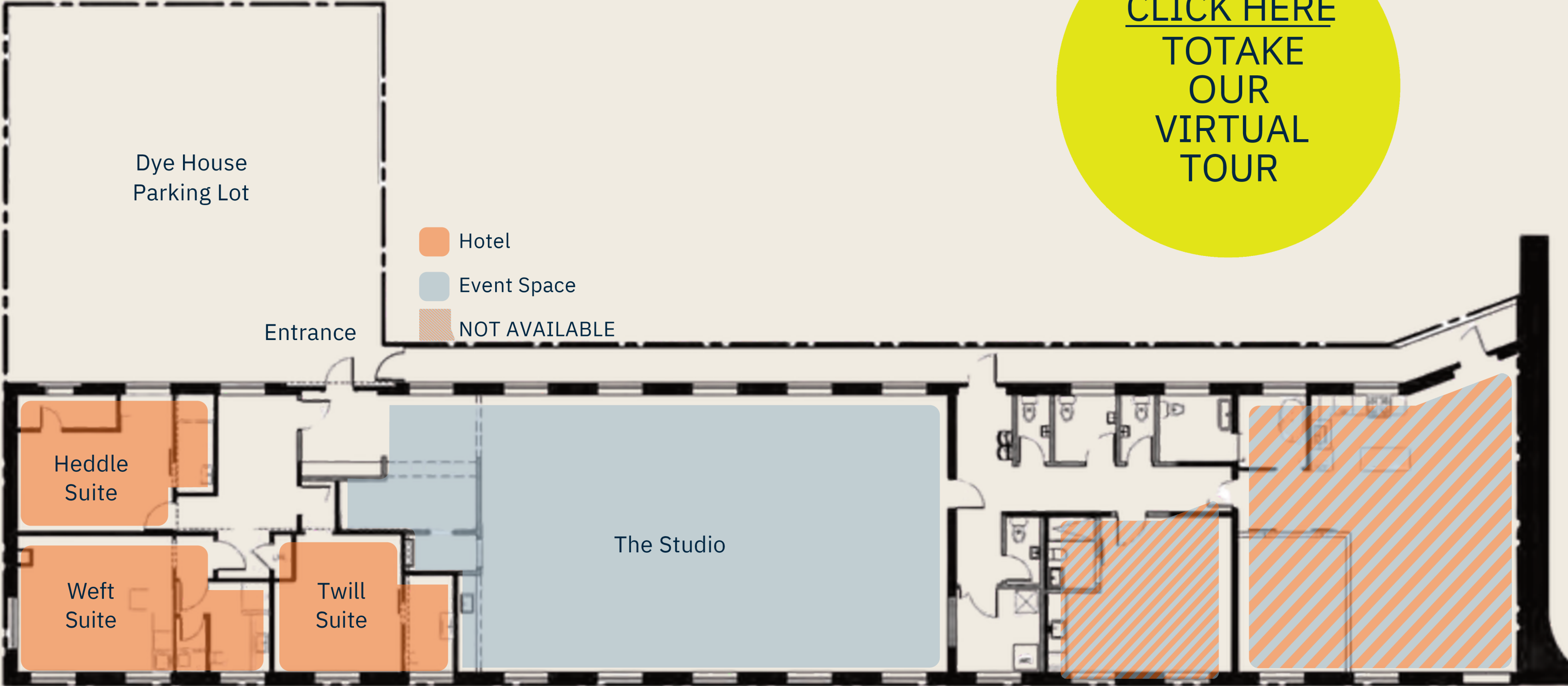


DYE HOUSE



# THE SPACE

[CLICK HERE  
TO TAKE  
OUR  
VIRTUAL  
TOUR](#)



# THE STUDIO

The Studio is our dedicated event space framed by twenty-foot gabled ceilings, the original red brick floor and dozens of windows, the atmosphere is one of expansion and intimacy—ideal for any celebration.

This space is a haven for artists to display their work, bringing community together, a meeting space for remote teams, and the perfect canvas for a photo or film shoot. Dye House is a place to inspire and be inspired.

*\*Can accommodate up to 120 guests  
cocktail style*









# THE SUITES



## WEFT SUITE

A serene balance of graphic and romantic, this space feels like the perfect little apartment for one or two guests. With a Pierre Frey mural inspired by 18th century French art and a bold checkerboard rug, the atmosphere is soothing and uplifting. Mix a cocktail or cook a simple dinner in the well-appointed kitchenette.



## TWILL SUITE

The ultimate space to snuggle, sip or prep for a night out. Mulberry accents and expansive patterns set the restorative mood, and a chocolate-hued bed nook takes the relaxation to a whole new level. Jot down your thoughts or write a postcard home at the classic HAY desk.



## HEDDLE SUITE

Ideal for lazy days, festive nights and everything in between, this space finds the unexpected harmony between contemporary millwork, pale Newport stripe wallpaper and a brutalist-inspired table. It's New England design turned on its head. Savor your morning pour over or pour our in-room cocktails at the built-in desk beneath a sunlit (or moonlit) window.

*Each suite can accommodate 2 guests.*



# KEEP IT LOCAL



DYE HOUSE



MI SUEÑO BAKERY



BĀS



BAKED BY BRE





# THINGS TO KNOW

## AMENITIES

Use of 6 resin 6ft tables, 4 high top cocktail rounds, WiFi, Sonos speaker, projector and screen, and 10 farmhouse tables + 60 farmhouse chairs are available to rent out.

## BATHROOMS

4 public bathrooms located near the Studio.

## CATERER/BARTENDER/ STAFFING

We welcome all food and beverage vendors to work in our space. When not using a full service caterer, there must be enough staff who will be responsible for setting up tables, clearing tables throughout the night, breakdown at the end of your event and dispose of all trash. Anyone serving alcohol must be certified and all vendors on site must provide a certificate of insurance.

## END TIMES

DJ/Band and bar must shut down no later than 11pm. If you are staying for the weekend once the DJ/Band shuts down, you have the option to switch over to the Sonos speakers. There will be a \$1,000 fine applied if your event goes past end time.

## DECOR

Decor like open glitter, confetti and sparklers at Dye House is strictly prohibited. Any decor that needs to be adhered in any way beyond string needs to be approved by the Dye House team prior to the event. All decor and signs must be removed immediately following the event.

## VENDOR DELIVERIES/ LOAD-OUT

All vendors must pack up their equipment the night of the event and remove it from the building. If same day load out is not possible, pick up times must be approved by the Dye House team. When doing a full weekend buyout, any rentals must be delivered and picked up during the duration of your stay.

## FOOD TRUCKS

Food trucks are permitted with approval by the Dye House team. In the case of approval, the client will be responsible for any applicable permits, and the Dye House team must approve the plan for service coverage.

## INSURANCE

All vendors are required to provide Certificates of Insurance (at least 1 million in general liability insurance) at least 30 days prior to your event. COIs should list Dye House as an additional insured for the event. Below is the information:

Dye House LLC  
dba Dye House  
46 Dike Street  
Providence, RI 02909

## DEPOSIT

A 50% deposit is due upfront at contract signing. The balance is due 90 days prior to the event. We accept 2 forms of payment check or credit card. All credit card payments are subject to a 1.5% cc surcharge. Payments via check should be made out to Dye House LLC and mailed to:

46 Dike Street  
Providence, RI 02909

## COVID PROTOCOL

Clients, guests and vendors are expected to adhere to state and local mandates and guidelines regarding Covid-19 related to social gatherings as well as food and beverage service.

let's get in touch.



## EVENTS INQUIRIES

[events@dyehouserri.com](mailto:events@dyehouserri.com)

46 Dike Street Providence, RI



[DyeHouseRI.com](http://DyeHouseRI.com) [@DyeHouseRI](https://www.instagram.com/DyeHouseRI)