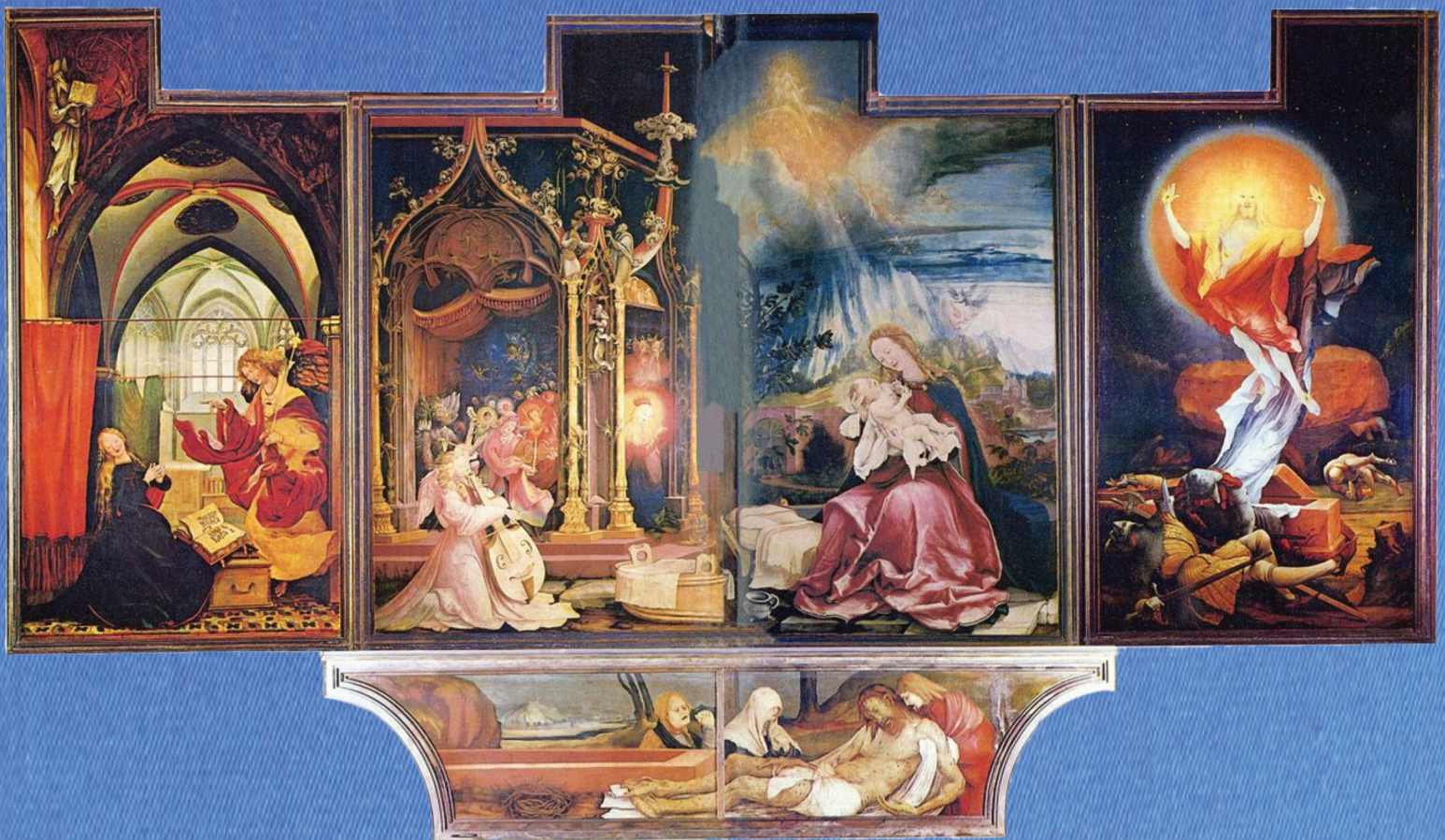


FILLMORE STUDY BIBLE

# John's Second Letter

Metaphysically Interpreted



FILLMORE BIBLE SOCIETY





Fillmore Study Bible

# John's Second Letter

Metaphysically Interpreted

Fillmore Bible Society

<https://fillmore.bible>

# Fillmore Study Bible

## John's Second Letter

Metaphysically Interpreted

Copyright 2022. Fillmore Bible Society. All rights reserved.



The Fillmore Study Bible is licensed under a Creative Commons Attribution-NonCommercial-NoDerivatives 4.0 International (CC BY-NC-ND 4.0) License, except where otherwise noted. You are free to download the work and share it with others as long as you follow the license terms: <https://creativecommons.org/licenses/by-nc-nd/4.0/legalcode>

Front cover image: Second state of the Isenheim Altarpiece, Colmar, Unterlinden Museum. Public Domain.

Back cover image: Wood sculpture, Unity of Shreveport.

Prepublication Edition #2 released November 2022

TruthUnity Ministries  
PO Box 15  
Timonium, Maryland 21094

<https://www.truthunity.net/web/john-2>



# The Fillmore Bible Society

The Fillmore Bible Society are collaborators who comb through dozens of metaphysical books written by Charles Fillmore and his students as well as over 70 years of Fillmore articles and sermons for metaphysical insights into the Bible. They edit and submit these insights as short annotations which are then applied to the text of the text of the World English Bible, a contemporary-language update of the American Standard Version of the Bible, both online and in print.

This collaboration project is managed by TruthUnity Ministries, which is the publisher of The Fillmore Study Bible. In time the Fillmore Bible Society will become free-standing with its own board, Editorial staff and peer-review committee.

Members of the Fillmore Bible Society include:



Rev. Dan Beckett. Mark, Colossians.



Mary Salama. Matthew, Corinthians 2, Thessalonians 1 & 2, Timothy 1 & 2, Titus, Peter 1 & 2, Jude.



Rev. Lisa Herklotz and Rev Jim Ernstsens. Revelation to John.



Thomas Scheinler. Acts, Galatians.



Rev. Mark Hicks. General Editor. John, Acts, Romans, Corinthians 1.



Susan St John. Hebrews.



Eddie Rodriguez. Obadiah, Jonah.



Rev. Michelle Vargas. Luke.

## The Fillmore Study Bible

The Fillmore Study Bible provides the reader with an introduction to metaphysical Bible interpretation by offering annotations and commentary from the works of Charles Fillmore and his students. Many Bible students learn their theology by reading the annotations and commentary of study Bibles. Study Bibles have a theological point of view, typically Catholic, Evangelical or Mainline Protestant. The Fillmore Study Bible makes this method of study available to the Metaphysical Christian.

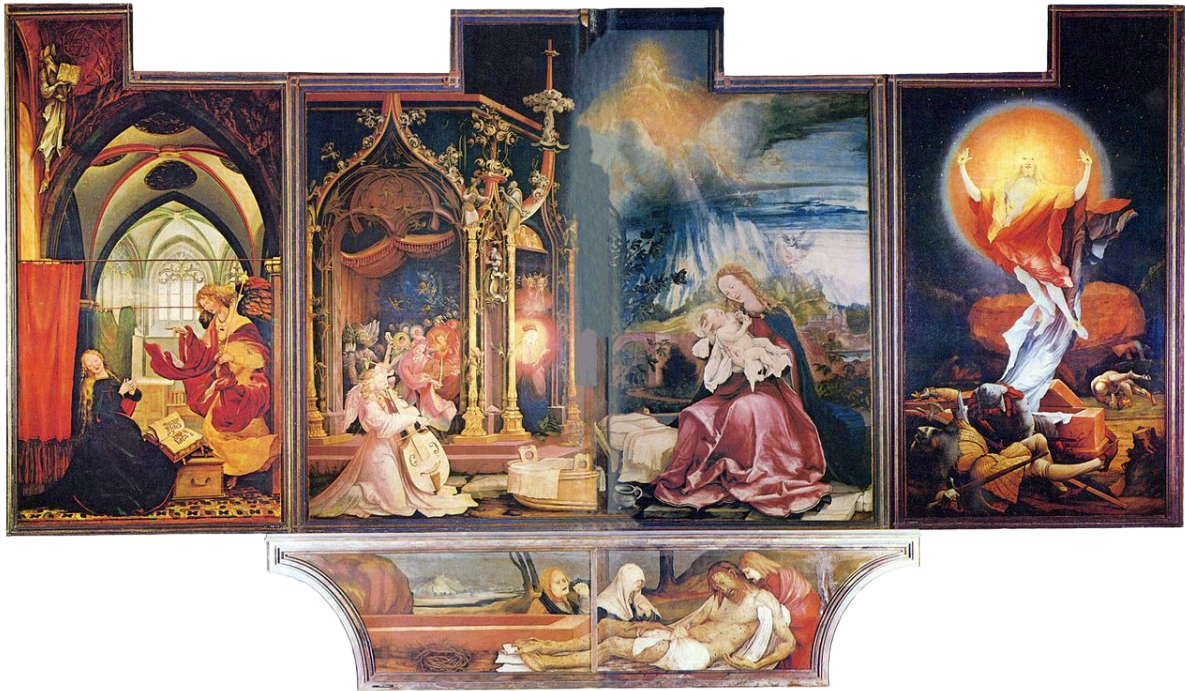
Metaphysical Christianity is an authentic and distinct expression of the historic Christian faith that acknowledges and embraces the influence of Platonic and Stoic Greek philosophy in the early development of Christian theology. Much of this influence has been suppressed in orthodox Bible commentaries because metaphysical interpretation relies on an inner knowingness as authority for spiritual matters. The annotations included here embrace inner knowingness as authority.

This study bible uses the *World English Bible* translation, which is a contemporary-language update of the bible used by Charles Fillmore, the American Standard Version. The language of the WEB is not American nor British, but *contemporary, world* English, making the text pleasant to read for the broadest possible audience of global English speakers.

The WEB differs from several contemporary-language translations by not adopting gender neutral language but it has provided footnotes when gender neutral language would be appropriate.

We believe that our present day culture of information, science and technology is ready to restore to it's spiritual teachings the perspectives of original thinkers who gave us not only mathematics, ethics, democracy and medicine, but also deep insights into the inner world of soul and Divine mind—the Greek metaphysicians. We also believe that contemporary Christianity needs a contemporary, global interpretation applied to a contemporary, global biblical text. The Fillmore Study Bible is our offering for addressing these spiritual needs.

## JOHN'S SECOND LETTER



Second state of the Isenheim Altarpiece, Colmar, Unterlinden Museum. Public Domain.

## INTRODUCTION TO JOHN'S SECOND LETTER


See the Introduction to John's First Letter by Dr. Hunt for an overview of The Three Letters of John and The Letter of Jude.

In the opening verse, the term *elder* has reference to the writer of this Epistle (the Apostle John), who was then presiding elder, or bishop, of the Christian church at Ephesus, with Jurisdiction over other Christian groups in that area. The phrase "to the elect lady and her children" clearly refers to a Christian church—probably at Pergamum—with the converts designated as the "children." The closing verse, "The children of your elect sister greet you," is easily recognized as a reference to the church at Ephesus.

This short letter was written to warn the Christian converts against the false prophets and their erroneous doctrines, and follows a similar line of thought to that of the First Epistle, only in abbreviated form. While this message is quite brief, it is also very emphatic. Note how the writer urges the converts to keep clear of these erroneous doctrines. He says: "Look to yourselves, that you may not lose what you have worked for . . . Any one who goes ahead and does not abide in the doctrine of Christ does not have God" (verses 8-9). It would appear that John was planning to make a visit to this church in the near future, and he felt that a "face to face" explanation of the dangers involved would be more effective.



Apparently, some other matters also needed straightening out, “so that our joy may be complete.”

 Introduction to *John's Second Letter* by Herbert J. Hunt, former Dean of Bible Studies for the Unity School of Christianity.

## SECOND JOHN 1

### Truth and Love

<sup>1:1</sup> The elder, to the chosen lady and her children, whom I love in truth;<sup>1</sup> and not I only, but also all those who know the truth;<sup>1:2</sup> for the truth's sake, which remains in us, and it will be with us forever:<sup>1:3</sup> Grace, mercy, and peace<sup>2</sup> will be with us, from God the Father, and from the Lord Jesus Christ, the Son of the Father, in truth and love.

1. *Love in truth.* The love of the Christ is an affirmative force that leads us to think unselfishly of others and to see the Christ in them. Spiritual love enables us to disregard the personal self and act

from the high level of principle instead of the low level of personality.

2. *Grace, mercy, and peace.* Grace is good will; favor; disposition to show mercy (RW/grace). Jesus taught a new understanding of divine law. He acknowledged mechanical cause and effect, but he knew it was possible to “fulfill the law” by transcending its strictly mechanical repetition. This can be done only by certain changes of consciousness. One of these changes is to let go of the insistence of “even-exchanges” in life all the time. Another change is to be willing to forgive sin instead of insisting on punishment for sin. Grace is the name given to the aspect of divine law which does not deal in “even-exchanging,” but in the increase of good through greater giving. Ed Rabel - Metaphysics 1, The Divine Paradox, Law/Grace.

### Perfect spiritual man is made manifest in the flesh

<sup>1:4</sup> I rejoice greatly that I have found some of your children walking in truth,<sup>1</sup> even as we have been commanded by the Father.<sup>1:5</sup> Now I beg you, dear lady, not as though I wrote to you a new commandment, but that which we had from the beginning, that we love one another.<sup>1:6</sup> This is love, that we should walk according to his commandments. This is the commandment, even as you heard from the beginning, that you should walk in it.

<sup>1:7</sup> For many deceivers have gone out into the world, those who don't confess that Jesus Christ came in the flesh. This is the deceiver and the Antichrist.<sup>2</sup> <sup>1:8</sup> Watch yourselves, that we don't lose the things which we have accomplished, but that we receive a full reward.<sup>1:9</sup> Whoever transgresses and doesn't remain in the teaching of Christ, doesn't have God. He who

remains in the teaching, the same has both the Father and the Son.<sup>3</sup> <sup>1:10</sup> If anyone comes to you, and doesn't bring this teaching, don't receive him into your house, and don't welcome him,<sup>1:11</sup> for he who welcomes him participates in his evil works.

1. *walking in truth.* Living according to principle in thought, word, and act.

2. *the deceiver and the Antichrist.* The Christ of perfect spiritual man is made manifest in the flesh of each individual to the extent that he identifies himself through the I AM with that which is perfect and enduring. He who does not admit that “the Word is made flesh” in this fashion is himself deceived and in turn deceives others, as does the antichrist. [The issue here was those who taught docetism.]


3. *has both the Father and the Son.* He has both principle and its mode of expression, that is, mind and thought.

## Final Greetings

<sup>1:12</sup> Having many things to write to you, I don't want to do so with paper and ink, but I hope to come to you, and to speak face to face, that our joy<sup>1</sup> may be made full.  
<sup>1:13</sup> The children of your chosen sister<sup>2</sup> greet you. Amen.

1. *Joy* The happiness of God expressed through His perfect idea-human beings (RW/joy).
2. *The children of your chosen sister*. [A reference to congregants of a sister church]

---

 Fillmore Study Bible annotations compiled by Mark Hicks

## APPENDICES



**FILLMORE  
STUDY  
BIBLE**

# **John's Second Letter**

**Metaphysically Interpreted**

The Fillmore Study Bible provides the reader with an introduction to metaphysical Bible interpretation by offering annotations and commentary from the works of Charles Fillmore and other metaphysical Christians that were published between 1895 and 1965.

Many Bible students learn their theology by reading the annotations and commentary of study Bibles. These study Bibles have a theological point of view, typically Catholic, Evangelical or Mainline Protestant. The Fillmore Study Bible makes this method of study available to the Metaphysical Christian.

The Fillmore Bible Society are collaborators who comb through dozens of metaphysical books written by Charles Fillmore and his students as well as over 70 years of Fillmore articles and sermons for metaphysical insights into the Bible.

Nearly all the New Testament writings are available online. Print editions of individual books, like this one, are being released as they become available. The society's focus in 2023 is publishing a complete New Testament edition and the start of selected Old Testament books. The society welcomes new collaborators in this ongoing project.



**FILLMORE BIBLE SOCIETY**  
<https://fillmore.bible>