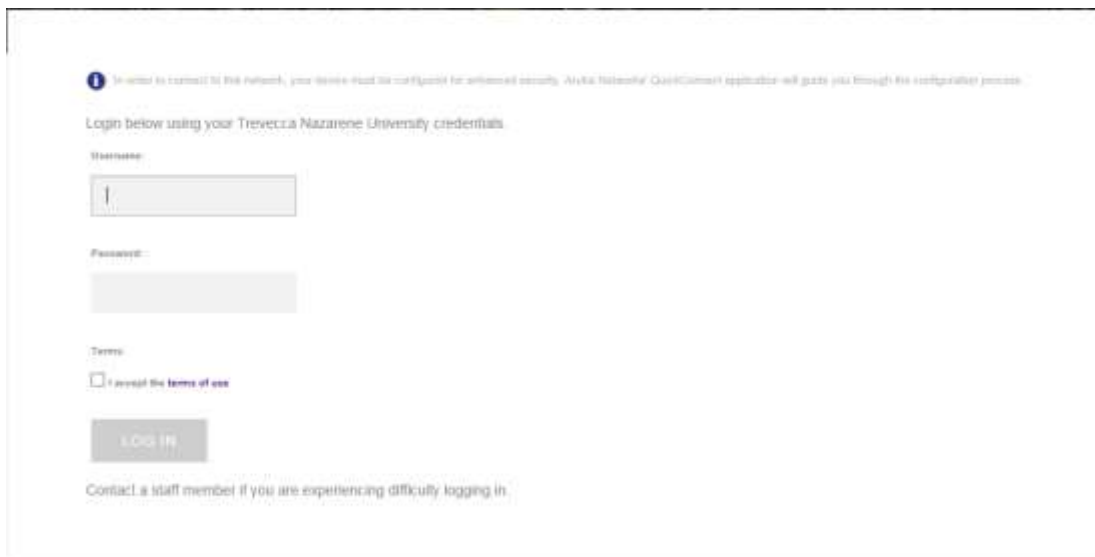


Trevecca-Wifi / Windows 7 Instructions


1. Connect to Trevecca-Wifi-Setup wireless connection.
2. Open an Internet Explorer and go to a website. You will see a page as below.



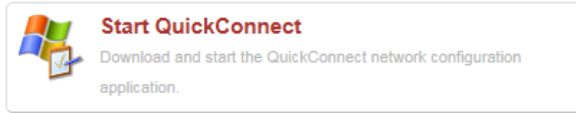
3. Click on the button below where it says “TNU Windows Devices Only Click Here:”
4. Once you click that button, it will take you to a page that looks like the picture below.



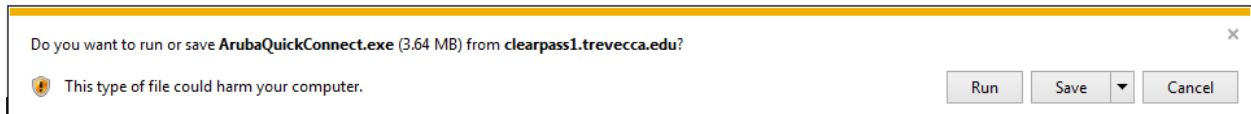
5. Once you enter your username and password and check to accept the terms of use, it will redirect to a page like the picture below.

 In order to connect to this network, your device must be configured for enhanced security. This wizard will guide you through the configuration process.

To apply the network profile, you need to download and start the QuickConnect application.



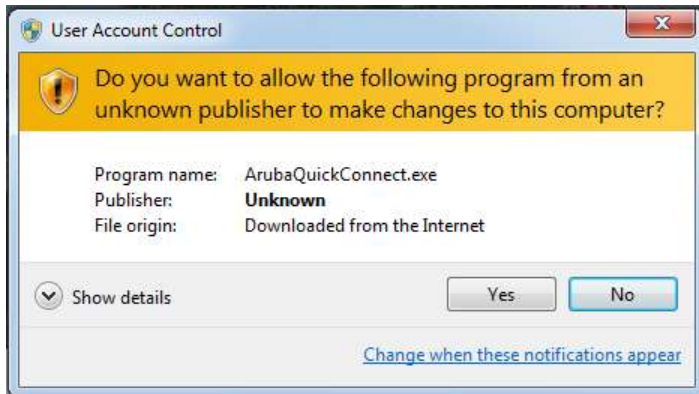
6. Click the Start QuickConnect button and it should bring up a box at the bottom of the browser window to Run or Save. Click Run.



7. The next box that comes up asks you if you are sure. Click Run again.



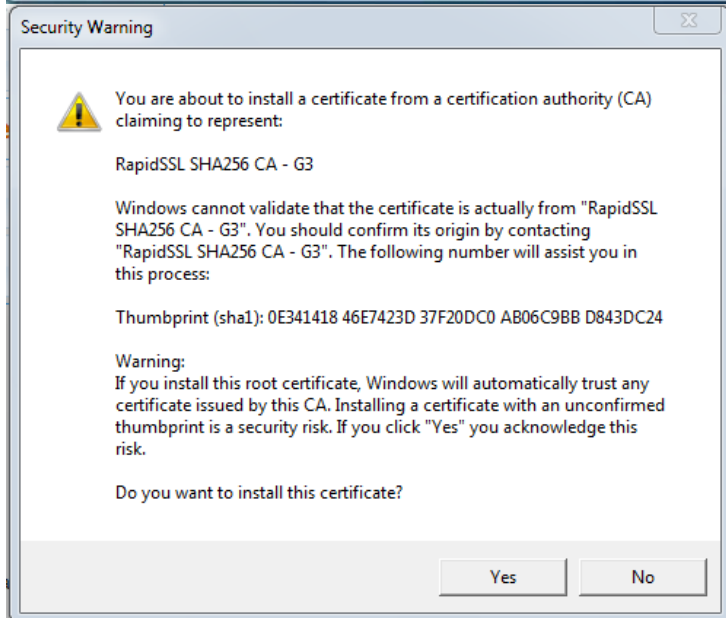
8. After you click Run, you might see the Windows Security box below pop up on your screen. Click Yes to continue.



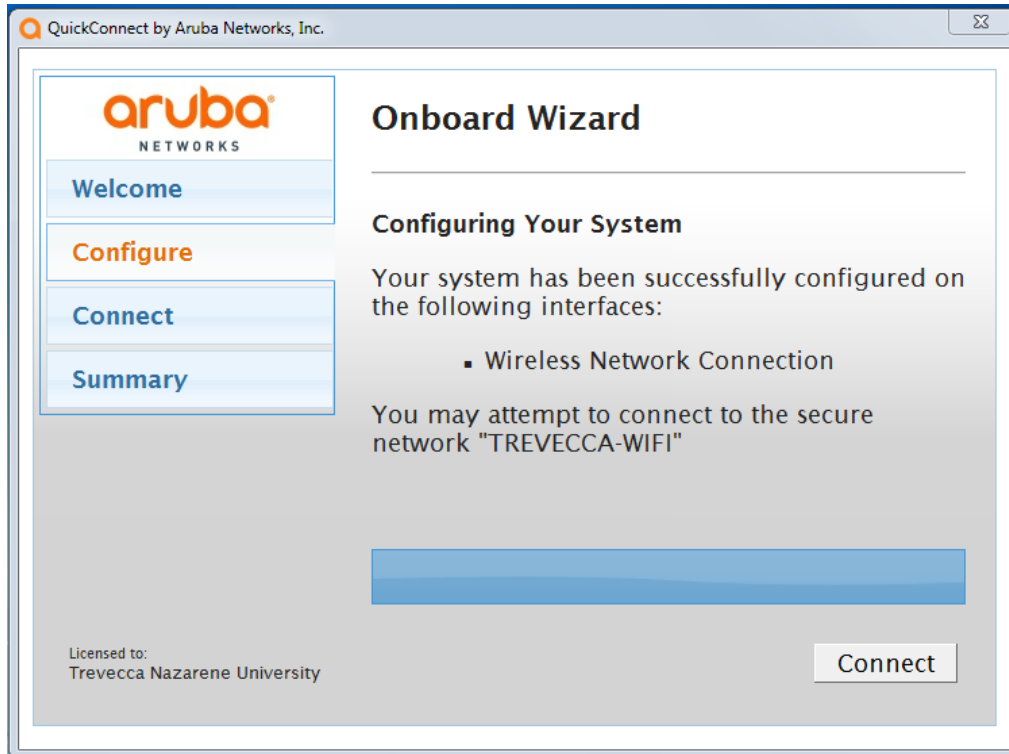
9. Now you will see the Aruba Networks application open up for the installation. Click Next.



10. The next window asks you to accept and install the certificate



11. This window shows that you have connected successfully and will need to click the connect button to continue.



12. After clicking connect, you should be completely connected to Trevecca-Wifi now.



✓ Device provisioning complete.