



TRANSWESTERN

REAL ESTATE
SERVICES

UNIVERSITY VILLAGE

MINNEAPOLIS | OFFICE SPACE FOR LEASE

BRYAN BELTRAND CCIM | 612.359.1616
bryan.beltrand@transwestern.com

PROPERTY OVERVIEW

University Village



PROPERTY DETAILS

Address:	2501-2619 SE University Ave Minneapolis, MN 55414
Building Size:	23,447 sf
# of Floors:	3
Year Built:	1999
Parking:	90 surface spaces



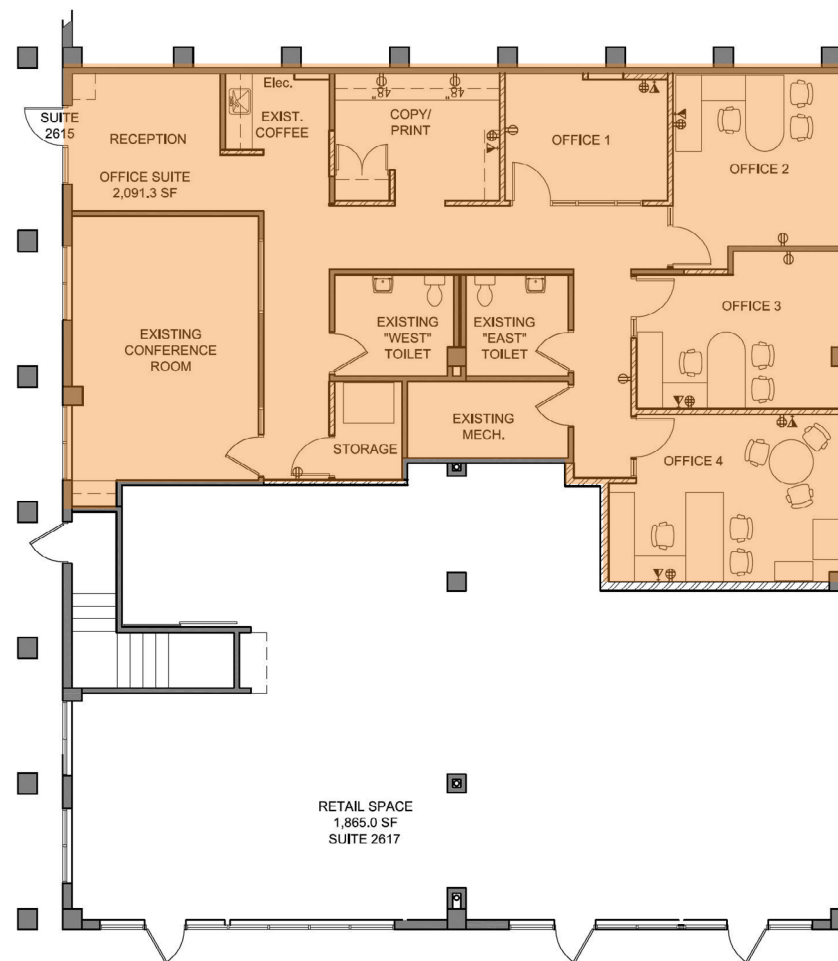
FOR LEASE

Suite 2615:	2,091 sf
Net Rental Rates:	\$12.00 psf
2021 est. Ops & Taxes:	\$9.21 psf



HIGHLIGHTS

- Located on Bus Line
- Signage available
- Signalized intersection



LEASING INFORMATION:

Bryan Beltrand | 612.359.1616 | bryan.beltrand@transwestern.com

The information provided herein was obtained from sources believed reliable; however, Transwestern makes no guarantees, warranties or representations as to the completeness of accuracy thereof. The presentation of this property is submitted subject to errors, omissions, change of price or conditions, prior to sale or lease, or withdrawal without notice. Copyright © 2020 Transwestern.