

LOVETT

INDUSTRIAL

22,598 SF

FOR LEASE | CLASS A
PRIME END-CAP SPACE

CLAYMOORE

BUSINESS PARK

CLAYMOORE

BUSINESS PARK

22,598 SF WITH 2,742 SF OF OFFICE
3550 BRITTMOORE RD | SUITE 100 | HOUSTON, TX 77043

THE GALLERIA



KATY FREEWAY

MEMORIAL CITY

BELTWAY
8

W. SAM HOUSTON PKWY N.

10801 MOSS RIDGE RD

3550 BRITTMOORE RD

3700 CLAYMOORE PARK DR

3900 CLAYMOORE PARK DR

11555 CLAY RD

11711 CLAY RD

22,598 SF AVAILABLE

3600 BRITTMOORE RD

3800 BRITTMOORE RD

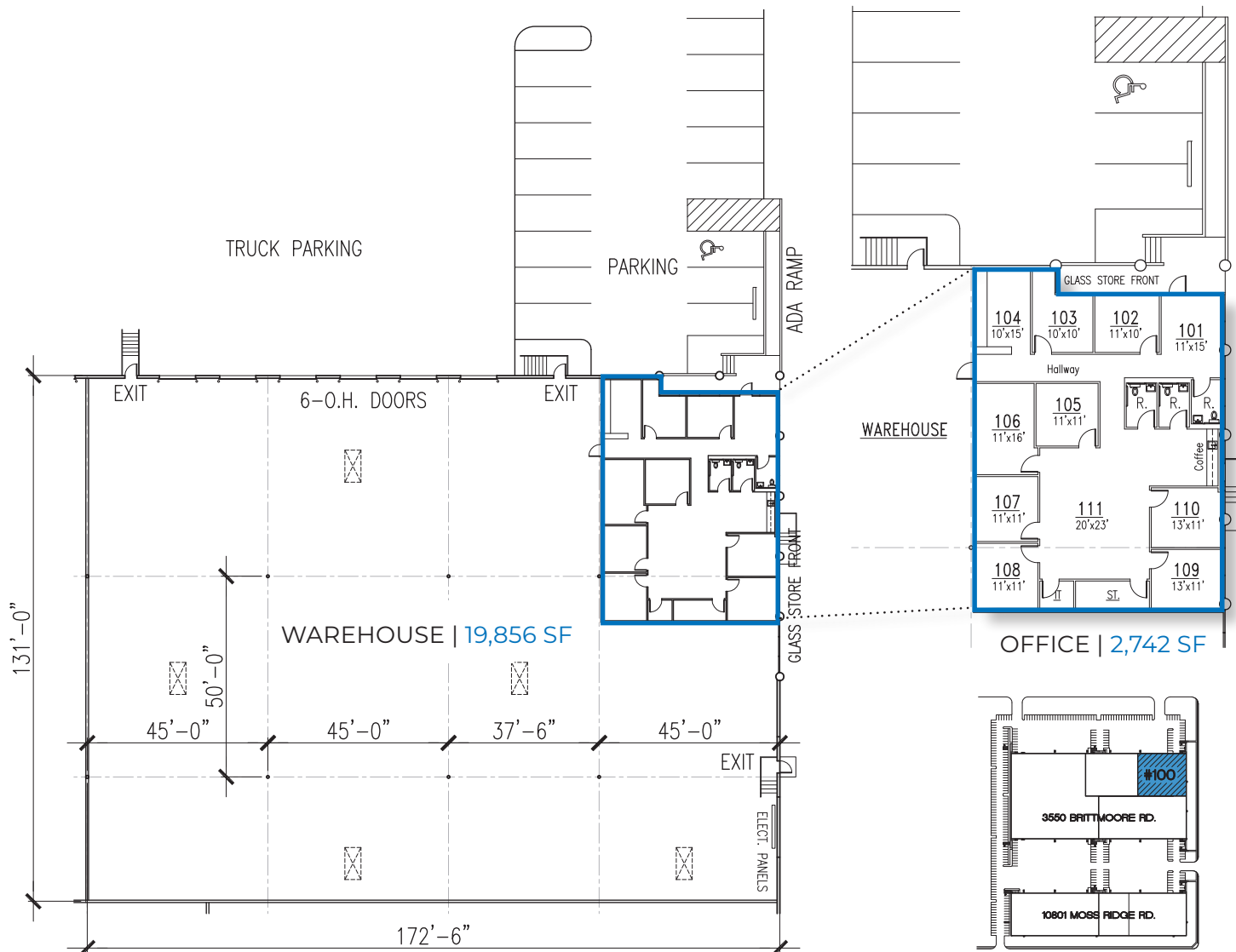
CLAYMOORE PARKWAY DR

CLAY ROAD

BRITTMOORE ROAD

AERIAL MAP

- Master-planned park with excellent accessibility
- Strategically located on Brittmoore Rd. just off Clay Rd. and Beltway 8
- Outstanding corporate identity
- Irreplaceable infill location



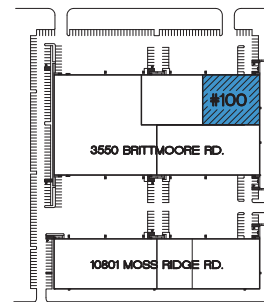
LOVETT

INDUSTRIAL

SITE PLAN

SPACE FEATURES:

- 22,598 SF Total
- 2,742 SF Office
- 19,856 SF Warehouse
- Six (6) dock high loading doors
- 24' Clear height
- End-cap suite
- All concrete paving
- Professionally maintained landscaping
- Front load / Dock high
- ESFR sprinklered
- Abundant car parks



LOCAL AMENITIES

RESTAURANTS

- 1 Pappas BBQ
- 2 Pappadeaux Seafood
- 3 James Coney Island
- 4 Rudy's Bar-BQ
- 5 Taco Cabana
- 6 McDonald's
- 7 Starbucks
- 8 Chick-Fil-A
- 9 Niko Niko'shen
- 10 Kirby Ice House

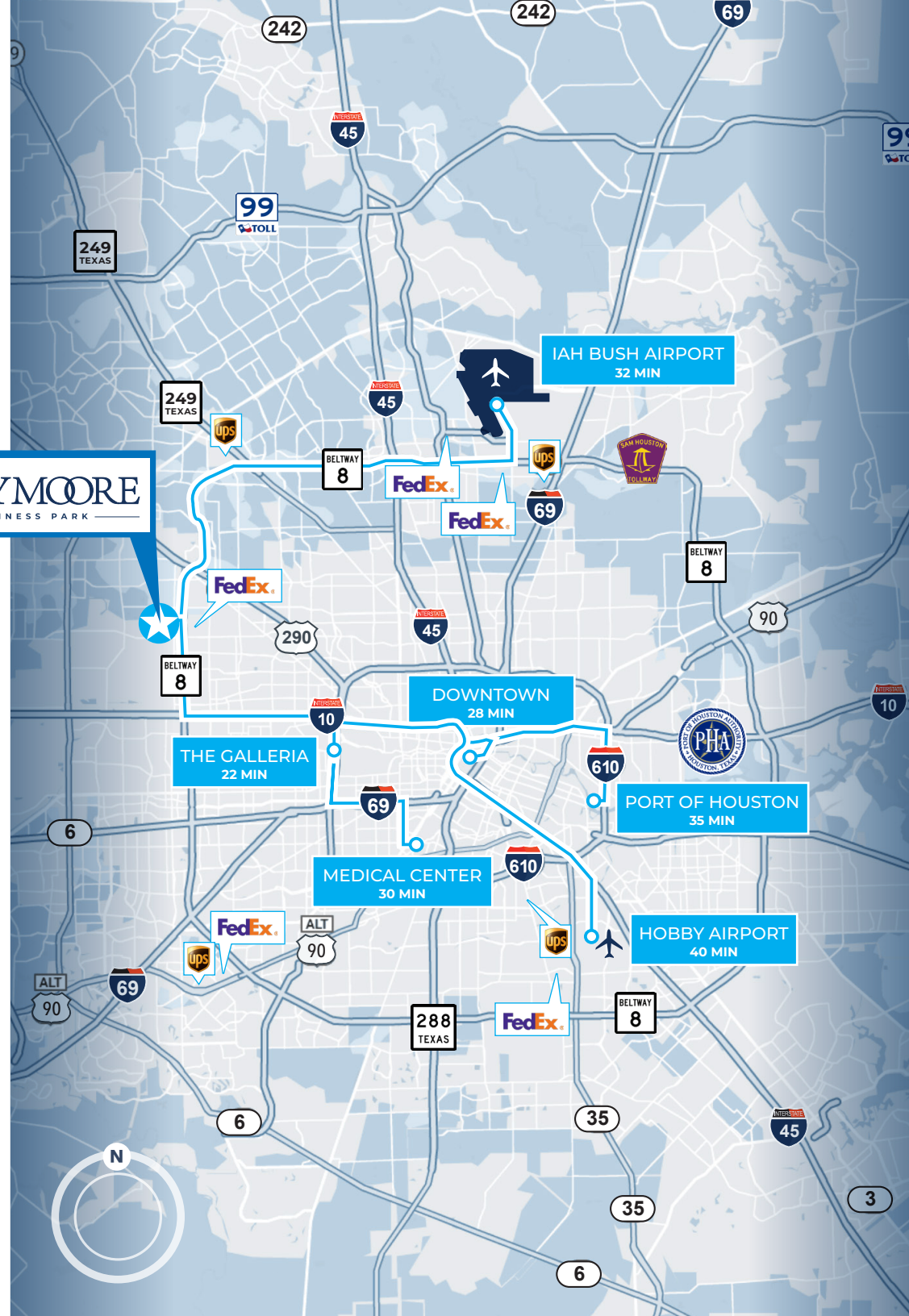
HOTELS

- 11 Residence Inn by Marriott
- 12 Four Points by Sheraton
- 13 Comfort Suites
- 14 Staybridge Suites
- 15 The Westin Houston

SERVICES/RETAIL

- 16 Clay Road YMCA
- 17 Memorial City Mall
- 18 Life Time Fitness
- 19 CITYCENTRE
- 20 Town & Country Village
- 21 FedEx

CLAYMOORE
BUSINESS PARK



LOVETT

INDUSTRIAL



TRANSWESTERN
LEASING INFORMATION:

Darryl Noon
P: 713.270.3325
E: Darryl.Noon@transwestern.com

Jude Filippone
P: 713.270.3318
E: Jude.Filippone@transwestern.com

Brian Gammill
P: 713.270.3321
E: Brian.Gammill@transwestern.com

The information provided herein was obtained from sources believed reliable; however, Transwestern makes no guarantees, warranties or representations as to the completeness or accuracy thereof. The presentation of this property is submitted subject to errors, omissions, change of price or conditions, prior sale or lease, or withdrawal without notice. Copyright © 2023 Transwestern.