



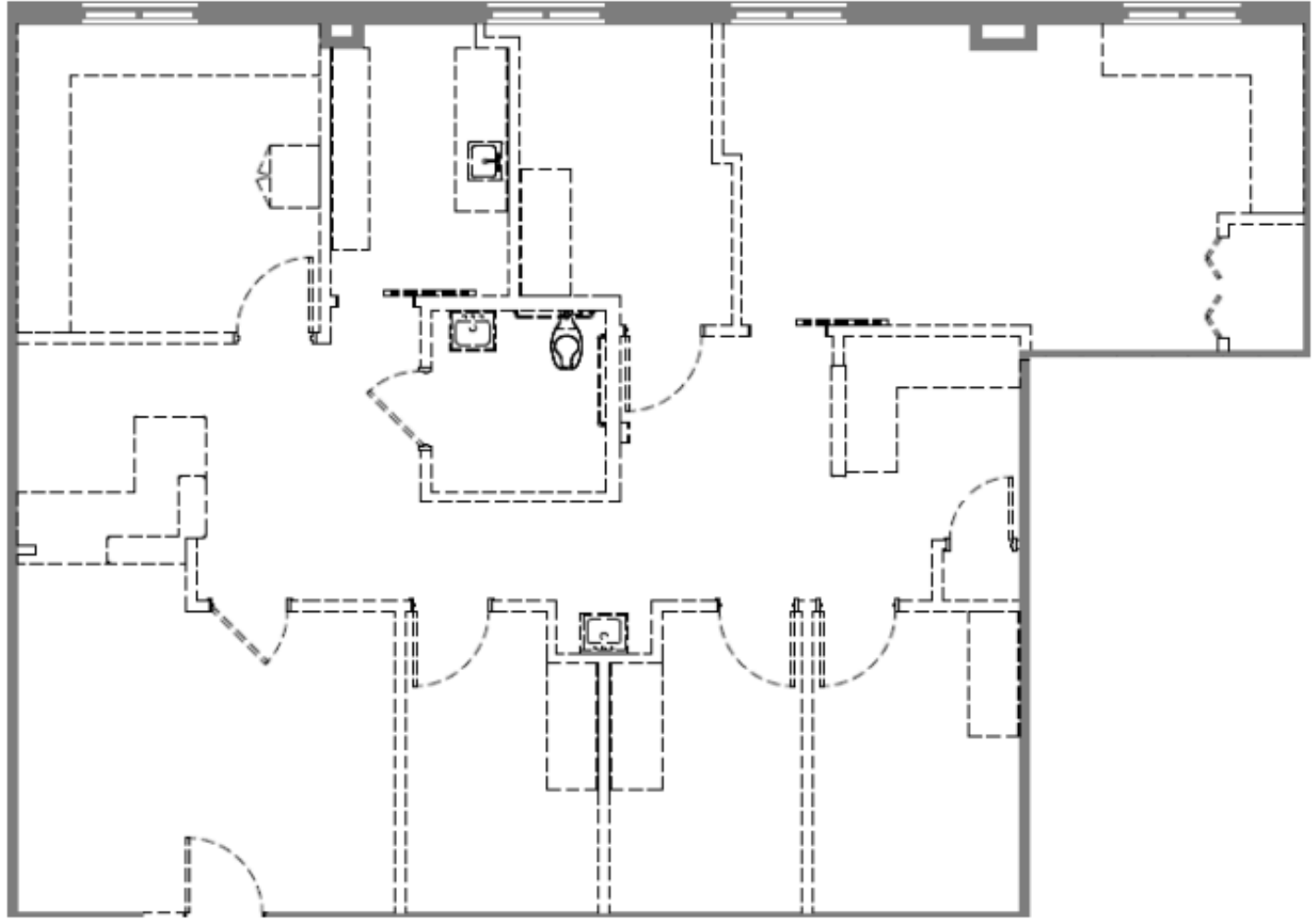
MARIETTA HEALTH PARK

780 CANTON RD NE, MARIETTA, GA 30060



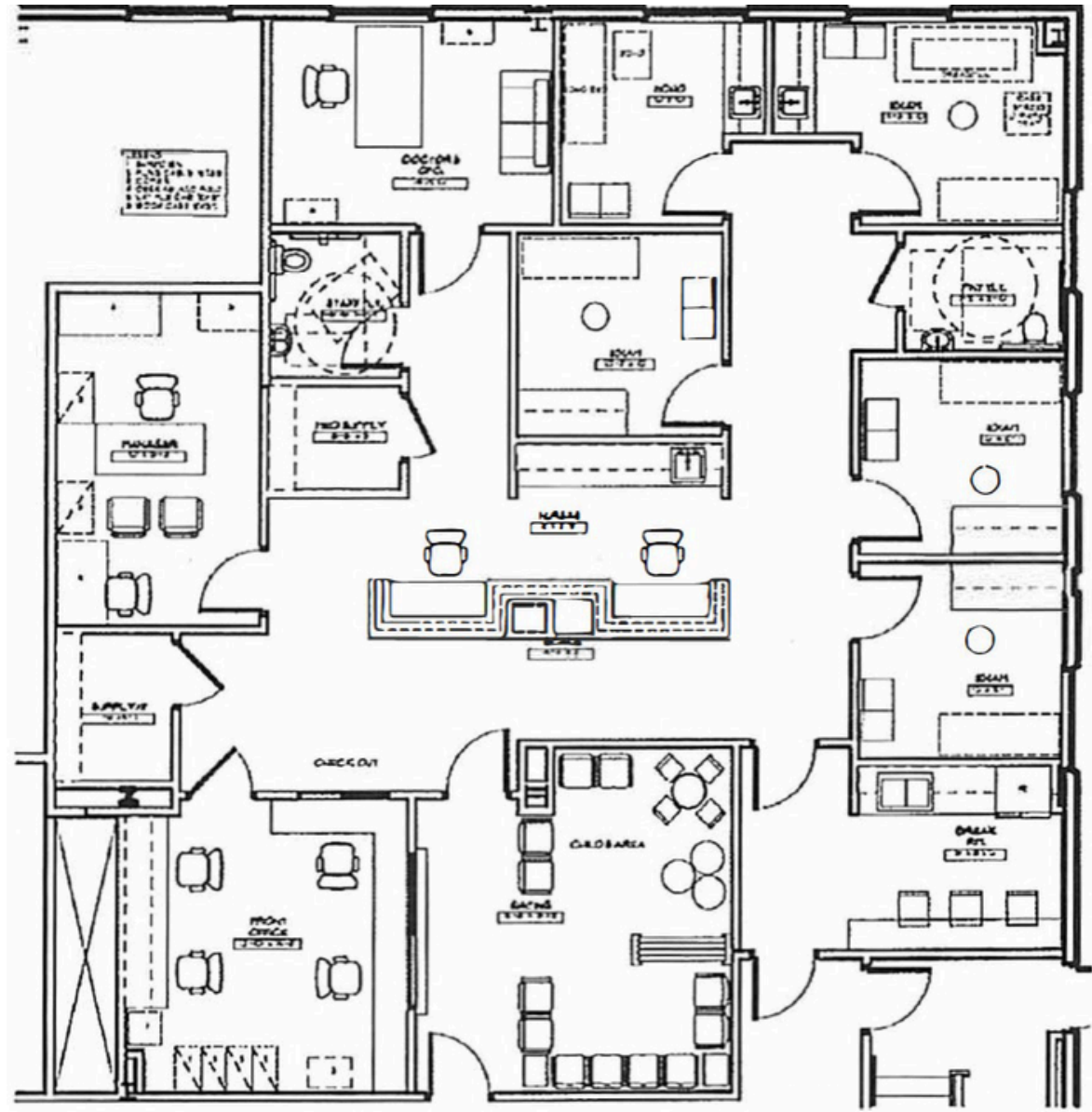
AVAILABLE FLOORPLANS

SUITE 310
1,866 RSF



SUITE 350

2,600 RSF





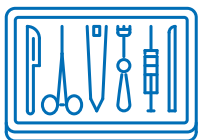
PROPERTY HIGHLIGHTS



Class A
±81,000 SF Medical Office
Building



Located by WellStar
Kennestone Hospital, with
convenient Access to I-75



Multi-Specialty Outpatient
Surgery Center On-Site



Covered drop-off / pick-
up and ample free parking



Let's do this.



TRANSWESTERN

REAL ESTATE
SERVICES



SOUTHEAST HEALTHCARE ADVISORY SERVICES

STEVE HALL

Senior Managing Director,
Healthcare Advisory Services

404.842.6560

steve.hall@transwestern.com

JOHN V. LOPEZ, CCIM, RPA

Managing Director, Healthcare
Advisory Services

404.842.6562

john.lopez@transwestern.com

BO STUART

Vice President,
Healthcare Advisory Services

404.842.6556

bo.stuart@transwestern.com

MARSH HAZLEHURST

Associate,
Healthcare Advisory Services

404.842.6574

marsh.hazlehurst@transwestern.com