



TRANSWESTERN

REAL ESTATE  
SERVICES



# 505 WATERFORD

505 N HIGHWAY 169, PLYMOUTH, MN 55441



# OFFICE SPACE FOR SUBLEASE

## Building Information

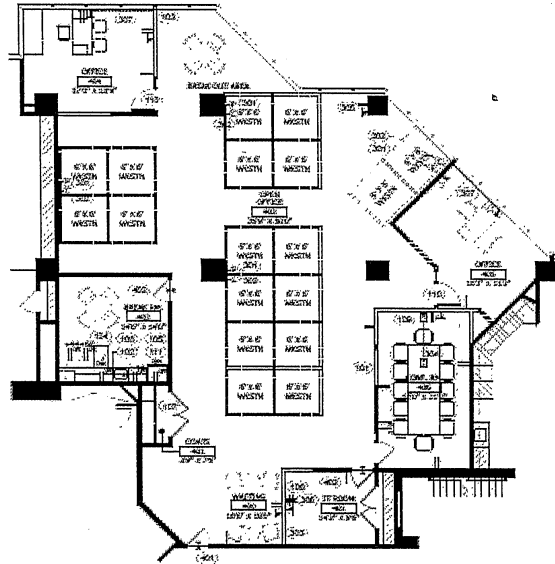
The property enjoys easy access to major highways 169 and 55, as well as Interstate 394 and 494, that connect it to all points in the Minneapolis/St. Paul metropolitan area. Nearby amenities include hotels, numerous restaurants and shopping.

## Sublease Features

- **Size:** 4,017 SF
- **Available:** Now
- **Lease Term:** Through August 31, 2023
- **Lease Rate:** Negotiable
- **Furniture:** Fully furnished
- **Parking:** 5.00/1000

## Building Features

- Class A finishes
- Outdoor seating areas
- Tenant lounge
- Full service on-site cafe
- Conference center
- Fitness center with lockers and showers



**Norma Jaeger CCIM, RPA** 612.359.1605 | [norma.jaeger@transwestern.com](mailto:norma.jaeger@transwestern.com)

The information provided herein was obtained from sources believed reliable; however, Transwestern makes no guarantees, warranties or representations as to the completeness or accuracy thereof. The presentation of this property is submitted subject to errors, omissions, change of price or conditions, prior sale or lease, or withdrawal without notice. Copyright © 2020 Transwestern.

