



TRANSWESTERN

REAL ESTATE  
SERVICES

FOR SUBLEASE

# LOFFLER BUSINESS CENTER

1101 E 78TH ST, BLOOMINGTON, MN 55420



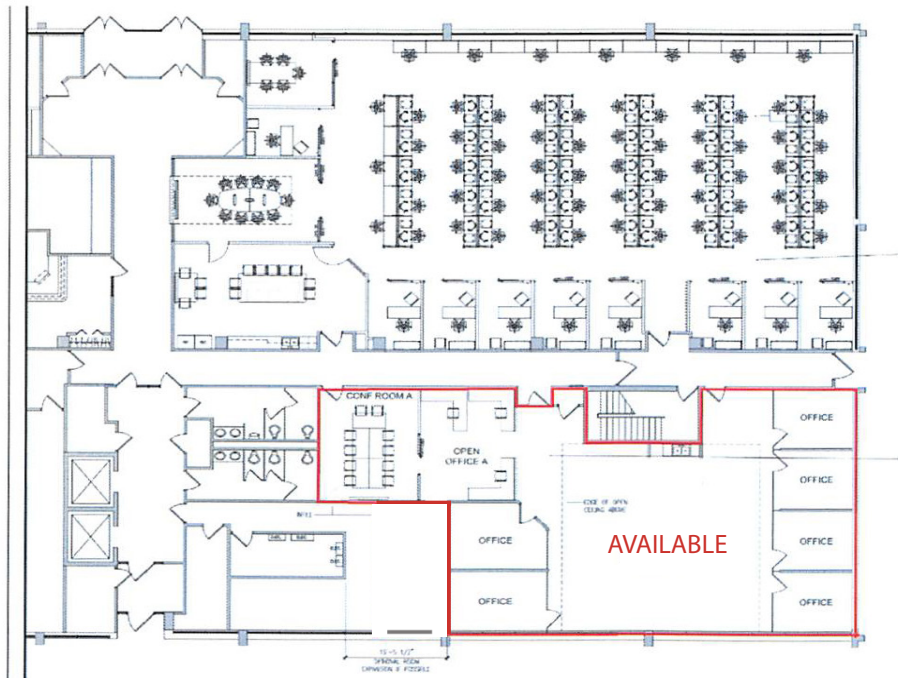
# OFFICE SPACE FOR SUBLEASE

## Building Information

Loffler Business Center is located conveniently off I-494 between I-35W and Hwy 77 in Bloomington. The building is in a major office and retail corridor, close to the Mall of America and the Minneapolis / St. Paul airport. Professional setting with nice building finishes, abundant natural light, and ample parking.

## Sublease Details

- **Available:** 1st Floor - 3,406 SF
- **Term:** Through October 2028
- **Lease Rate:** \$20.00 PSF Gross
- **Parking:** 4.0/1,000 SF
- **Layout:** Space includes conference room, 6 private offices, open work area, and coffee bar with sink



**Frank Richie** 612.359.1674 | [frank.richie@transwestern.com](mailto:frank.richie@transwestern.com)  
**Trinette Wacker** 612.263.9842 | [trinette.wacker@transwestern.com](mailto:trinette.wacker@transwestern.com)

The information provided herein was obtained from sources believed reliable; however, Transwestern makes no guarantees, warranties or representations as to the completeness or accuracy thereof. The presentation of this property is submitted subject to errors, omissions, change of price or conditions, prior sale or lease, or withdrawal without notice. Copyright © 2025 Transwestern.