

INDUSTRIAL SPACE FOR LEASE

1341 Galaxy Court

Concord, CA

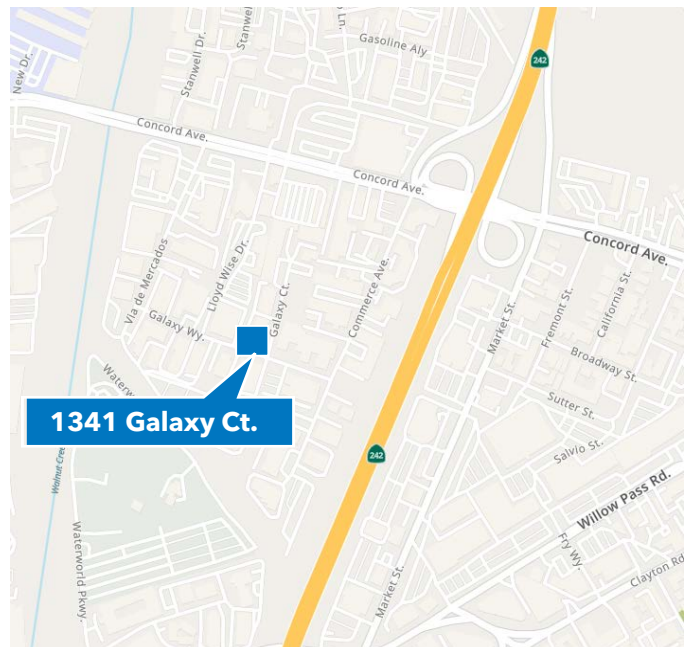


AVAILABLE SPACE

- Unit B: $\pm 5,430$ SF
- Lease rate: \$9,231 /month (\$1.70/SF) I.G.
- Approximately ± 515 SF office/180 SF restroom
 $\pm 4,700$ SF warehouse

PROPERTY HIGHLIGHTS

- Great location with excellent freeway access via SR242, exit at Concord Avenue
- (2) private offices & reception/office area
- (2) double-occupant restrooms
- Nice interior finishes in office, restrooms and warehouse
- Approximately 9'-16' min. clearance
- Insulated roof deck
- Office has air conditioning & heat
- (1) 12'w x 14'h grade level doors &
- (1) 6'w x 7'h grade door
- LED lighting in office & warehouse areas



LEASING INFORMATION

Bob Maderious
Senior Vice President
925.357.2010
bob.maderious@transwestern.com
CA DRE Lic. 00616136



2175 N. California Blvd., Suite 415
Walnut Creek, CA 94596

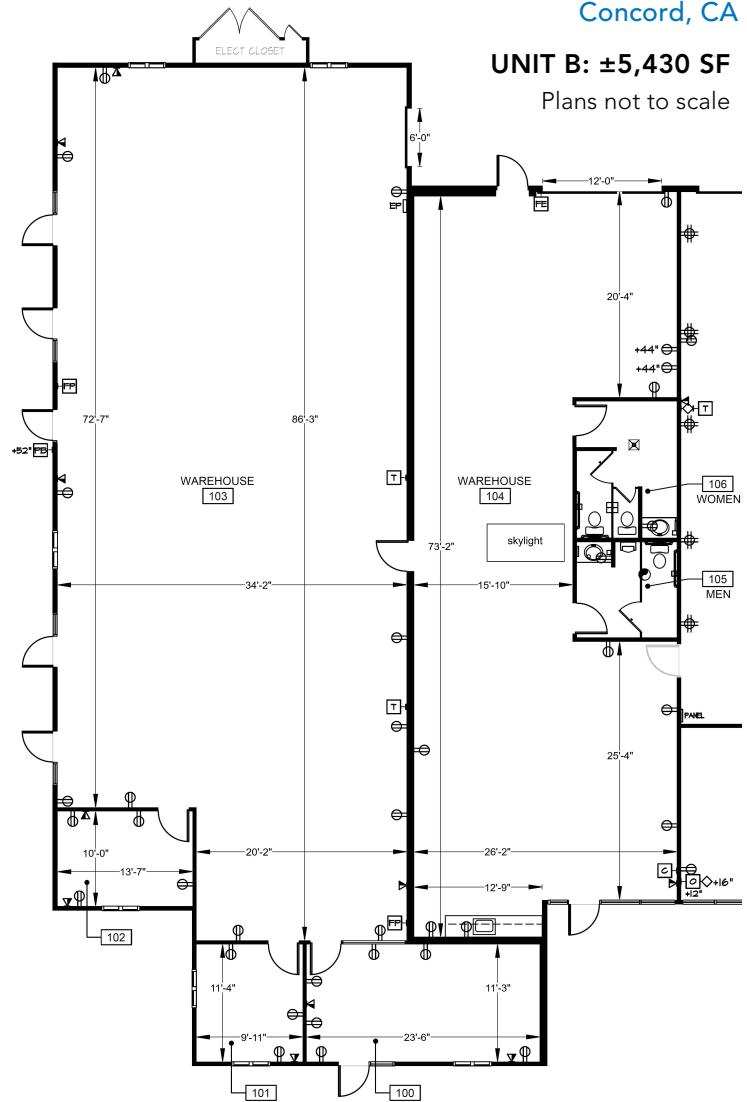
925.357.2000

CA DRE Broker Lic. 01263636
www.transwestern.com/walnutcreek

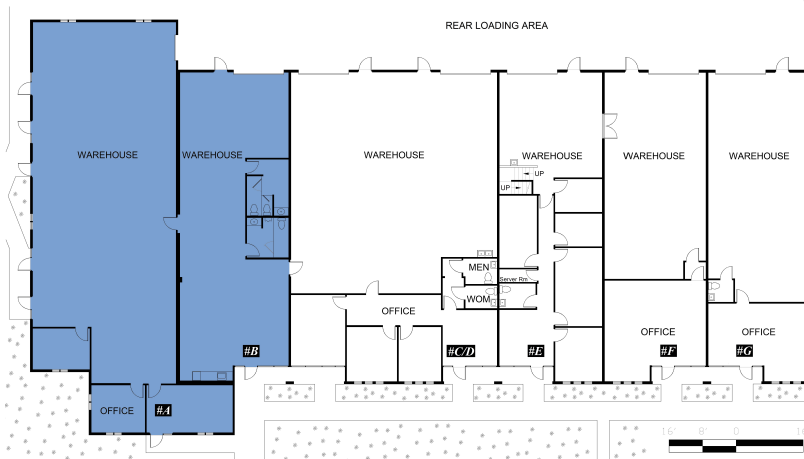
INDUSTRIAL SPACE FOR LEASE | 1341 Galaxy Way
Concord, CA

UNIT B: ±5,430 SF

Plans not to scale



FLOOR PLAN



LOCATION PLAN

LEASING INFORMATION

Bob Maderious
Senior Vice President
925.357.2010
bob.maderious@transwestern.com
CA DRE Lic. 00616136



2175 N. California Blvd., Suite 415
Walnut Creek, CA 94596

925.357.2000

CA DRE Broker Lic. 01263636
www.transwestern.com/walnutcreek