



TRANSWESTERN

REAL ESTATE
SERVICES

ESSEX BUILDING

84 SOUTH 10TH STREET, MINNEAPOLIS, MN 55403

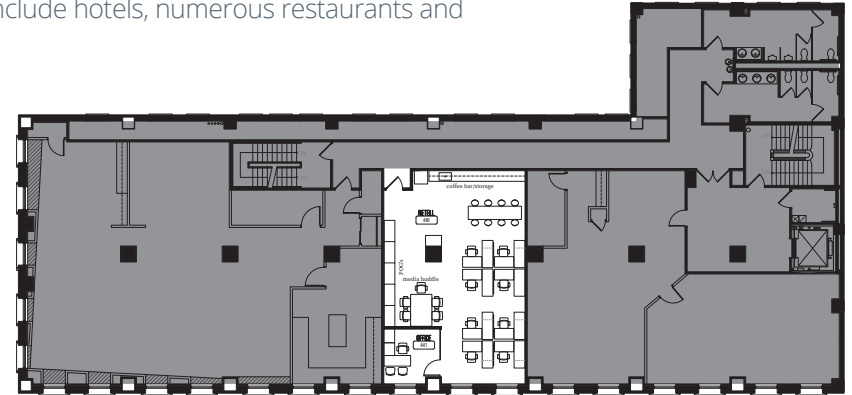
OFFICE SPACE FOR SUBLEASE

Building Information

Located on Nicollet Mall in the heart of downtown Minneapolis, the property enjoys easy access to major Interstates 94, 394, and 35W that connect it to all points in the Minneapolis/St. Paul metropolitan area. Nearby amenities include hotels, numerous restaurants and shopping.

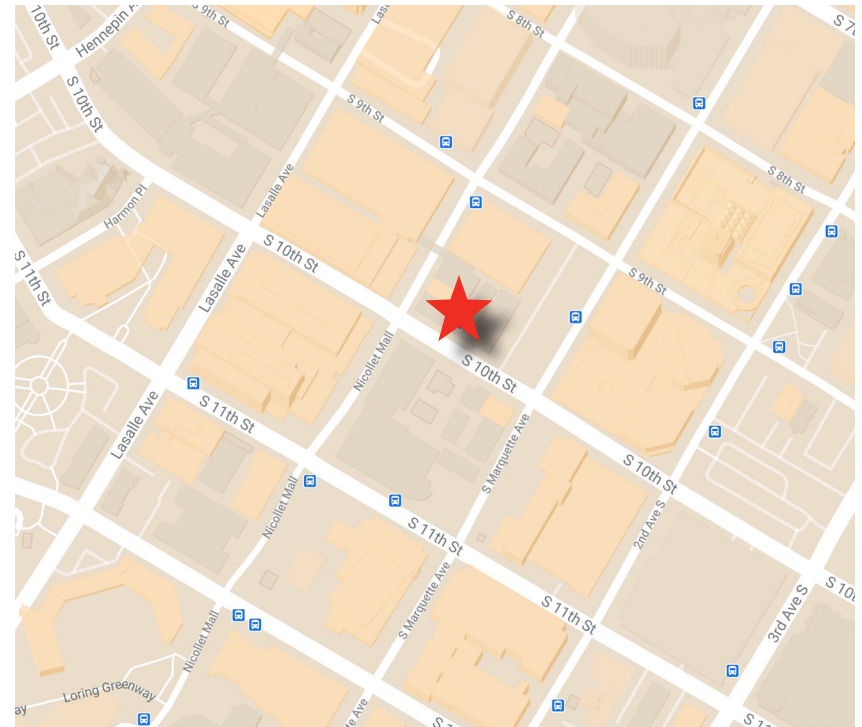
Sublease Features

- **Size:** 1,206 SF
- **Lease Term:** Through December 31, 2025
- **Lease Rate:** Negotiable
- **Furniture:** Could be available
- **Parking:** 7.00/1000



Building Features

- Directly across from Target Headquarters
- Excellent location for Target vendors
- Multiple bus lines
- 4 blocks away from light rail



Mike Salmen 612.359.1660 | mike.salmen@transwestern.com
Frank Richie 612.359.1674 | frank.richie@transwestern.com

The information provided herein was obtained from sources believed reliable; however, Transwestern makes no guarantees, warranties or representations as to the completeness or accuracy thereof. The presentation of this property is submitted subject to errors, omissions, change of price or conditions, prior sale or lease, or withdrawal without notice. Copyright © 2020 Transwestern.