

153,145 SF
Expandable to
217,514 SF

**AVAILABLE
FOR LEASE**

**NORTHWEST
SUBMARKET**

PROJECT OF
**ST PAUL
TRAVELERS**

TRANSWESTERN
REAL ESTATE
SERVICES

SAM HOUSTON CENTER

10000 West Sam Houston Parkway North, Houston, TX 77064



Availability:

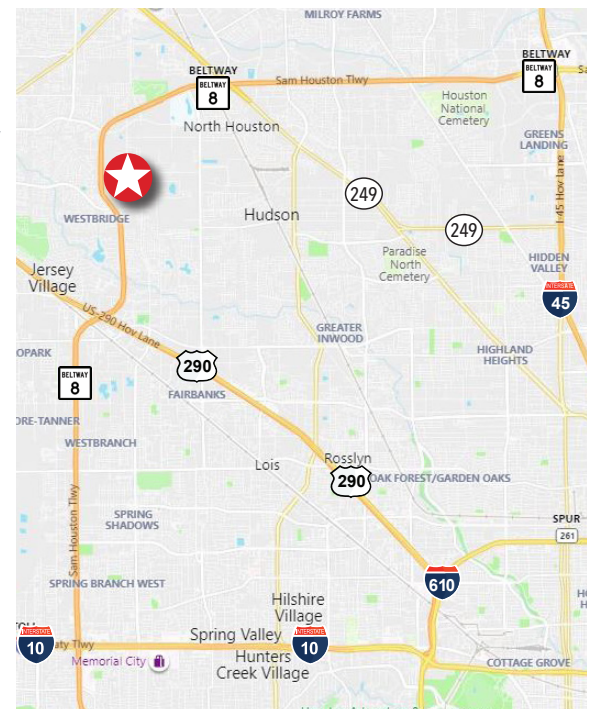
- 1st Floor Office: 11,163 SF
- 2nd Floor Office: 10,495 SF
- Warehouse Office: 1,480 SF
- Control Room: 162 SF
- Total Office: 23,300 SF
- Warehouse: 129,845 SF
- Expandable: 64,369 SF with BTS Office

Expandable Building Features:

- 44'x47' Bays
- 50' Speed bay
- ESFR sprinkler
- Corner space with abundant storefront glass
- 32' Clear height
- Dock-high, Rear load
- 76 Car parks

Existing Building Features:

- Outstanding visibility and corporate identity
- Excellent access to Sam Houston Pkwy
- Freestanding building
- Fully fenced truck apron
- 40'x44" Bays
- 50' Speed bay
- Dock-high, Side load
- 24' Clear height
- 21 Truck doors
- One (1) drive-up ramp
- ESFR sprinkler
- 270' Building depth
- 156 Car parks
- 127' Truck apron
- 6 Pit levelers
- 15 Edge of dock levelers
- 1200 amp service



Leasing Information:

Darryl Noon
713.270.3325
darryl.noon@transwestern.com

Brian Gammill
713.270.3321
brian.gammill@transwestern.com

The information provided herein was obtained from sources believed reliable; however, Transwestern makes no guarantees, warranties or representations as to the completeness of accuracy thereof. The presentation of this property is submitted subject to errors, omissions, change of price or conditions, prior to sale or lease, or withdrawal without notice. Copyright © 2021 Transwestern.

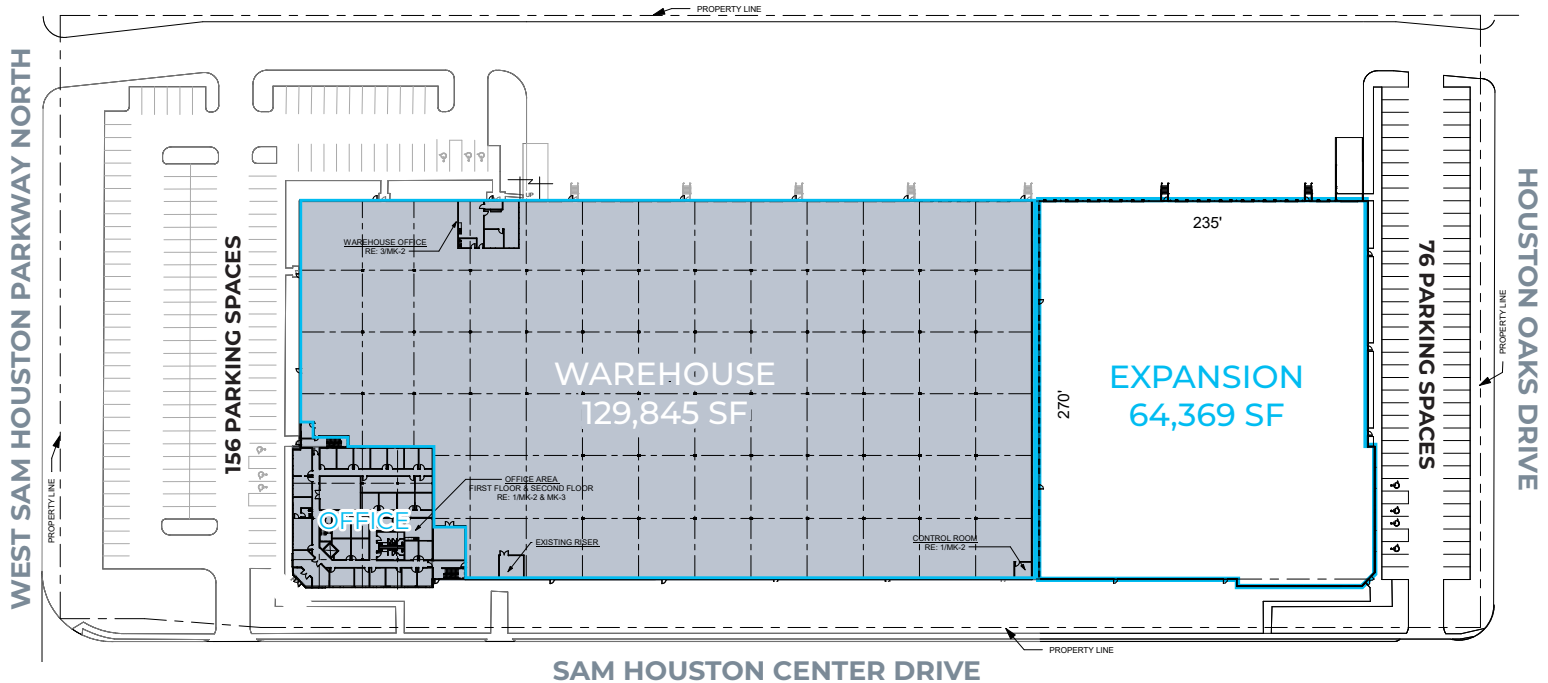
SAM HOUSTON CENTER

10000 West Sam Houston Parkway North, Houston, TX 77064



TRANSWESTERN

REAL ESTATE
SERVICES



Leasing Information:

Darryl Noon

713.270.3325

darryl.noon@transwestern.com

Brian Gammill

713.270.3321

brian.gammill@transwestern.com

The information provided herein was obtained from sources believed reliable; however, Transwestern makes no guarantees, warranties or representations as to the completeness of accuracy thereof. The presentation of this property is submitted subject to errors, omissions, change of price or conditions, prior to sale or lease, or withdrawal without notice. Copyright © 2021 Transwestern.

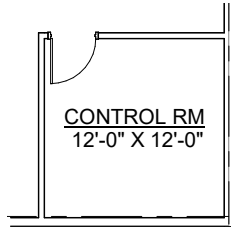
SAM HOUSTON CENTER

10000 West Sam Houston Parkway North, Houston, TX 77064

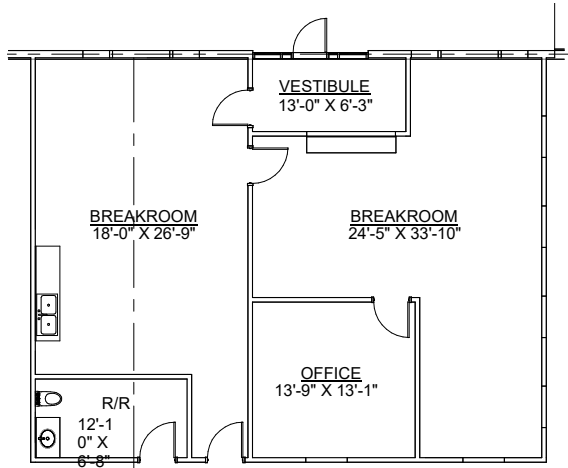


TRANSWESTERN

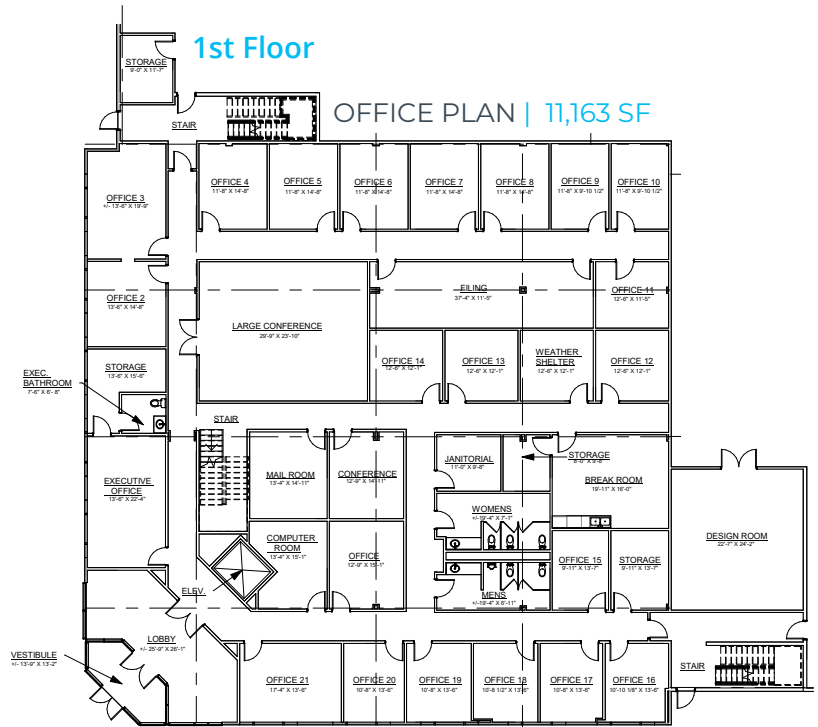
REAL ESTATE
SERVICES



CONTROL ROOM
162 SF

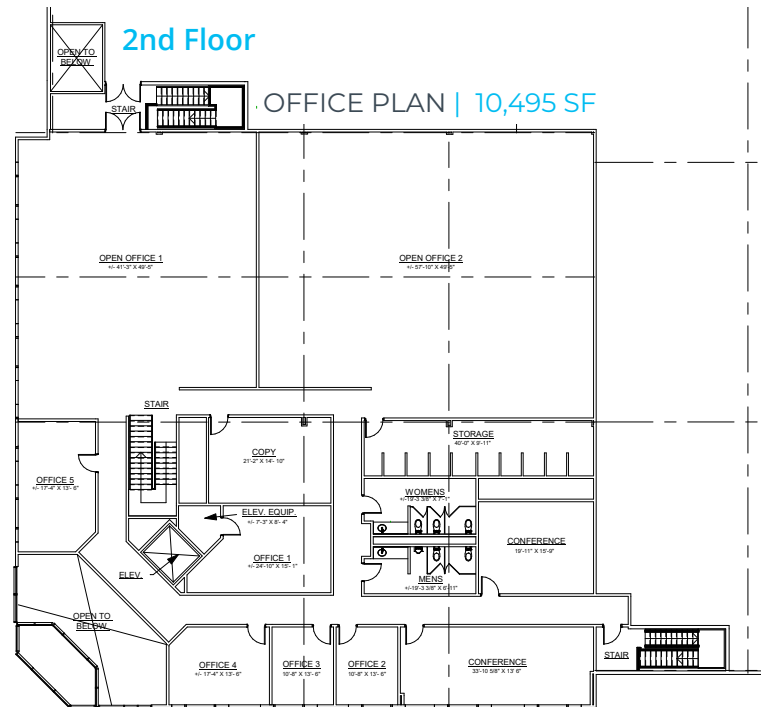


WAREHOUSE OFFICE PLAN
1ST FLOOR | 1,480 SF



1st Floor

OFFICE PLAN | 11,163 SF



2nd Floor

OFFICE PLAN | 10,495 SF

Leasing Information:

Darryl Noon

713.270.3325

darryl.noon@transwestern.com

Brian Gammill

713.270.3321

brian.gammill@transwestern.com

The information provided herein was obtained from sources believed reliable; however, Transwestern makes no guarantees, warranties or representations as to the completeness of accuracy thereof. The presentation of this property is submitted subject to errors, omissions, change of price or conditions, prior to sale or lease, or withdrawal without notice. Copyright © 2021 Transwestern.