

FOR LEASE

4800 MUSTANG CIRCLE

MOUNDS VIEW, MN 55112



BEN YOUDS

Associate
612.359.1650
ben.youds@transwestern.com

CHRIS WEIRENS

Senior Vice President | Principal
612.359.1603
chris.weirens@transwestern.com

PROPERTY INFORMATION

4800 MUSTANG CIRCLE	
Address	4800 Mustang Circle Mounds View, MN 55112
Total Building SF	11,500 SF
Available SF	5,145 SF
Clear Height	14'
Loading	2 Drive-Ins (10' x 10')
Parking	22 Spaces
HVAC	100% Climate Controlled
Lease Rates	Negotiable
Cam/Taxes (2024)	\$3.30 PSF
Zoning	I1 - Industrial
Available	Now



DRIVE TIMES

DOWNTOWN
MINNEAPOLIS
14 MINS

DOWNTOWN
ST. PAUL
14 MINS

MSP
AIRPORT
24 MINS

PRIME INDUSTRIAL SPACE FOR LEASE

14' CLEAR
HEIGHT

EASY TRUCK
ACCESS

2 DRIVE-INS
10' X 10'

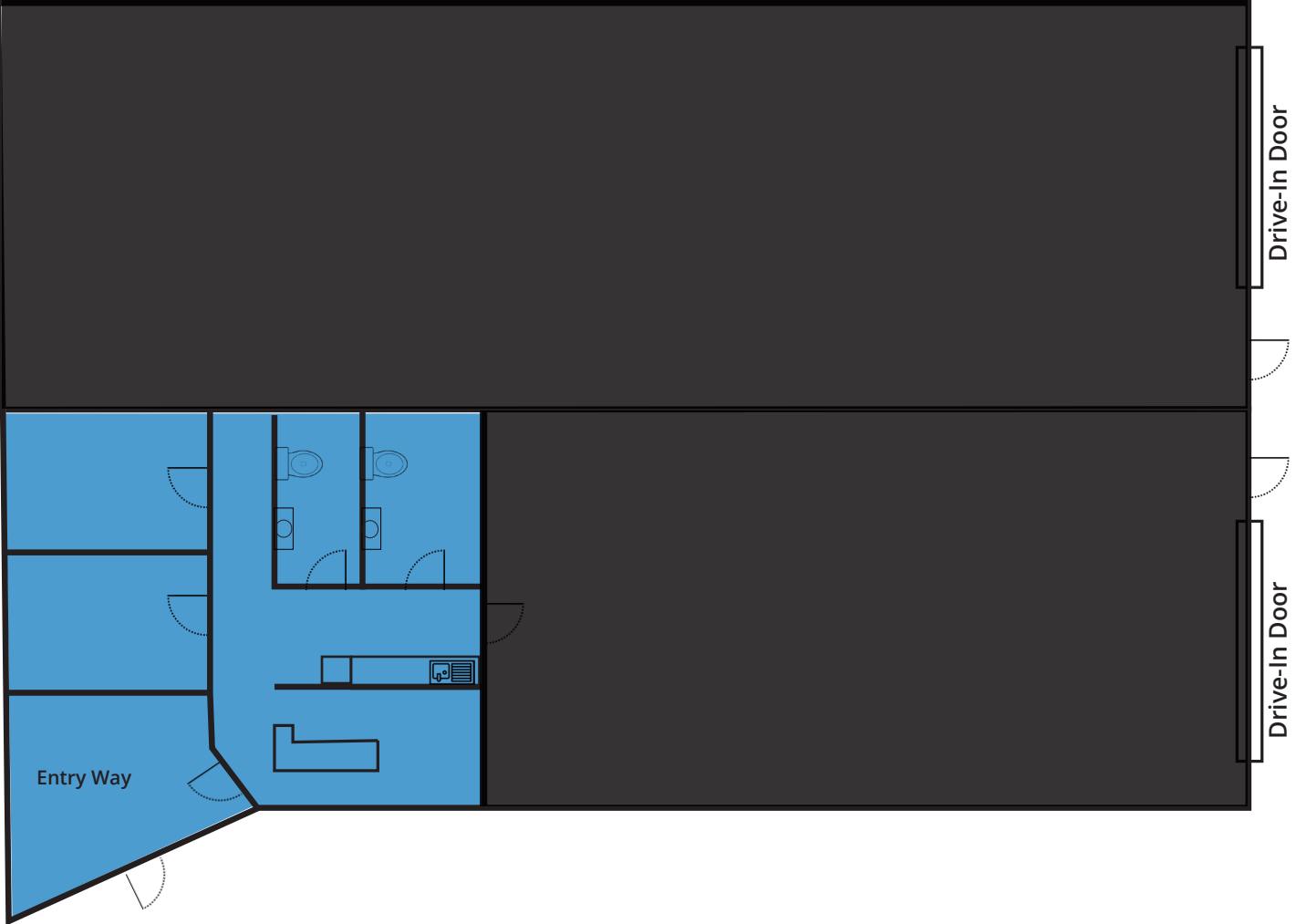
GREAT
LOCATION

FLOOR PLAN



Office
Warehouse
Total SF: 5,145
Office SF: 3,744
Warehouse SF: 1,401

ALTERNATIVE FLOOR PLAN



Office
Warehouse
Total SF: 5,145
Office SF: 1,380
Warehouse SF: 3,765

PROPERTY PHOTOS

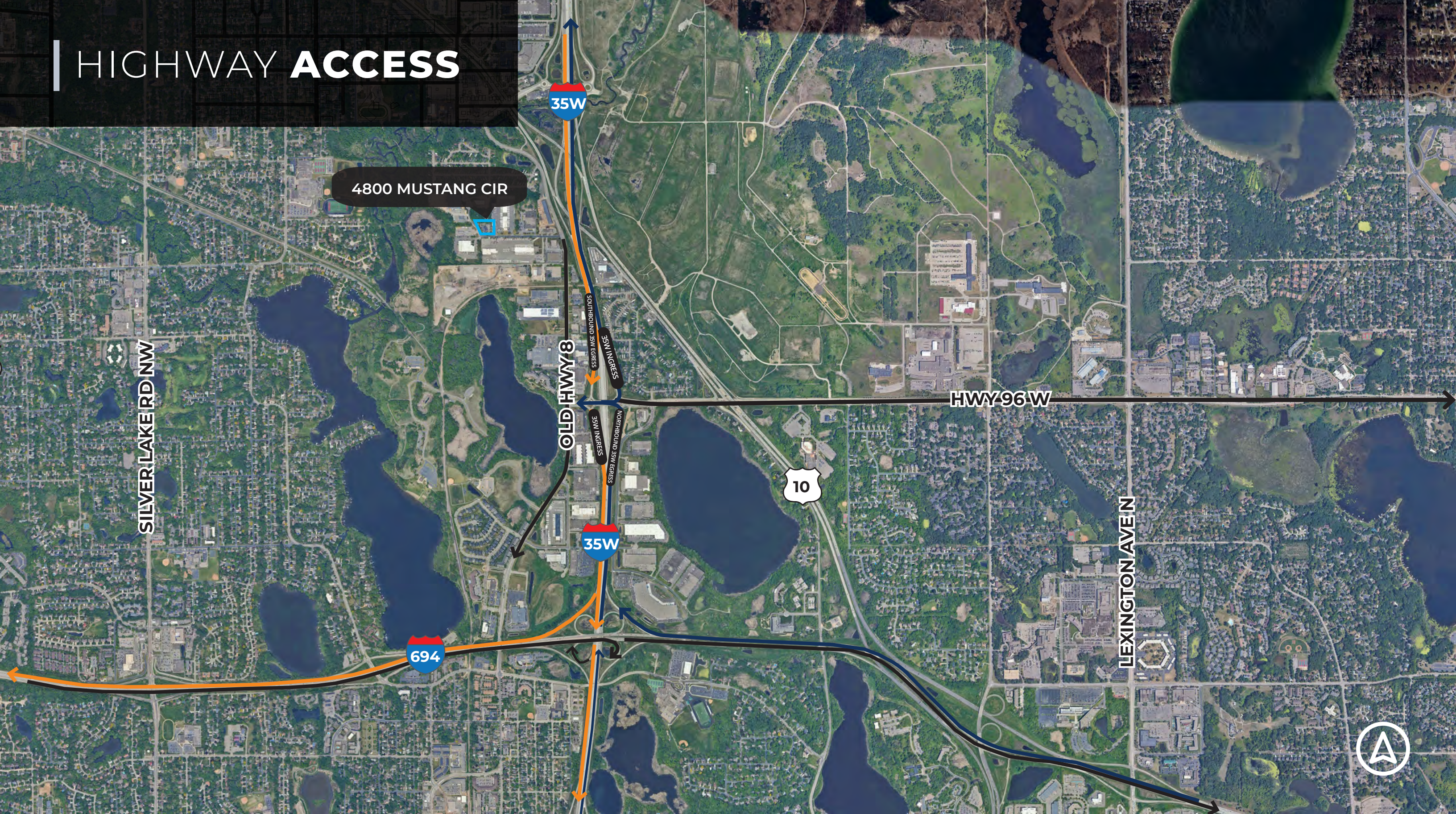


AREA BUSINESSES

4800 MUSTANG CIR



HIGHWAY ACCESS



THINKING BEYOND THE OBVIOUS



BEN YOUDS

Associate
612.359.1650
ben.youds@transwestern.com

CHRIS WEIRENS

Senior Vice President | Principal
612.359.1603
chris.weirens@transwestern.com