

PIEDMONT WEST MEDICAL CENTER

1800 Howell Mill Road, Atlanta, GA 30318

SUB-LEASE SPACE AVAILABLE!

**SOUTHEAST
HEALTHCARE
ADVISORY
SERVICES**

DANIEL TOPPING

Vice President,
Healthcare Advisory Services

404.226.0297

daniel.topping@transwestern.com

STEVE HALL

Senior Managing Director,
Healthcare Advisory Services

404.842.6560

steve.hall@transwestern.com



T
TRANSWESTERN
REAL ESTATE
SERVICES

PROPERTY HIGHLIGHTS



257,528 SF - 8 Story
Class A Building
Built in 2007



BOMA International
TOBY® Award
Winner 2012



Piedmont
Anchor Tenant



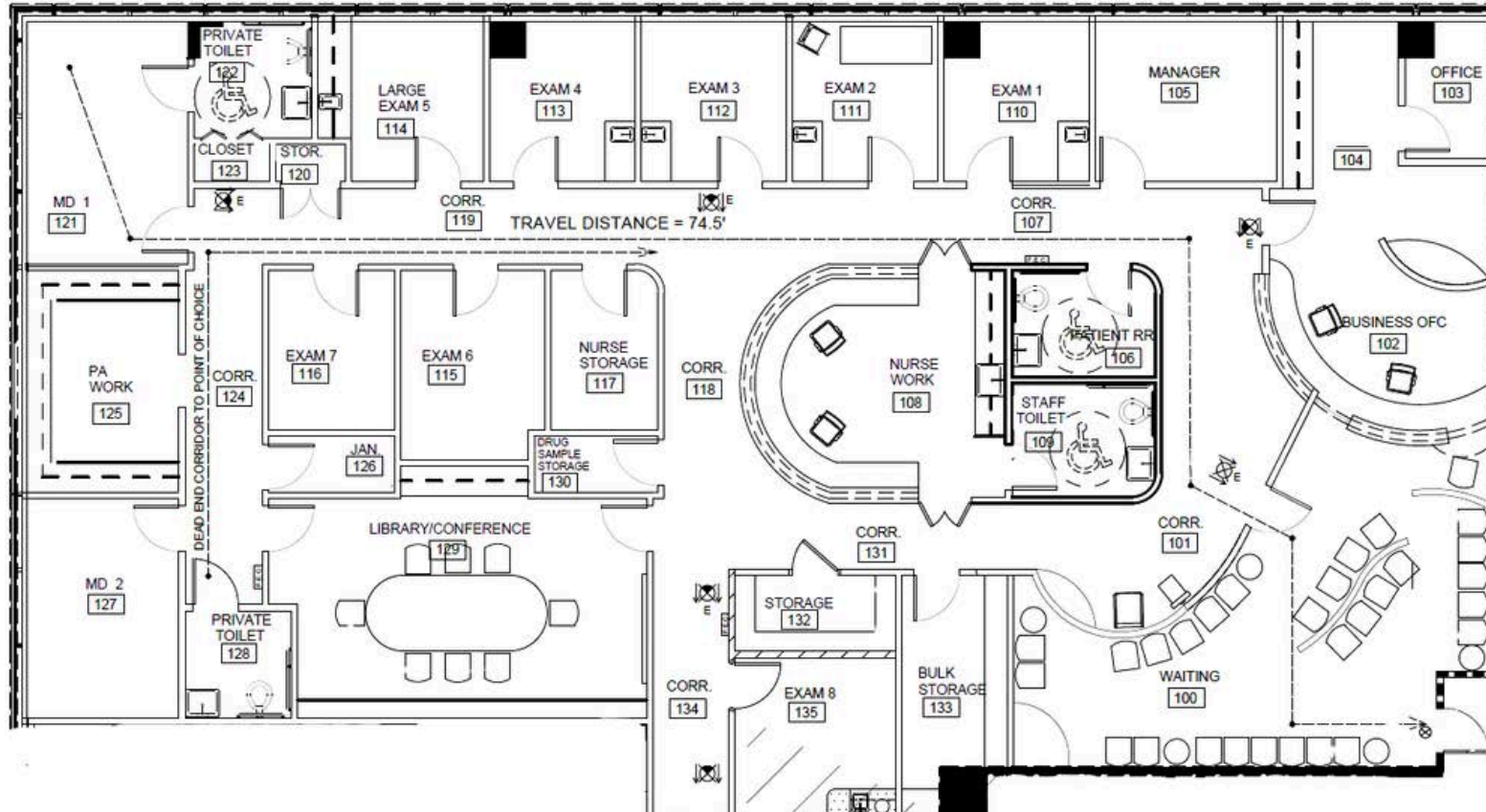
Direct Access to
I-75 & I-85



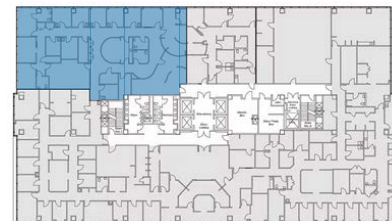
1,025 Space Parking Garage with
covered patient drop-off



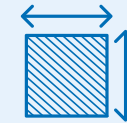
SUITE 475



BUILDING PLAN
4TH FLOOR



SUB-LEASE HIGHLIGHTS



5,558 RSF
Available



Available for
sublease through
May 31st, 2028



2 MD &
1 Manager Office



PA Workstation



8 Exam Rooms



4 Restrooms



Multiple Storage
Rooms

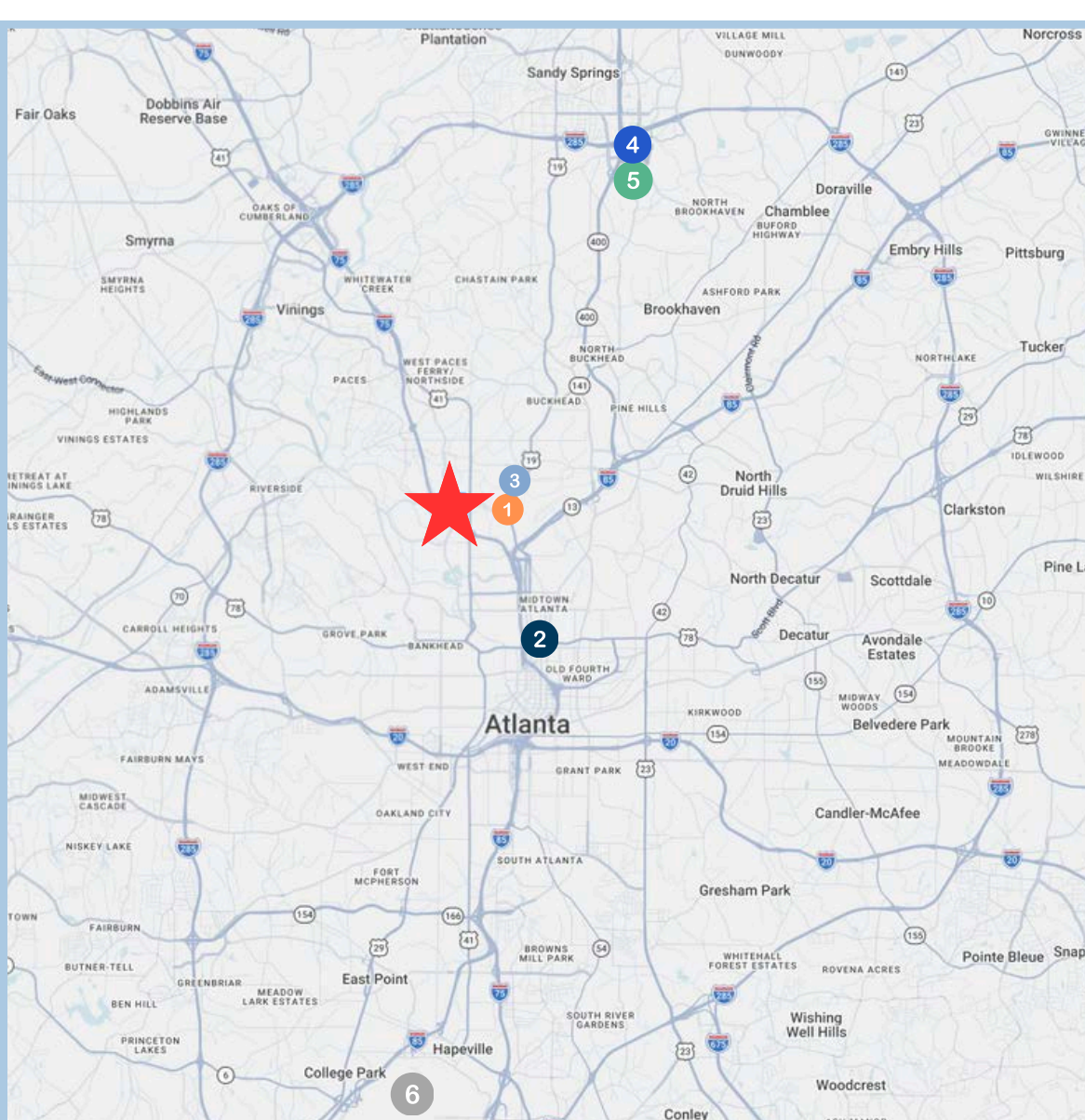


Conference Room



AREA DEMOGRAPHICS

The surrounding Howell Mill corridor is supported by a strong and growing demographic base, with more than 335,000 residents within a five-mile radius and an average household income of approximately \$146,645, reflecting a well-insured and economically stable population. This rapidly developing submarket offers a balanced mix of residential, retail, and employment density, creating a convenient and well-supported environment for both patients and healthcare providers.



PROXIMITY TO KEY DESTINATIONS



1 **Piedmont Atlanta Hospital**

10 min | 2.5 mi

2 **Emory University Hospital
Midtown**

15 min | 11 mi

3 **Shepherd Center**

10 min | 2.6 mi

4 **Northside Hospital Atlanta**

15 min | 11.6 mi

5 **Children's Healthcare of Atlanta
Scottish Rite**

15 min | 11.3 mi

6 **Hartsfield-Jackson Atlanta
International Airport**

20 min | 13.7 mi

Let's do this.

SOUTHEAST HEALTHCARE ADVISORY SERVICES



DANIEL TOPPING

Vice President,
Healthcare Advisory Services
404.226.0297
daniel.topping@transwestern.com

STEVE HALL

Senior Managing Director,
Healthcare Advisory Services
404.842.6560
steve.hall@transwestern.com