



**950 N POINT PKWY**  
950 NORTH POINT PKWY. ALPHARETTA, GA 30005



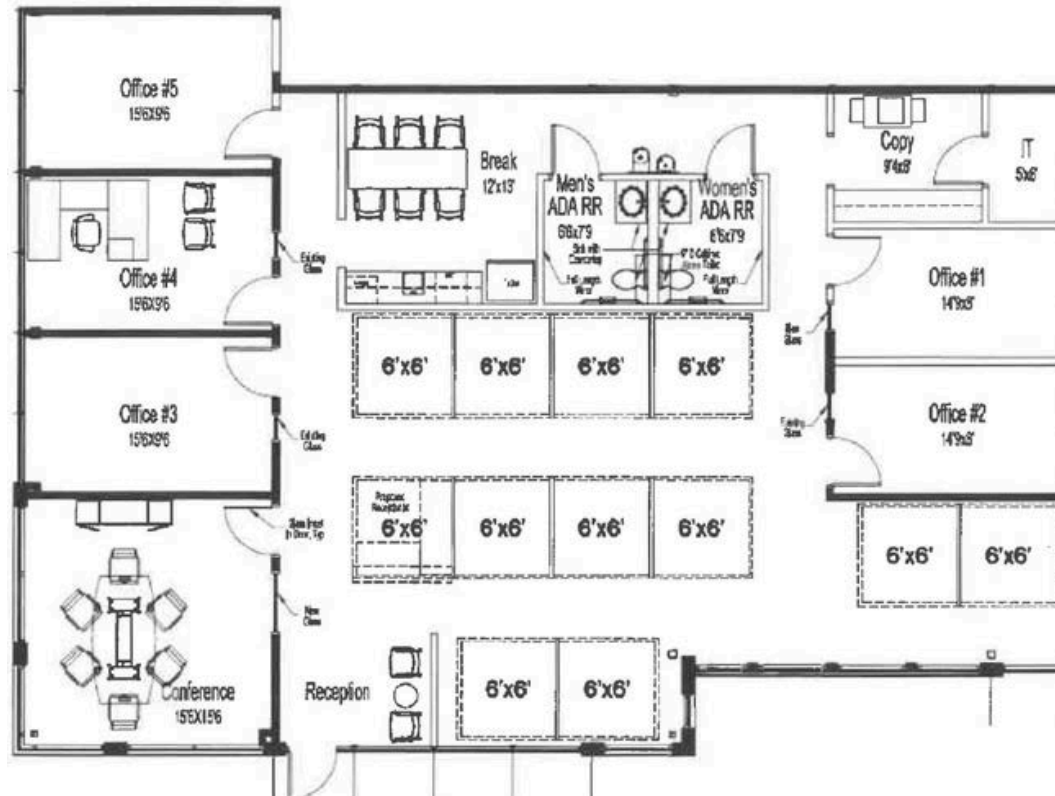
## AVAILABLE FLOORPLANS

**SUITE 150**  
1,688 RSF



3,235 RSF

3,235 RSF





## PROPERTY HIGHLIGHTS



Direct Access from  
Parking Lot



2.3 Miles from  
Northside Alpharetta  
Medical Campus



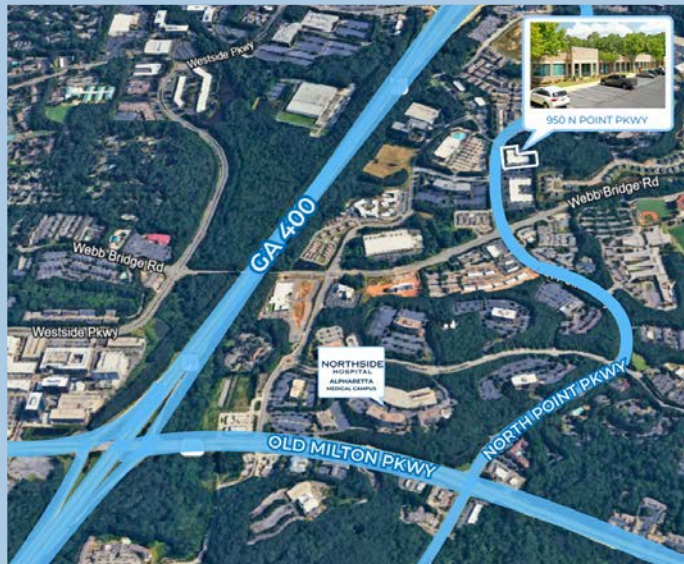
Highly Visible Suite Facing  
North Point Pkwy.



Building Built in 1995







## CONTACT US



**STEVE HALL**

404.842.6560

[steve.hall@transwestern.com](mailto:steve.hall@transwestern.com)



**JOHN V. LOPEZ, CCIM, RPA**

404.842.6562

[john.lopez@transwestern.com](mailto:john.lopez@transwestern.com)



**BO STUART**

404.842.6556

[bo.stuart@transwestern.com](mailto:bo.stuart@transwestern.com)



**MARSH HAZLEHURST**

404.842.6574

[marsh.hazlehurst@transwestern.com](mailto:marsh.hazlehurst@transwestern.com)

