



2400 NW 24th St

OFFICE BUILDING FOR SALE

2400 Northwest 24th Street
Fort Worth, TX 76106

 Transwestern

About the Building

Well-Located Office Opportunity

2400 NW 24th Street offers a well-located opportunity in Fort Worth with convenient access to major thoroughfares and surrounding amenities. The property provides a functional layout suitable for a variety of office or commercial users.

PROPERTY INFORMATION

- Building Size: 11,895 SF
- Located on 1.57 Acres
- 37 Parking Spaces
- Zoning: "CF" Community Facilities



Gibson Duwe

Principal
(817) 713-3517
gibson.duwe@transwestern.com

Kyle Poulson

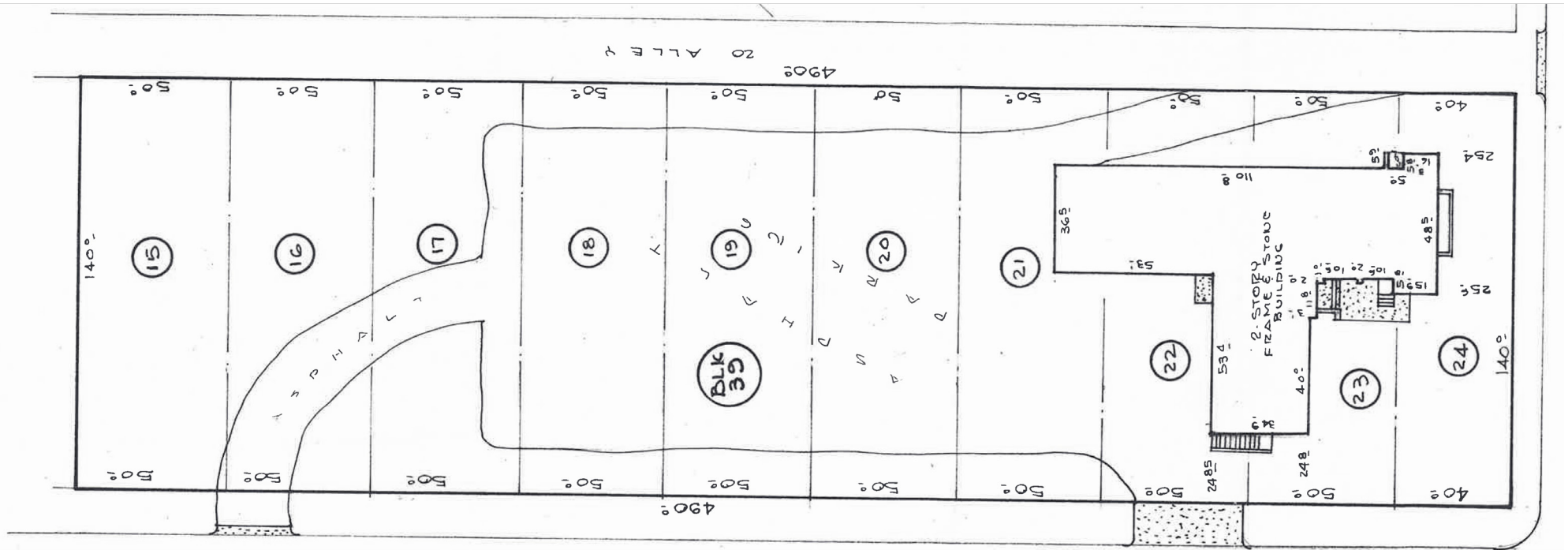
Principal
(817) 259-3520
kyle.poulson@transwestern.com

Trevor Brown

Senior Associate
(512) 750-3550
trevor.brown@transwestern.com

 Transwestern

Survey



Gibson Duwe

Principal
(817) 713-3517
gibson.duwe@transwestern.com

Kyle Poulson

Principal
(817) 259-3520
kyle.poulson@transwestern.com

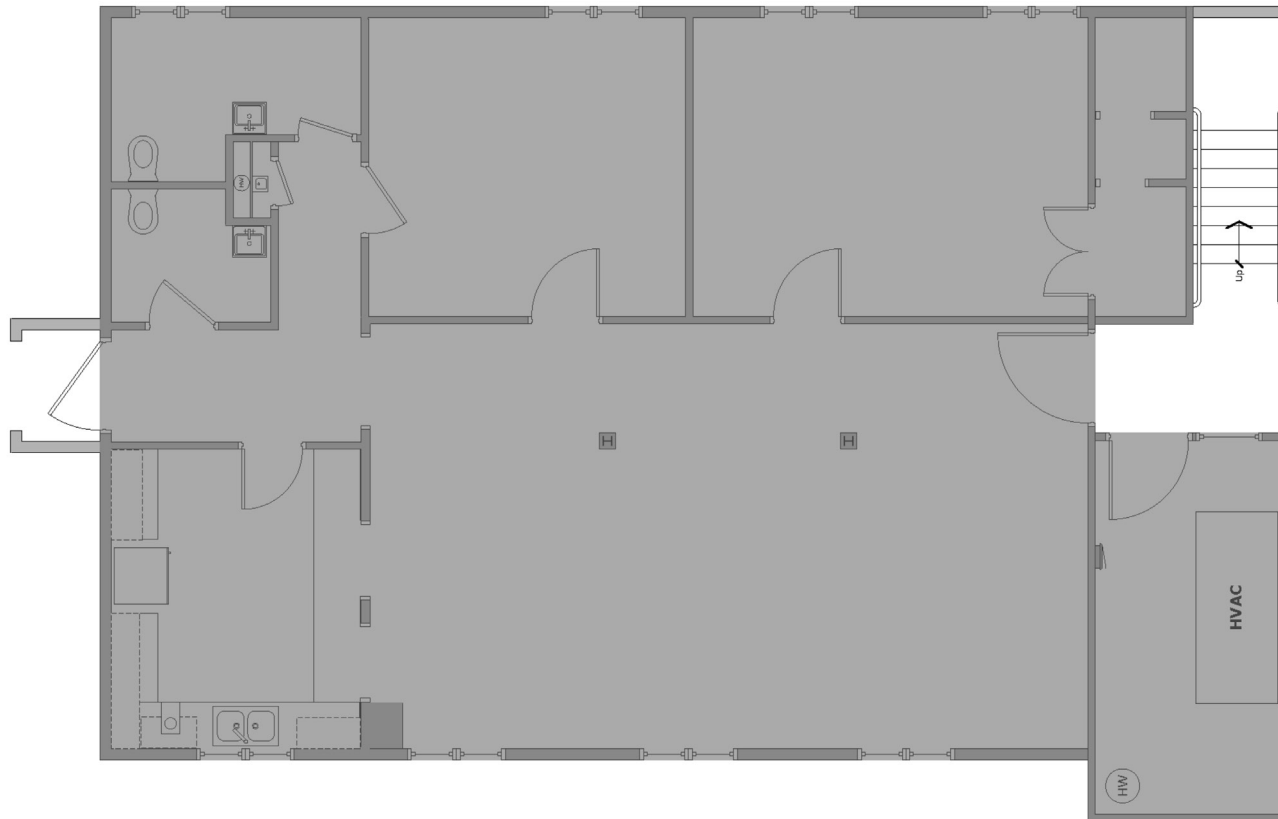
Trevor Brown

Senior Associate
(512) 750-3550
trevor.brown@transwestern.com

2400 NW 24th St
Fort Worth, TX 76106

Floor Plan

BASEMENT • +/- 1,607 SF AVAILABLE



Gibson Duwe

Principal
(817) 713-3517
gibson.duwe@transwestern.com

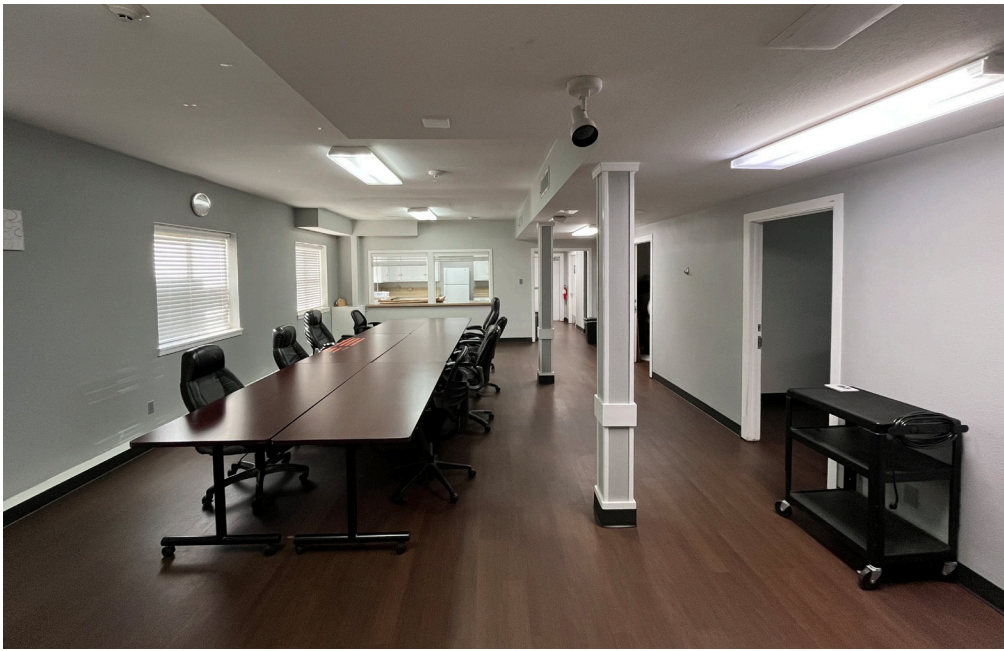
Kyle Poulson

Principal
(817) 259-3520
kyle.poulson@transwestern.com

Trevor Brown

Senior Associate
(512) 750-3550
trevor.brown@transwestern.com





Gibson Duwe

Principal
(817) 713-3517
gibson.duwe@transwestern.com

Kyle Poulson

Principal
(817) 259-3520
kyle.poulson@transwestern.com

Trevor Brown

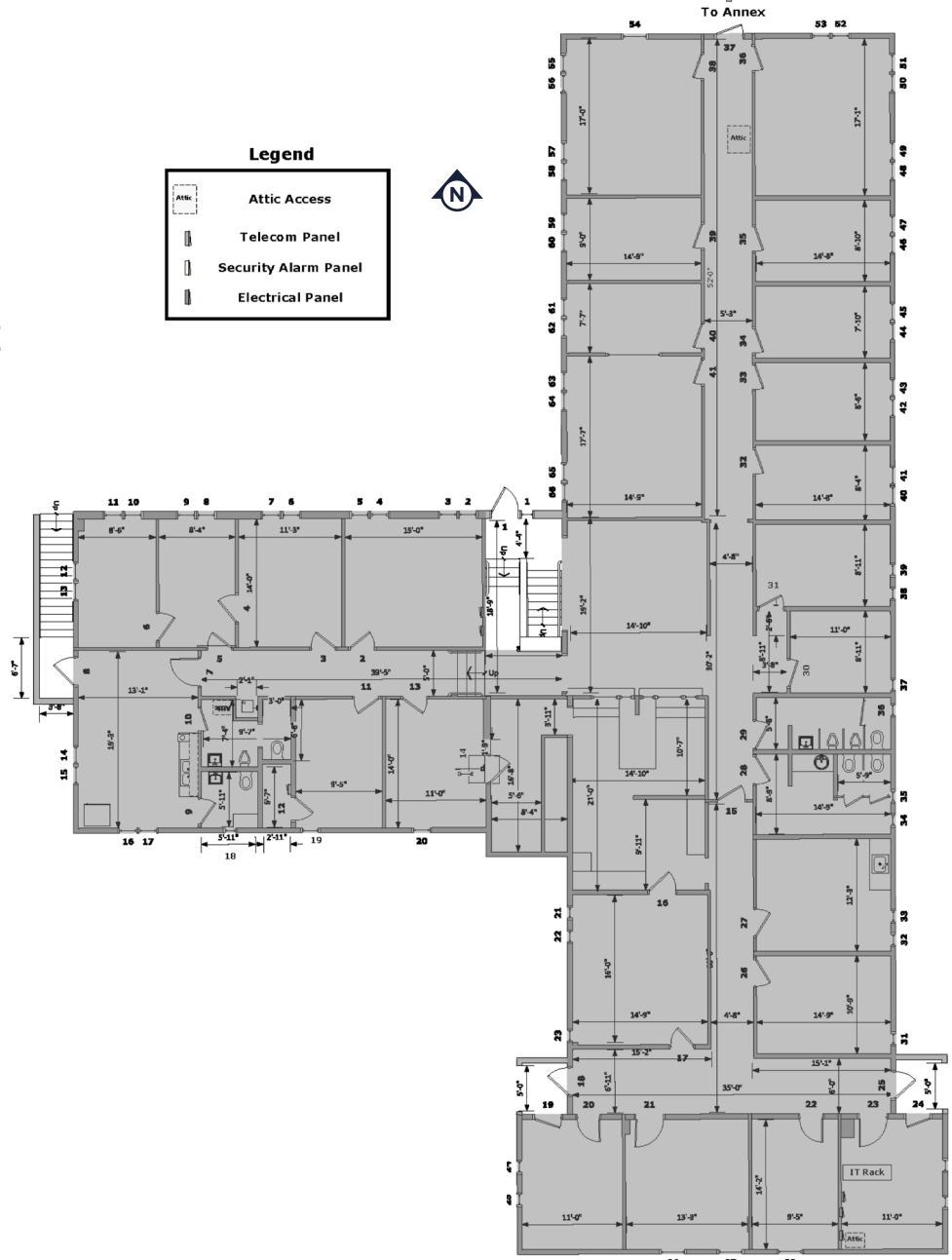
Senior Associate
(512) 750-3550
trevor.brown@transwestern.com



2400 NW 24th St
Fort Worth, TX 76106

Floor Plan

FIRST FLOOR • +/- 6,748 SF AVAILABLE



Gibson Duwe
Principal
(817) 713-3517
gibson.duwe@transwestern.com

Kyle Poulson
Principal
(817) 259-3520
kyle.poulson@transwestern.com

Trevor Brown
Senior Associate
(512) 750-3550
trevor.brown@transwestern.com





Gibson Duwe

Principal
(817) 713-3517
gibson.duwe@transwestern.com

Kyle Poulson

Principal
(817) 259-3520
kyle.poulson@transwestern.com

Trevor Brown

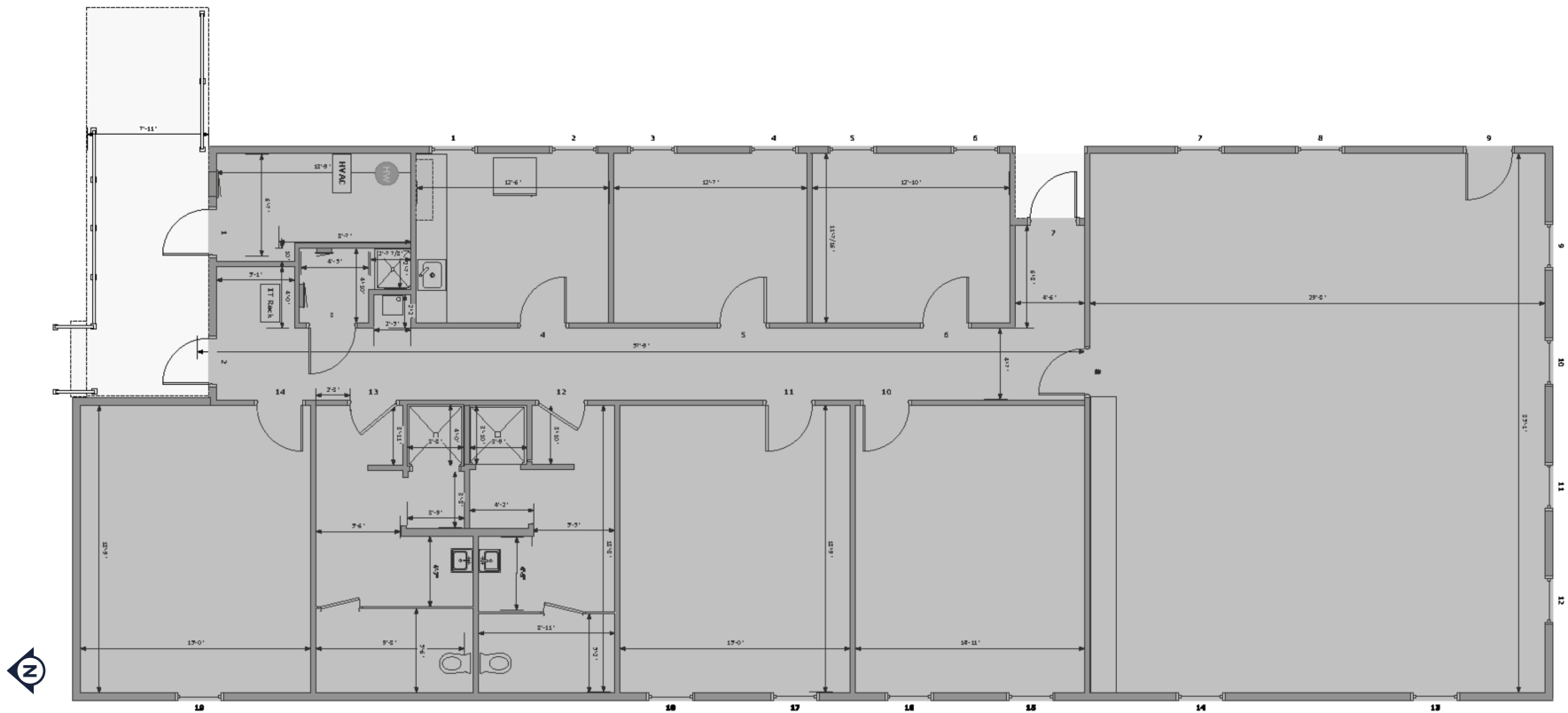
Senior Associate
(512) 750-3550
trevor.brown@transwestern.com



2400 NW 24th St
Fort Worth, TX 76106

Floor Plan

ANNEX • +/- 3,515 SF AVAILABLE



Gibson Duwe

Principal
(817) 713-3517
gibson.duwe@transwestern.com

Kyle Poulson

Principal
(817) 259-3520
kyle.poulson@transwestern.com

Trevor Brown

Senior Associate
(512) 750-3550
trevor.brown@transwestern.com





Gibson Duwe

Principal
(817) 713-3517
gibson.duwe@transwestern.com

Kyle Poulson

Principal
(817) 259-3520
kyle.poulson@transwestern.com

Trevor Brown

Senior Associate
(512) 750-3550
trevor.brown@transwestern.com





Get in Touch

Gibson Duwe

Principal
(817) 713-3517
gibson.duwe@transwestern.com

Kyle Poulson

Principal
(817) 259-3520
kyle.poulson@transwestern.com

Trevor Brown

Senior Associate
(512) 750-3550
trevor.brown@transwestern.com