

# INTREPID BUSINESS PARK

5747 BRITTMOORE ROAD | SUITE 200 | HOUSTON, TEXAS 77041

PROJECT OF



FOR LEASE!

## 10,400 SQ FT CLASS A OFFICE & WAREHOUSE



### BUILDING FEATURES

- 10,400 SF total | 819 SF office
- 9,851 SF Warehouse
- 52' x 50' Column spacing
- 30' Clear height
- ESFR sprinklered
- One (1) OH loading door
- One (1) Drive-in Ramp
- 200' Building depth
- 130' Truck apron
- Convenient access to Beltway 8, Highway 290 and I-10

### LOCATION MAP



### TRANSWESTERN LEASING INFORMATION

**Darryl Noon**  
darryl.noon@transwestern.com  
713.270.3325

**Brian Gammill**  
brian.gammill@transwestern.com  
713.270.3321

The information provided herein was obtained from sources believed reliable; however, Transwestern makes no guarantees, warranties or representations as to the completeness or accuracy thereof. The presentation of this property is submitted subject to errors, omissions, change of price or conditions, prior sale or lease, or withdrawal without notice. Copyright © 2025 Transwestern.



# INTREPID BUSINESS PARK

5747 BRITTMOORE ROAD | SUITE 200 | HOUSTON, TEXAS 77041

PROJECT OF



## AERIAL MAP

IAH BUSH AIRPORT 20 MILES

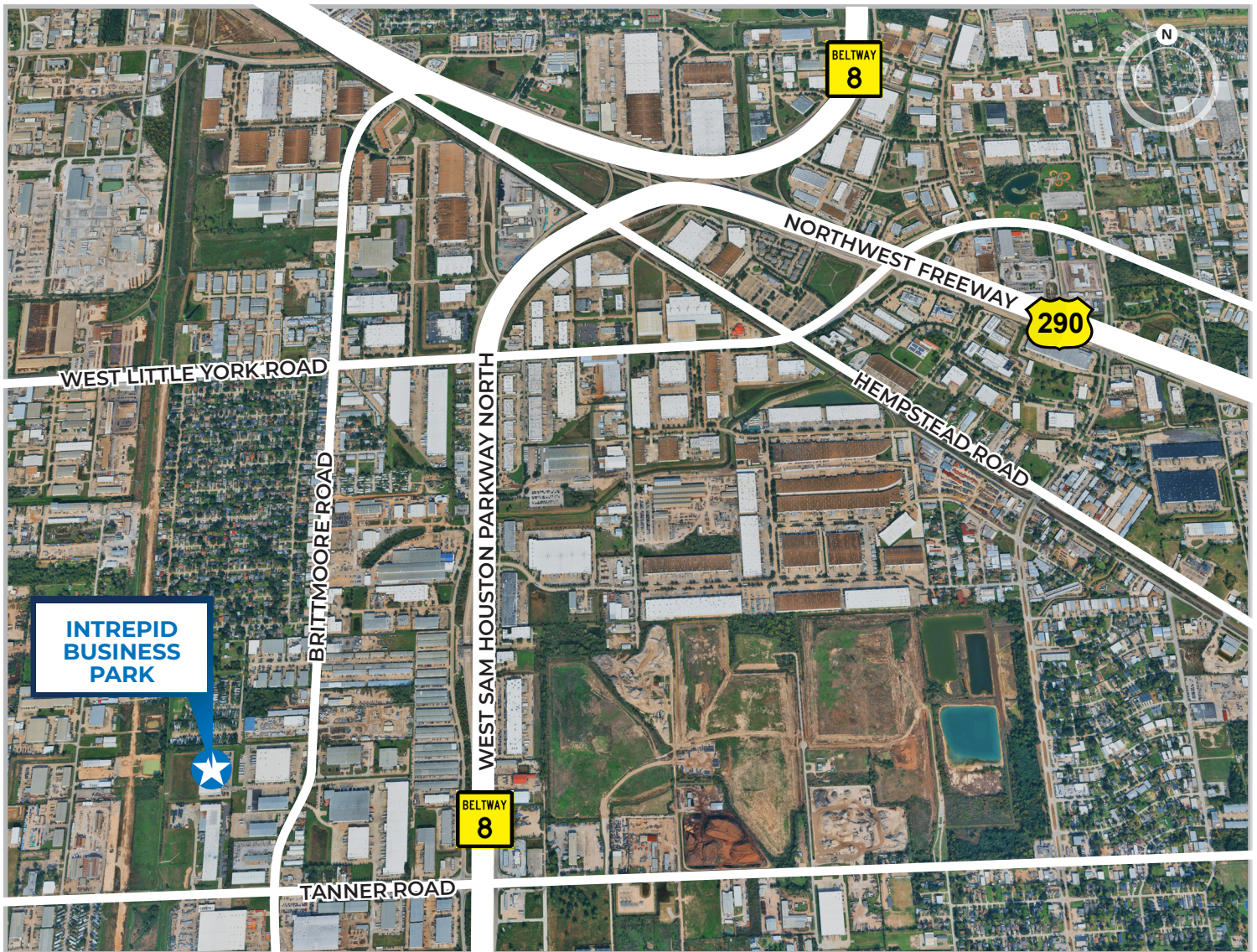
DOWNTOWN 20 MILES

PORT OF HOUSTON 25 MILES

HOUSTON GALLERIA 15 MILES

MEDICAL CENTER 23 MILES

HOBBY AIRPORT 30 MILES



### TRANSWESTERN LEASING INFORMATION

**Darryl Noon**

darryl.noon@transwestern.com  
713.270.3325

**Brian Gammill**

brian.gammill@transwestern.com  
713.270.3321

The information provided herein was obtained from sources believed reliable; however, Transwestern makes no guarantees, warranties or representations as to the completeness or accuracy thereof. The presentation of this property is submitted subject to errors, omissions, change of price or conditions, prior sale or lease, or withdrawal without notice. Copyright © 2025 Transwestern.

# INTREPID BUSINESS PARK

5747 BRITTMOORE ROAD | SUITE 200 | HOUSTON, TEXAS 77041

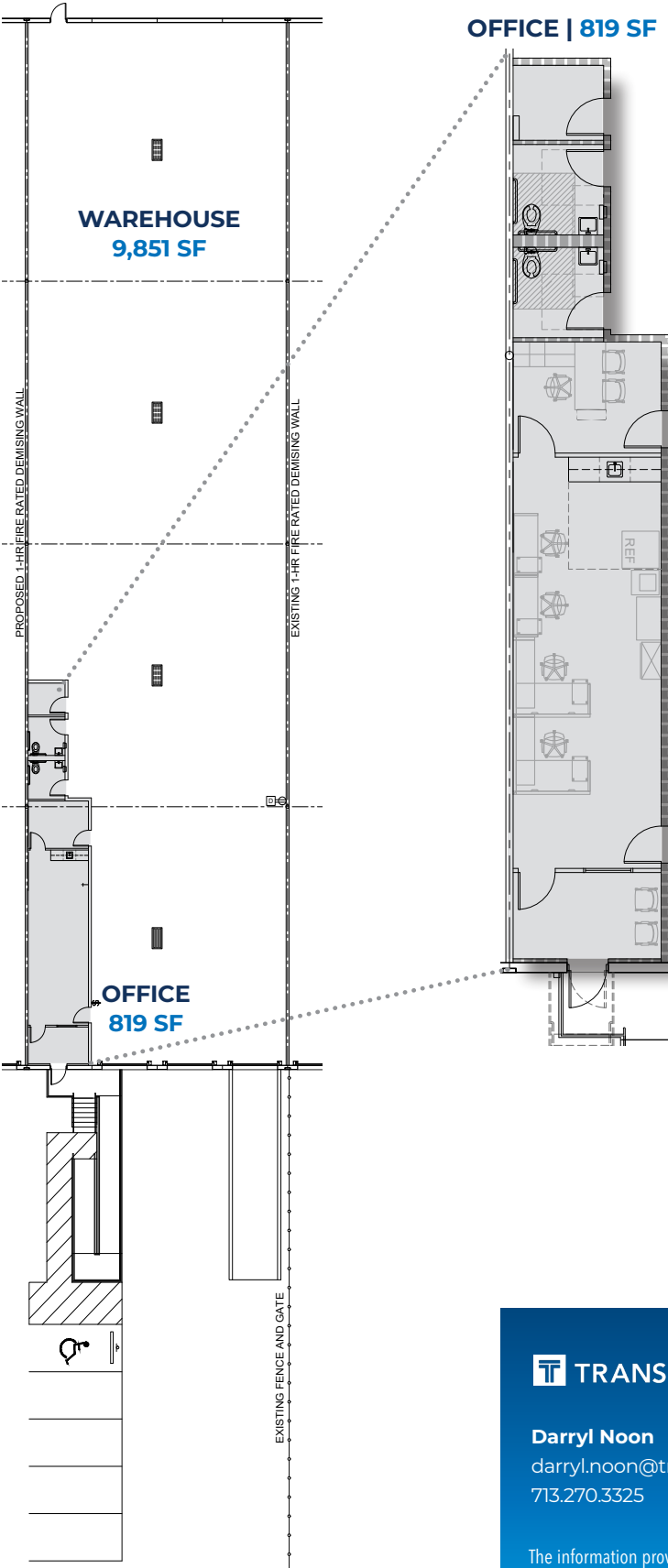
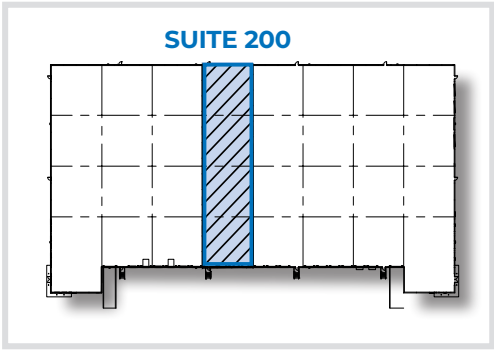


## FLOOR PLAN

TOTAL SF AVAILABLE  
**10,400 SF**

WAREHOUSE SF	OFFICE SF
<b>9,851 SF</b>	<b>819 SF</b>

5747 BRITTMOORE ROAD



### TRANSWESTERN LEASING INFORMATION

**Darryl Noon**  
darryl.noon@transwestern.com  
713.270.3325

**Brian Gammill**  
brian.gammill@transwestern.com  
713.270.3321

The information provided herein was obtained from sources believed reliable; however, Transwestern makes no guarantees, warranties or representations as to the completeness or accuracy thereof. The presentation of this property is submitted subject to errors, omissions, change of price or conditions, prior sale or lease, or withdrawal without notice. Copyright © 2025 Transwestern.