



PRESERVE VILLAGE

Retail For Lease | Eden Prairie, MN

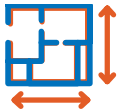
JANET OLSON | 612.359.1681 | janet.olson@transwestern.com

PRESERVE VILLAGE OVERVIEW



SITE INFORMATION

Location: 9605-9645 Anderson Lakes Parkway | Eden Prairie
Year Built: 1980
GLA: 76,612 SF
Parking: Surface Lot | 280 Stalls
Signage: Pylon signage available to qualified premises



AVAILABILITY

Suite 9643: 1,224 SF leasable



2024 OPEX

CAM: \$4.83 PSF
Taxes: \$5.01 PSF
TOTAL: \$9.84 PSF



TRAFFIC COUNTS

Highway 169: 77,000 VPD
Anderson Lakes Parkway: 7,500 VPD



DEMOGRAPHICS

	1 Mile	3 Mile	5 Mile
Population	5,891	51,793	148,377
Daytime Population	4,898	68,858	203,742
Median HH Income	\$114,710	\$100,135	\$99,544
Average HH Income	\$154,916	\$137,111	\$135,944



CENTER TENANTS



Memories of Home



FOR INFORMATION CONTACT:

JANET OLSON | 612.359.1681
janet.olson@transwestern.com

The information provided herein was obtained from sources believed reliable; however, Transwestern makes no guarantees, warranties or representations as to the completeness of accuracy thereof. The presentation of this property is submitted subject to errors, omissions, change of price or conditions, prior to sale or lease, or withdrawal without notice. Copyright © 2020 Transwestern.

PRESERVE VILLAGE AERIAL


TRANSWESTERN
REAL ESTATE
SERVICES



FOR MORE INFO CONTACT:

JANET OLSON | 612.359.1681 | janet.olson@transwestern.com

 **REALTY
RESOURCES**
MEMBER

PRESERVE VILLAGE SITE PLAN



TRANSWESTERN

REAL ESTATE
SERVICES

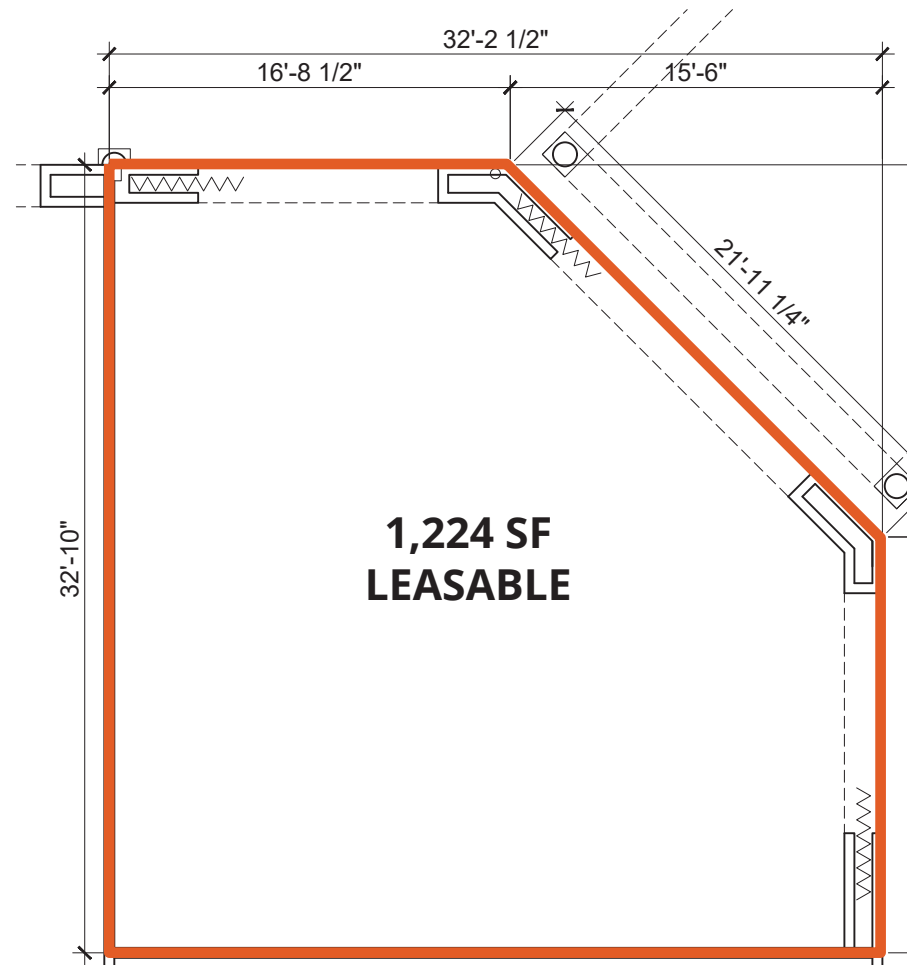
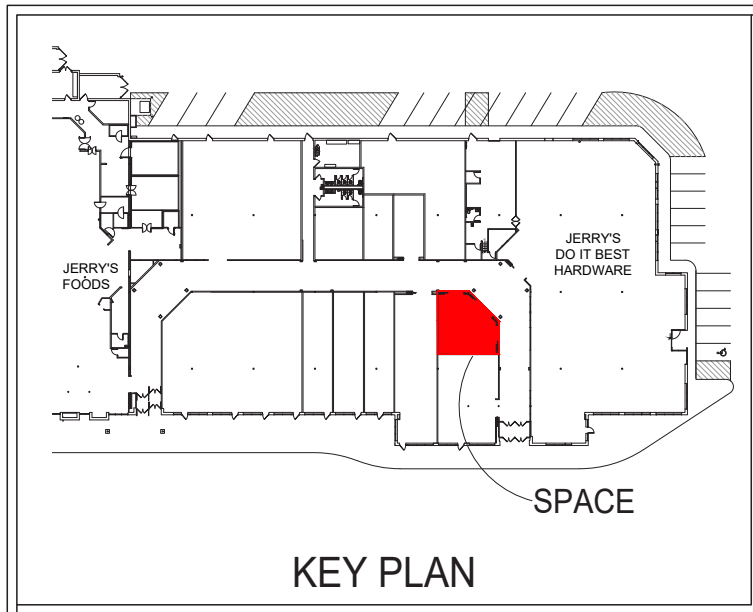


FOR MORE INFO CONTACT:

JANET OLSON | 612.359.1681 | janet.olson@transwestern.com

REALTY
RESOURCES
MEMBER

PRESERVE VILLAGE SPACE PLAN



FOR MORE INFO CONTACT:

JANET OLSON | 612.359.1681 | janet.olson@transwestern.com

PRESERVE VILLAGE PHOTOS


TRANSWESTERN
REAL ESTATE
SERVICES



FOR MORE INFO CONTACT:

JANET OLSON | 612.359.1681 | janet.olson@transwestern.com

 **REALTY
RESOURCES**
MEMBER