

MEDICAL
OFFICE
SPACE

FOR
SUBLEASE


TRANSWESTERN
REAL ESTATE
SERVICES

8560 Katy Freeway

Houston, TX 77024



MOVE-IN READY LAB SPACE

Building Features:

- Direct access to Katy Freeway
- Close proximity to Memorial City Mall and Memorial Hermann Hospital Complex
- Approximately 12 minutes to Downtown Houston and 6 minutes to The Galleria
- Property includes 6 office buildings and 6 flex/warehouse buildings

Availability:

Suite 170/200 - 12,124 SF

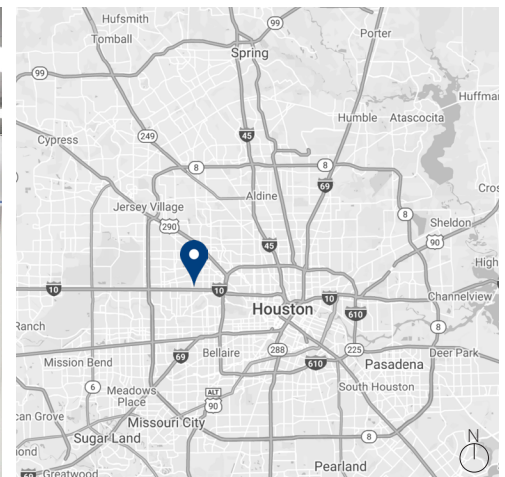
Term Expiration:

November 2023

Lease Rate:

\$12.00 NNN

\$8.50 OPEX



Leasing Information:

**Christian
Connell**

713.231.1588

Christian.Connell@transwestern.com

The information provided herein was obtained from sources believed reliable; however, Transwestern makes no guarantees, warranties or representations as to the completeness of accuracy thereof. The presentation of this property is submitted subject to errors, omissions, change of price or conditions, prior to sale or lease, or withdrawal without notice. Copyright © 2022 Transwestern.

8560 Katy Freeway

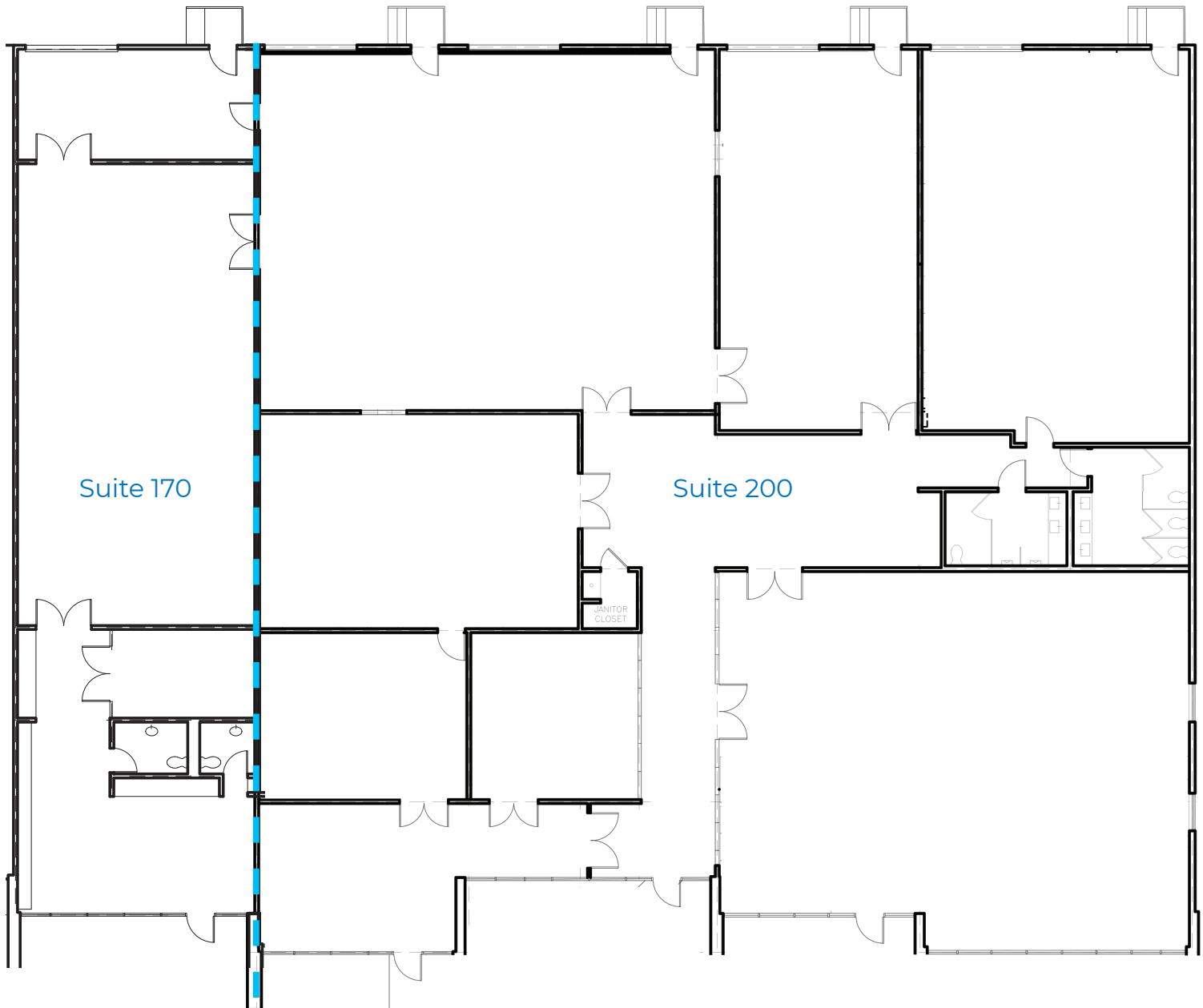
Houston, TX 77024



TRANSWESTERN

REAL ESTATE
SERVICES

Sublease
Suite 170/200
12,124 SF



Leasing Information:

**Christian
Connell**

713.231.1588

Christian.Connell@transwestern.com

The information provided herein was obtained from sources believed reliable; however, Transwestern makes no guarantees, warranties or representations as to the completeness of accuracy thereof. The presentation of this property is submitted subject to errors, omissions, change of price or conditions, prior to sale or lease, or withdrawal without notice. Copyright © 2022 Transwestern.

8560 Katy Freeway

Houston, TX 77024



TRANSWESTERN

REAL ESTATE
SERVICES



Leasing Information:

**Christian
Connell**

713.231.1588

Christian.Connell@transwestern.com

The information provided herein was obtained from sources believed reliable; however, Transwestern makes no guarantees, warranties or representations as to the completeness of accuracy thereof. The presentation of this property is submitted subject to errors, omissions, change of price or conditions, prior to sale or lease, or withdrawal without notice. Copyright © 2022 Transwestern.