

Clay Crossing Business Center

11335 CLAY ROAD, SUITE 190 - HOUSTON, TX 77041



- AVAILABLE FOR LEASE -

25,312 SF OFFICE/LAB
CLASS A PRIME END-CAP SPACE



AERIAL MAP

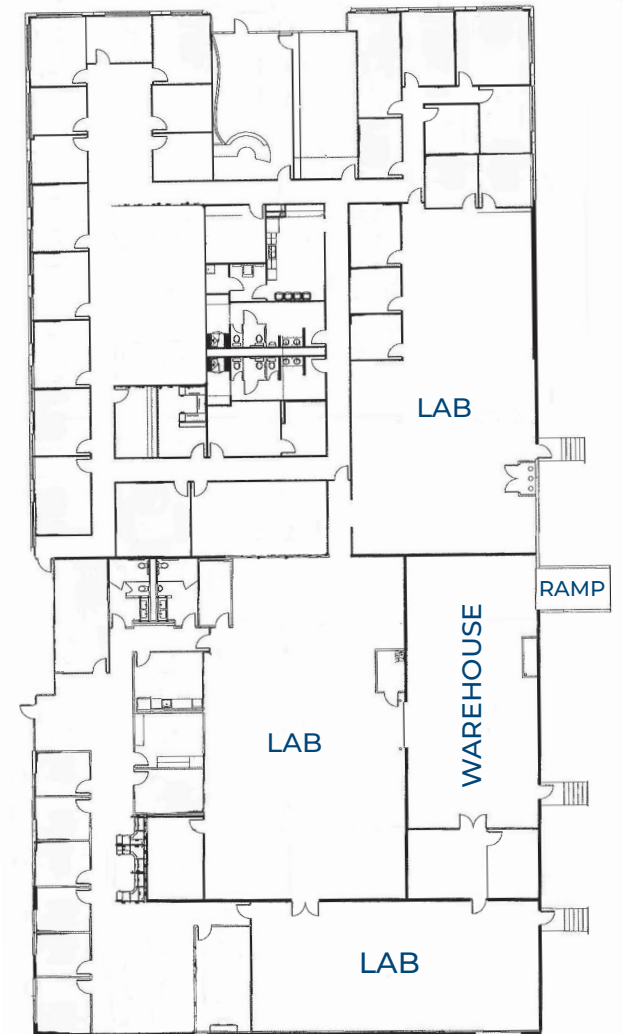


FLOOR PLAN & FEATURES

- Master planned environment
- Outstanding visibility and corporate identity
- Excellent accessibility
- Tilt-up concrete construction
- All concrete paving
- Cost effective alternative to full gross office space with no add on factor
- Productive and exclusive working environment with ability to control HVAC and electrical usage
- 24/7 Access



SUITE	190
SQ FT	25,312 SF
OFFICE/LAB SPACE	23,184 SF
WAREHOUSE	2,128 SF



Dock High
Rear Load



One (1)
Drive-in Ramp



20' Average
Clear Height



Corner Space with
Abundant Glass



Abundant
Parking



Fully
Fire Sprinklered

LOCAL AMENITIES

RESTAURANTS

- 1 Pappas BBQ
- 2 Pappadeaux Seafood
- 3 James Coney Island
- 4 Rudy's Bar-BQ
- 5 Taco Cabana
- 6 McDonald's
- 7 Starbucks
- 8 Chick-Fil-A
- 9 Niko Niko'shen
- 10 Kirby Ice House

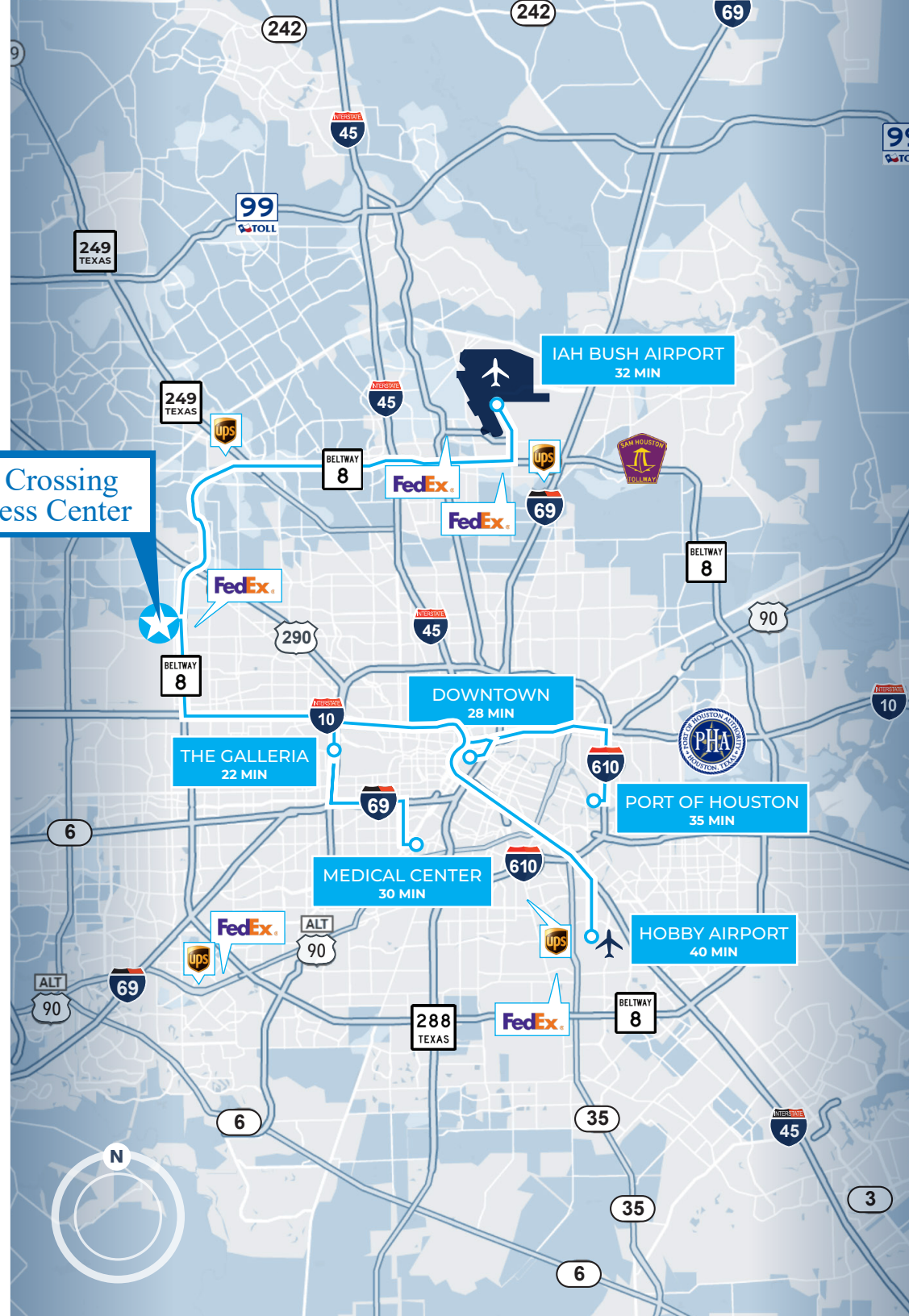
HOTELS

- 11 Residence Inn by Marriott
- 12 Four Points by Sheraton
- 13 Comfort Suites
- 14 Staybridge Suites
- 15 The Westin Houston

SERVICES/RETAIL

- 16 Clay Road YMCA
- 17 Memorial City Mall
- 18 Life Time Fitness
- 19 CITYCENTRE
- 20 Town & Country Village
- 21 FedEx

Clay Crossing
Business Center





HPI HOLDINGS

 **TRANSWESTERN**
LEASING INFORMATION:

Darryl Noon
P: 713.270.3325
E: Darryl.Noon@transwestern.com

Brian Gammill
P: 713.270.3321
E: Brian.Gammill@transwestern.com