



TRANSWESTERN

REAL ESTATE
SERVICES

1915 PLAZA DRIVE

OFFICE FOR LEASE | EAGAN, MN

Chad Anvary | 612.359.1642 | chad.anvary@transwestern.com
Bryan Beltrand | 612.359.1616 | bryan.beltrand@transwestern.com

OFFICE SPACE AVAILABLE

Eagan, MN


TRANSWESTERN

REAL ESTATE
SERVICES



PROPERTY DETAILS

Address: 1915 Plaza Drive | Eagan, MN

Building Size: 31,215 sq. ft.



FOR LEASE

Suite 202: 3,212 sq. ft.

Suite 100: 15,493 sq. ft. (entire 1st floor)

Asking Rate: \$14.00 per sq. ft.

Est. CAM & Tax: \$11.97 per sq. ft.



HIGHLIGHTS

- Class A office finishes
- Building signage available
- Secured underground parking
- Great visibility to I-35E
- Tenant storage available
- Nearby restaurants, hotels and retail



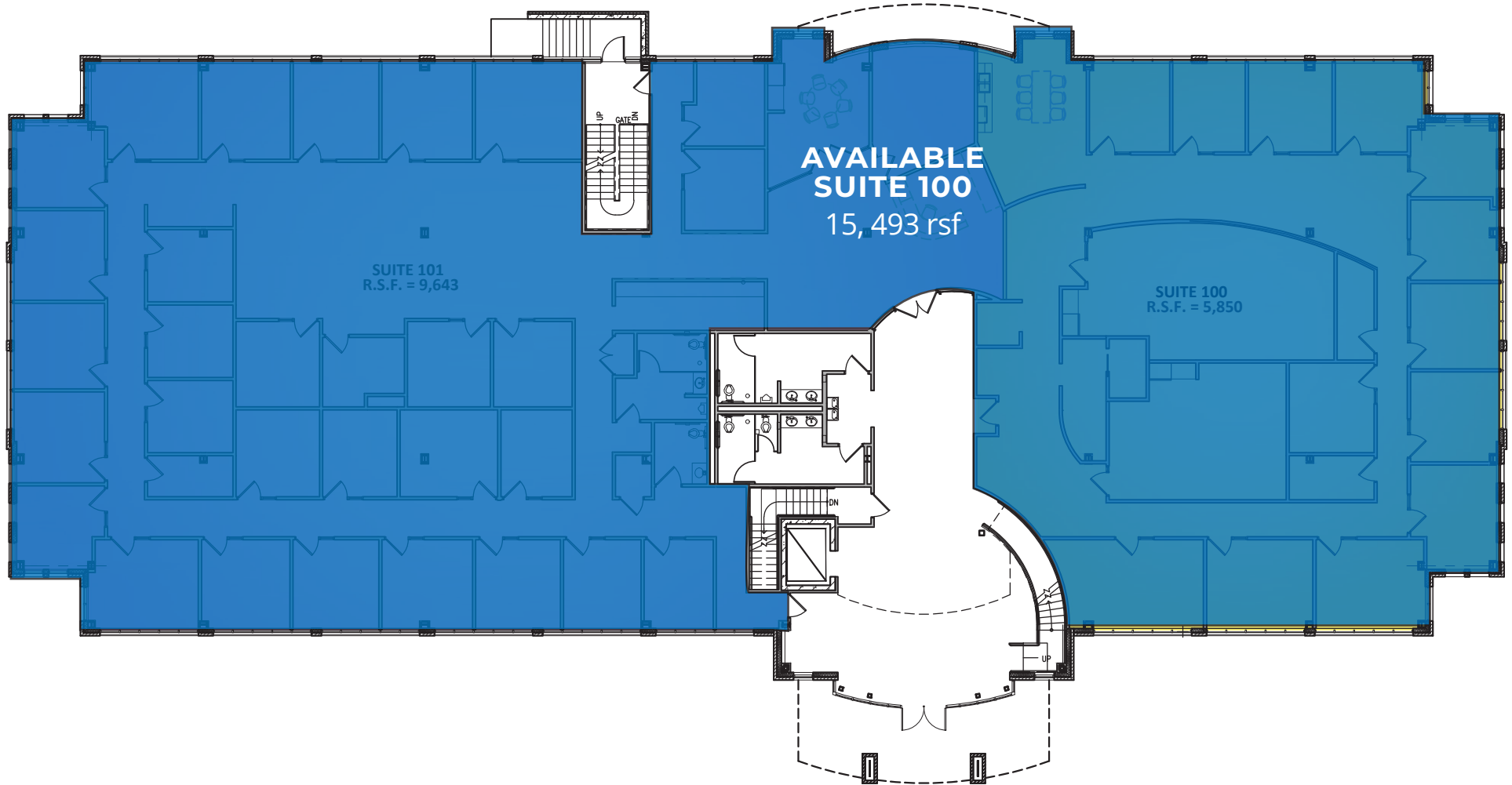
LEASING INFORMATION:

Chad Anvary | 612.359.1642 | chad.anvary@transwestern.com

Bryan Beltrand | 612.359.1616 | bryan.beltrand@transwestern.com

1ST FLOOR PLAN

1915 Plaza Building



LEASING INFORMATION:

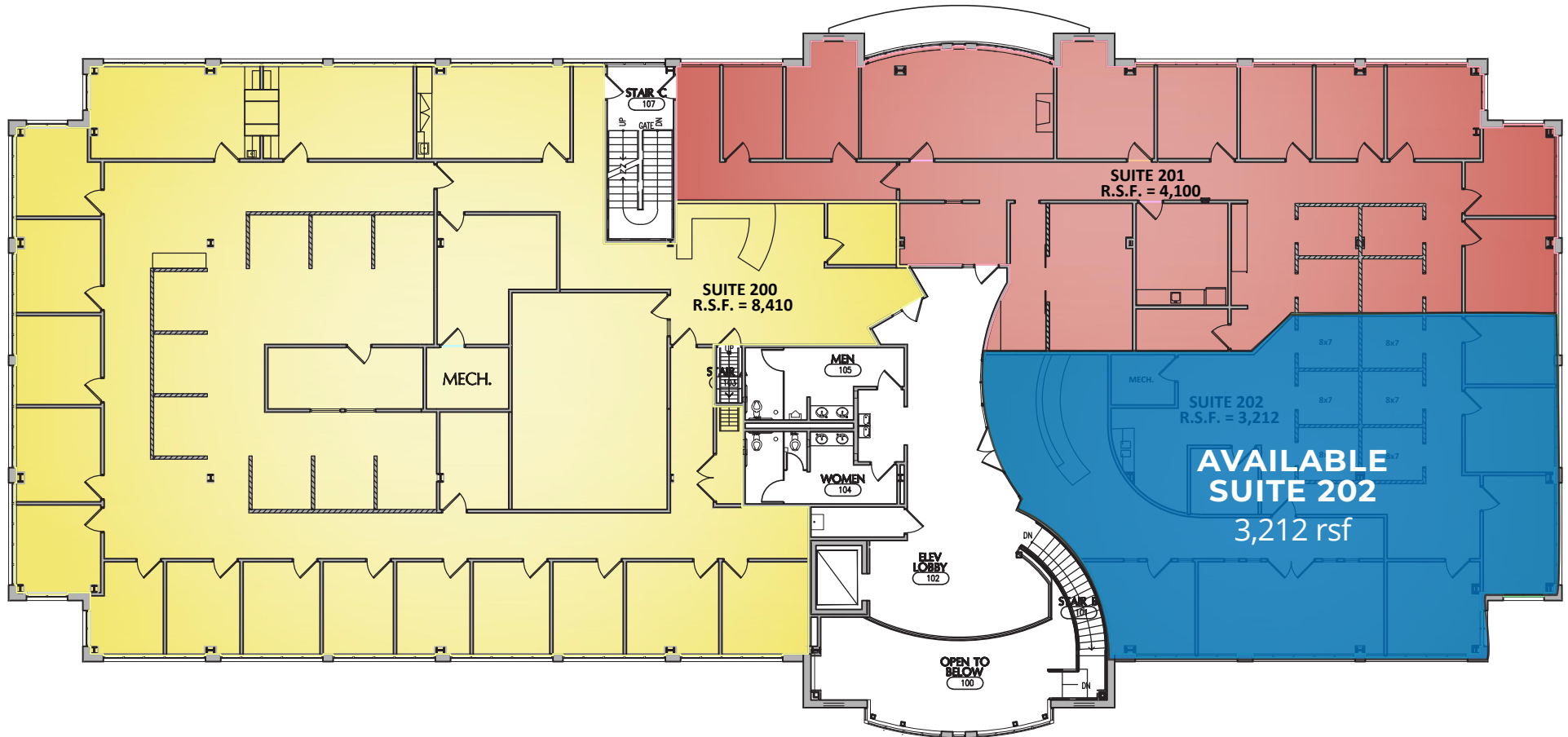
Chad Anvary | 612.359.1642
chad.anvary@transwestern.com

Bryan Beltrand | 612.359.1616
bryan.beltrand@transwestern.com



2ND FLOOR PLAN

1915 Plaza Building



LEASING INFORMATION:

Chad Anvary | 612.359.1642
chad.anvary@transwestern.com

Bryan Beltrand | 612.359.1616
bryan.beltrand@transwestern.com

