

**For
Lease**

5,737 SF

Class B
Industrial
Space

New
Construction



TRANSWESTERN

REAL ESTATE
SERVICES

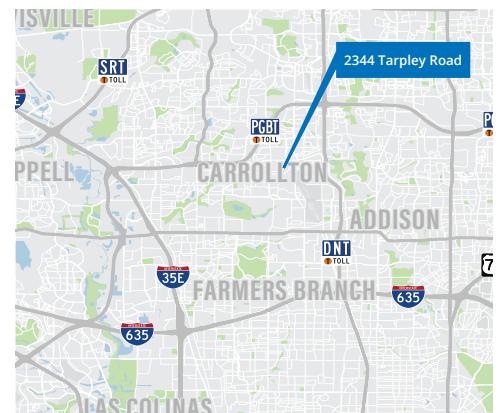
2433 TARPLEY

Carrollton, Texas 75006



Availability:

- 5,737 SF Available
- Zoned Light Industrial
- 1 Dock High Door
- 2 Grade Level Doors
- 22' Clear Height
- Close proximity to I-635, PGBT and DNT
- Located at the Corner of Tarpley Road and Simpson Lane



Leasing Information:

MATT HURLBUT

972.774.2532

matt.hurlbut@transwestern.com

The information provided herein was obtained from sources believed reliable; however, Transwestern makes no guarantees, warranties or representations as to the completeness of accuracy thereof. The presentation of this property is submitted subject to errors, omissions, change of price or conditions, prior to sale or lease, or withdrawal without notice. Copyright © 2020 Transwestern.

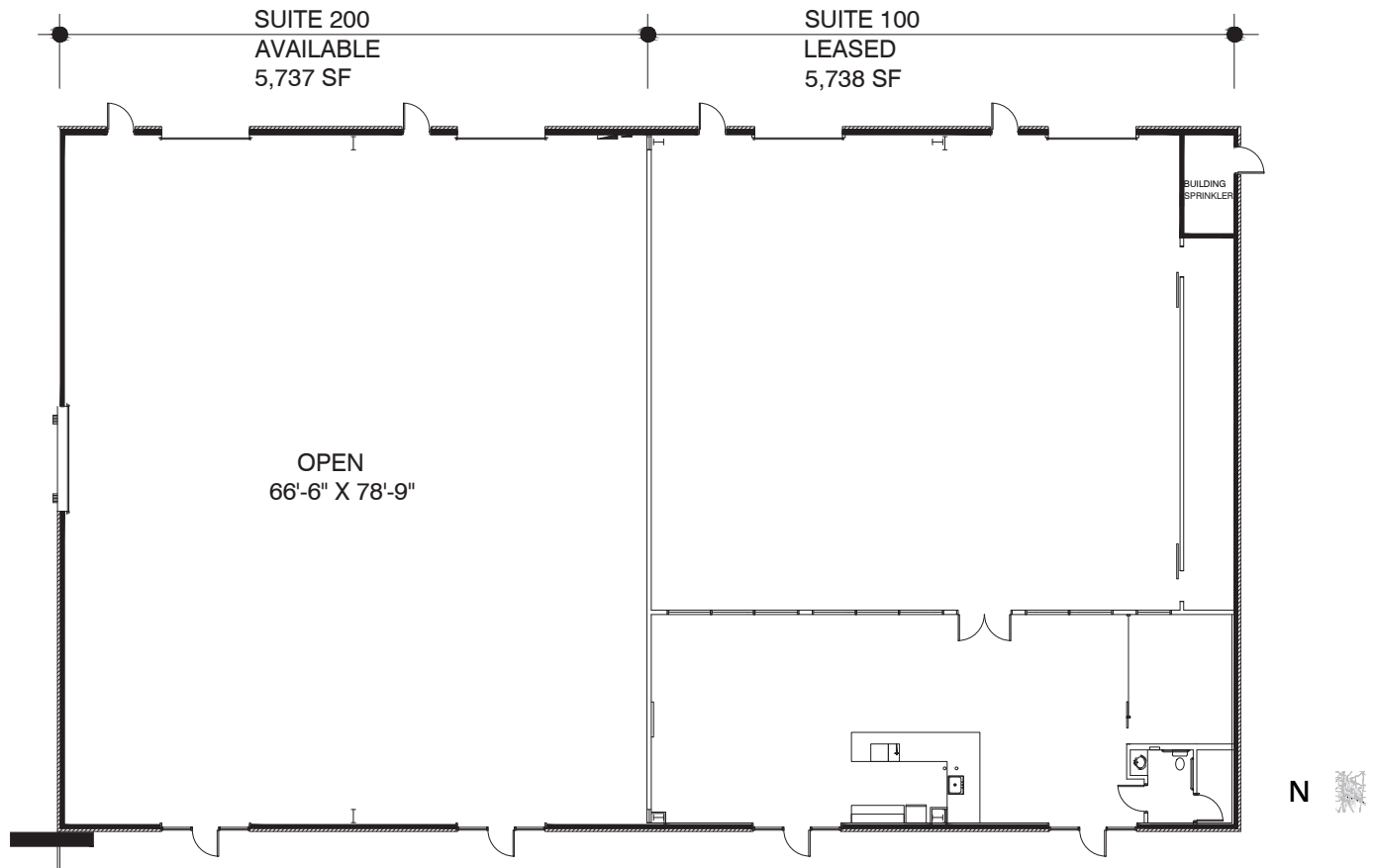
2433 TARPLEY

Carrollton, Texas 75006



TRANSWESTERN

REAL ESTATE
SERVICES



Leasing Information:

MATT HURLBUT

972.774.2532

matt.hurlbut@transwestern.com

The information provided herein was obtained from sources believed reliable; however, Transwestern makes no guarantees, warranties or representations as to the completeness of accuracy thereof. The presentation of this property is submitted subject to errors, omissions, change of price or conditions, prior to sale or lease, or withdrawal without notice. Copyright © 2020 Transwestern.