



TRANSWESTERN

REAL ESTATE
SERVICES



State-of-the-Art Building

BAYPORT
146
DISTRIBUTION CENTER

Adjacent to Bayport Container Terminal!

New 454,600 SF Cross Dock Distribution Building for Lease

» Property Highlights

- A state of the art cross-dock distribution building totaling 454,600 SF with 36' clear height.
- Unique and strategic location adjacent to the **Bayport Container Terminal provides tenants significant drayage cost savings and competitive advantages.**
- Flexible building design with a shallow building depth of 400' can accommodate tenants from 113,680 to 454,600 SF and provides high dock door ratio for staging.
- **Old Highway 146 provides heavy haul loads which allows tenants to maximize container loads and reduces shipping cost.**
- Up to 74 trailer parking spaces and 180' and 150' truck aprons.
- Direct access is provided to the project from (Old) Highway 146 with multiple driveways for circulation.
- Ability to fence project for a large tenant and create autonomous environment.

Address: 5803 Old Highway 146

A Project of: TRANSWESTERN DEVELOPMENT COMPANY

Online: transwestern.com

Brian Gammill
Executive Managing Director
713.270.3321
brian.gammill@transwestern.com

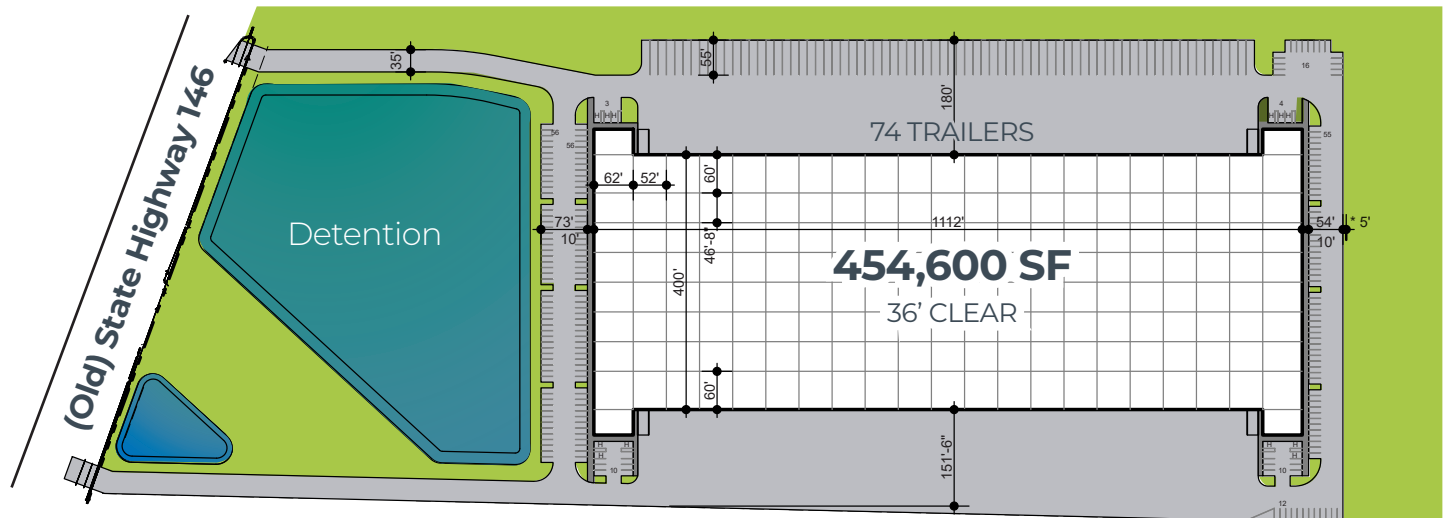
Darryl Noon
Managing Director
713.270.3325
darryl.noon@transwestern.com

Nick Peterson
Managing Director
713.231.1635
nick.peterson@transwestern.com

Ryan Baumgartner
Development Manager
713.304.8878
ryan.baumgartner@transwestern.com

David Duncan
Development Manager
832.748.1190
david.duncan@transwestern.com

The information provided herein was obtained from sources believed reliable; however, Transwestern makes no guarantees, warranties or representations as to the completeness or accuracy thereof. The presentation of this property is submitted subject to errors, omissions, change of price or conditions, prior sale or lease, or withdrawal without notice. Copyright © 2022 Transwestern.



» Property Features

- 60' Speed Bays
- 36' Clear Height
- 127 Dock Doors
- 4 Oversized Ramps (12' x 14')
- ESFR sprinkler System
- Abundant parking
- 180' and 150' Truck Courts
- Ability to Fence Apron
- Built to Suit Office
- 400' Building Depth

Address: 5803 Old Highway 146

A Project of: **TRANSWESTERN** DEVELOPMENT COMPANY

Online: transwestern.com

Brian Gammill
Executive Managing Director
713.270.3321
brian.gammill@transwestern.com

Darryl Noon
Managing Director
 713.270.3325
darryl.noon@transwestern.com

Nick Peterson
Managing Director
 713.231.1635
nick.peterson@transwestern.com

Ryan Baumgartner
Development Manager
713.304.8878
ryan.baumgartner@transwestern.com

David Duncan
Development Manager
832.748.1190
david.duncan@transwestern.com



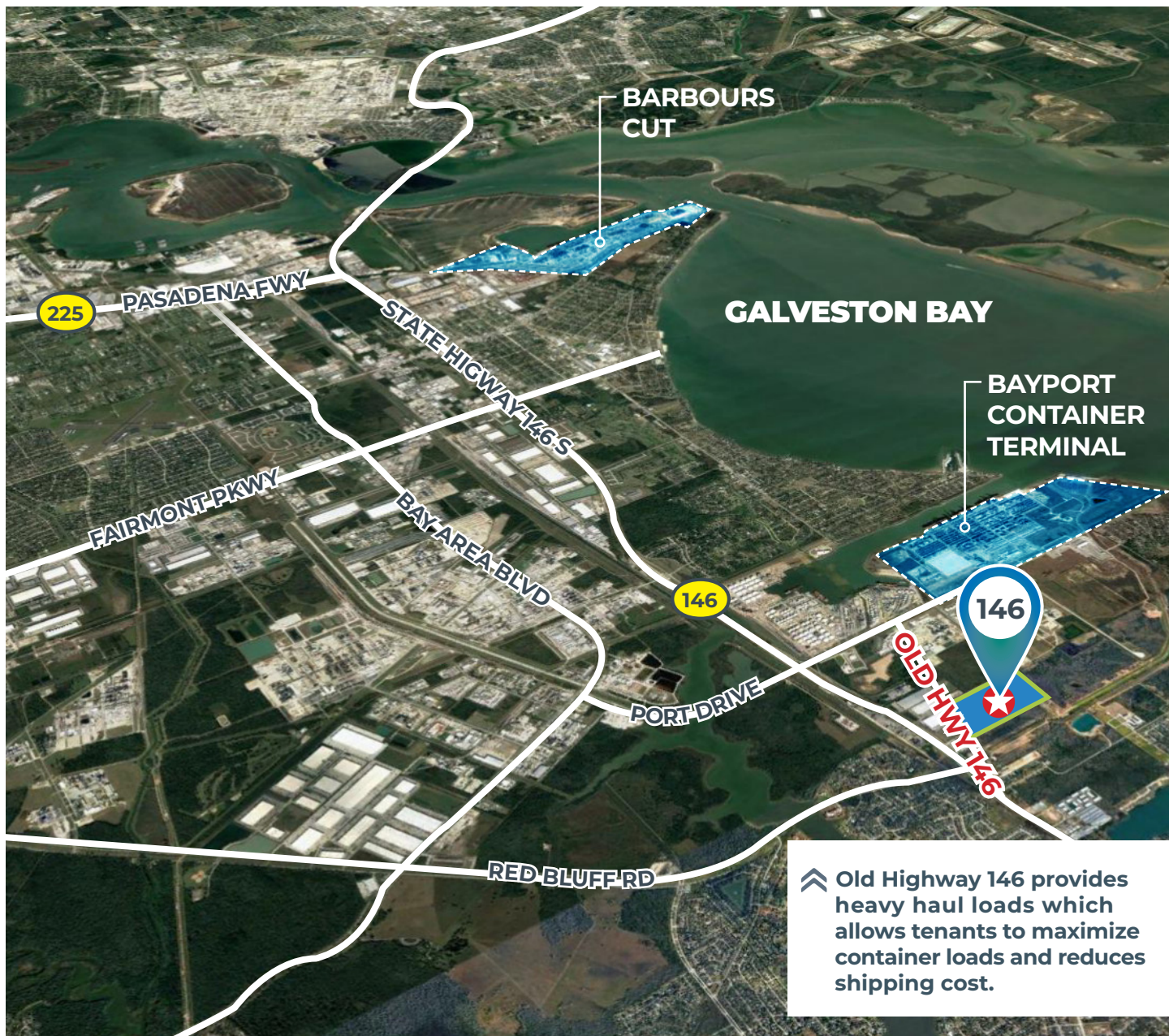
TRANSWESTERN

REAL ESTATE
SERVICES

BAYPORT¹⁴⁶

DISTRIBUTION CENTER

≡ Aerial Map



Address: 5803 Old Highway 146

A Project of: TRANSWESTERN DEVELOPMENT COMPANY

Online: transwestern.com

Brian Gammill
Executive Managing Director
713.270.3321
brian.gammill@transwestern.com

Darryl Noon
Managing Director
713.270.3325
darryl.noon@transwestern.com

Nick Peterson
Managing Director
713.231.1635
nick.peterson@transwestern.com

Ryan Baumgartner
Development Manager
713.304.8878
ryan.baumgartner@transwestern.com

David Duncan
Development Manager
832.748.1190
david.duncan@transwestern.com

The information provided herein was obtained from sources believed reliable; however, Transwestern makes no guarantees, warranties or representations as to the completeness or accuracy thereof. The presentation of this property is submitted subject to errors, omissions, change of price or conditions, prior sale or lease, or withdrawal without notice. Copyright © 2022 Transwestern.