

**OFFICE &
WAREHOUSE**

14,669 SF
FOR LEASE

CLASS A
BUILDING

NORTHWEST
SUBMARKET



TRANSWESTERN

REAL ESTATE
SERVICES

PARK PLACE EIGHT

5353 West Sam Houston Parkway North, Suite 150 - Houston, TX 77041



Availability:

- 14,669 SF Total
- 11,653 SF Office
- 3,016 SF Warehouse

Building Amenities:

- Excellent Beltway visibility and access to Hwy 290, Beltway 8 and I-10
- Strong corporate identity provides a productive working environment
- Tilt-up concrete construction
- All concrete paving

Space Features:

- 14'-6" Average clear height
- Dock high and semi-dock high
- Rear load
- Professional and extensive landscaping



Leasing Information:

Jude Filippone

Vice President
713.270.3318
jude.filippone@transwestern.com

Carter Thurmond

Senior Associate
713.490.3784
carter.thurmond@transwestern.com

Brian Gammill

Managing Director
713.270.3321
brian.gammill@transwestern.com

The information provided herein was obtained from sources believed reliable; however, Transwestern makes no guarantees, warranties or representations as to the completeness of accuracy thereof. The presentation of this property is submitted subject to errors, omissions, change of price or conditions, prior to sale or lease, or withdrawal without notice. Copyright © 2020 Transwestern.

PARK PLACE EIGHT

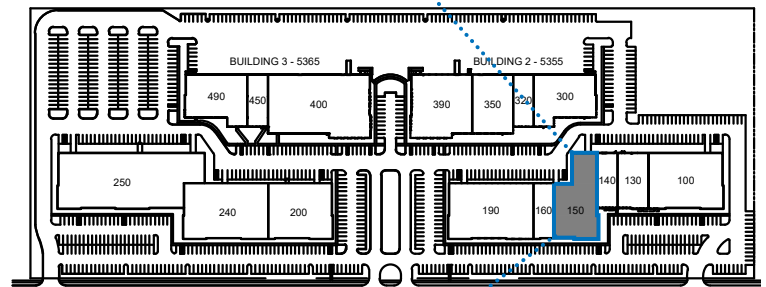
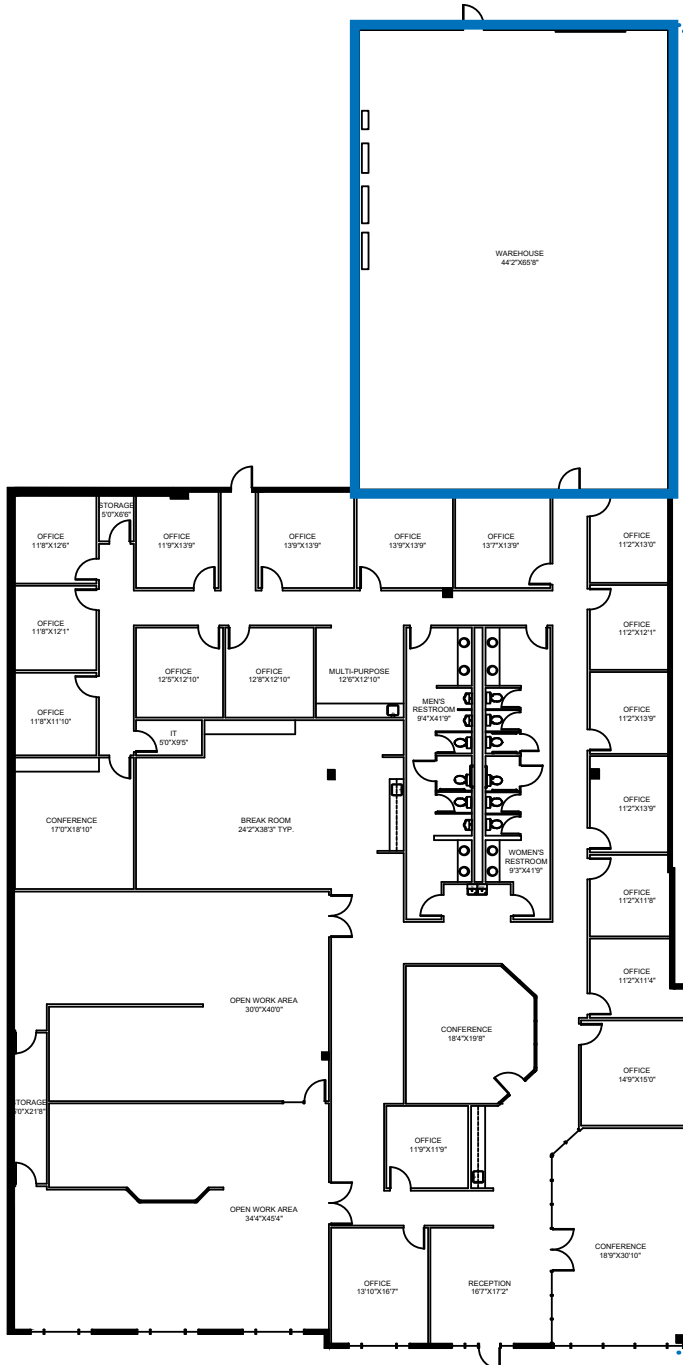
5353 West Sam Houston Parkway North, Suite 150 - Houston, TX 77041



TRANSWESTERN

REAL ESTATE
SERVICES

Warehouse - 3,016 SF



Leasing Information:

Jude Filippone

Vice President
713.270.3318

jude.filippone@transwestern.com

Carter Thurmond

Senior Associate
713.490.3784

carter.thurmond@transwestern.com

Brian Gammill

Managing Director
713.270.3321

brian.gammill@transwestern.com

The information provided herein was obtained from sources believed reliable; however, Transwestern makes no guarantees, warranties or representations as to the completeness of accuracy thereof. The presentation of this property is submitted subject to errors, omissions, change of price or conditions, prior to sale or lease, or withdrawal without notice. Copyright © 2020 Transwestern.