



TRANSWESTERN

REAL ESTATE  
SERVICES



# MAPLE GROVE EXECUTIVE PLAZA

MAPLE GROVE | OFFICE SPACE FOR LEASE

BRYAN BELTRAND CCIM | 612.359.1616  
bryan.beltrand@transwestern.com



# PROPERTY OVERVIEW

## Maple Grove Business Plaza

**TRANSWESTERN**

REAL ESTATE  
SERVICES



### PROPERTY DETAILS

**Address:** 7767 Elm Creek Blvd | Maple Grove, MN

**Building Size:** 58,500 sf

**# of Floors:** 3

**Year Built:** 1998

**Parking:** Ample surface space + climate controlled underground parking



### FOR LEASE

**Suite 100:** 5,359 rsf

**Suite 207:** 3,455 rsf

**Suite 208:** 732 rsf

**Suite 220:** 4,704 rsf

**Net Rental Rates:** \$14.00 psf



### HIGHLIGHTS

- Class A building with great exposure to I-94
- Bank on-site
- Key-card access
- Located near many area amenities



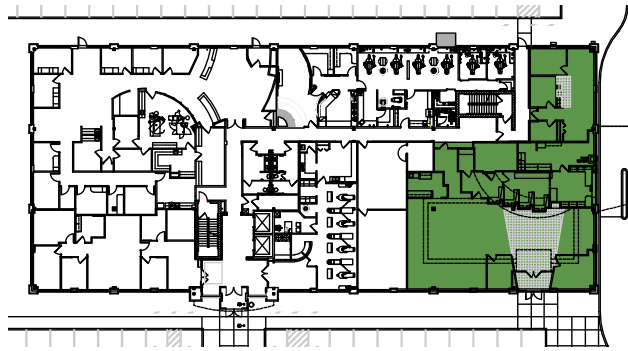
### LEASING INFORMATION:

**Bryan Beltrand** | 612.359.1616 | [bryan.beltrand@transwestern.com](mailto:bryan.beltrand@transwestern.com)

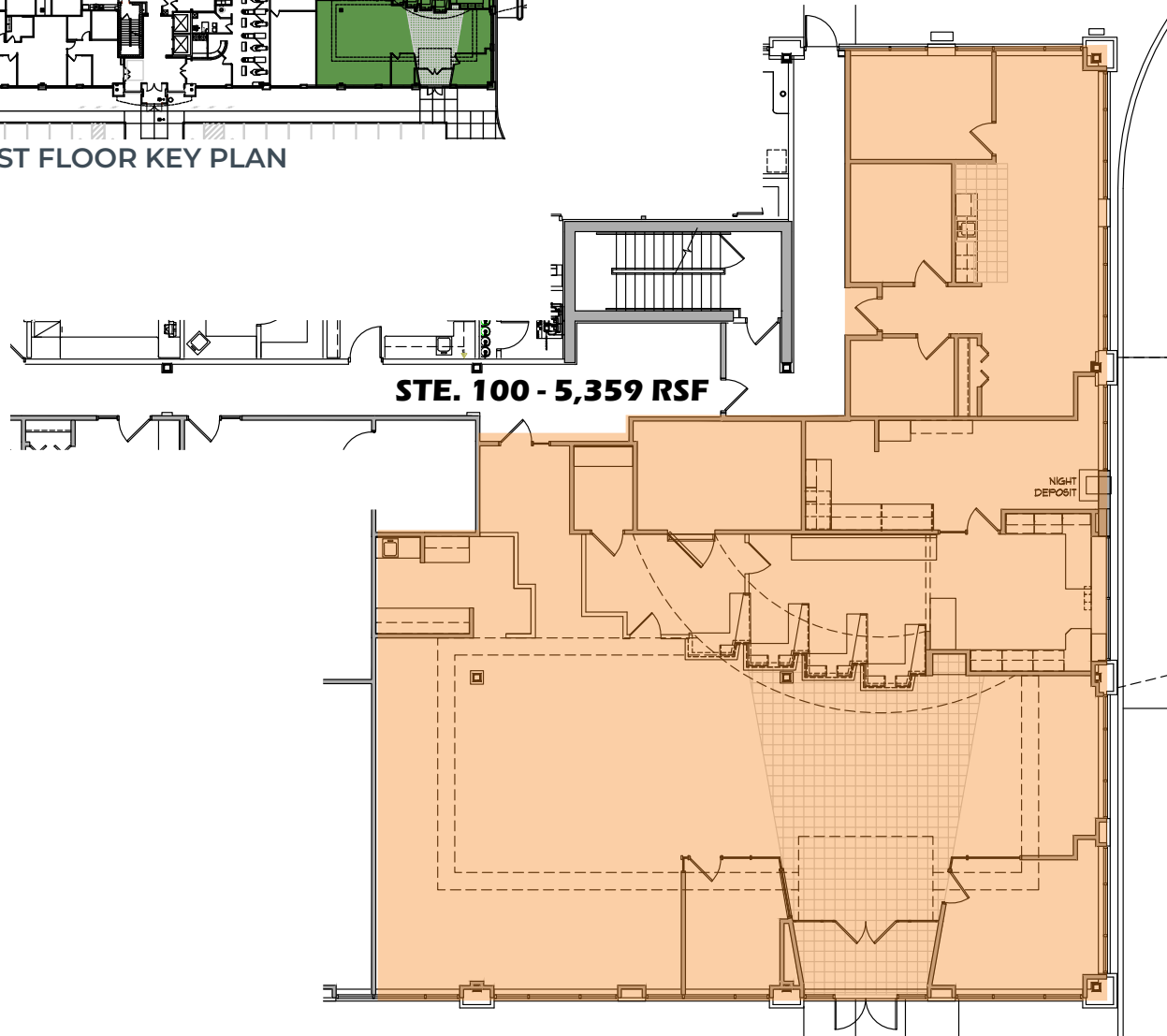
The information provided herein was obtained from sources believed reliable; however, Transwestern makes no guarantees, warranties or representations as to the completeness of accuracy thereof. The presentation of this property is submitted subject to errors, omissions, change of price or conditions, prior to sale or lease, or withdrawal without notice. Copyright © 2020 Transwestern.

# FLOOR PLAN | FIRST FLOOR

Maple Grove Executive Plaza



FIRST FLOOR KEY PLAN



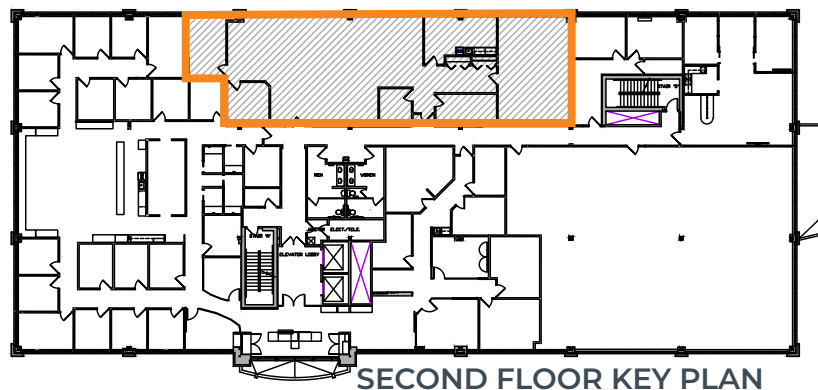
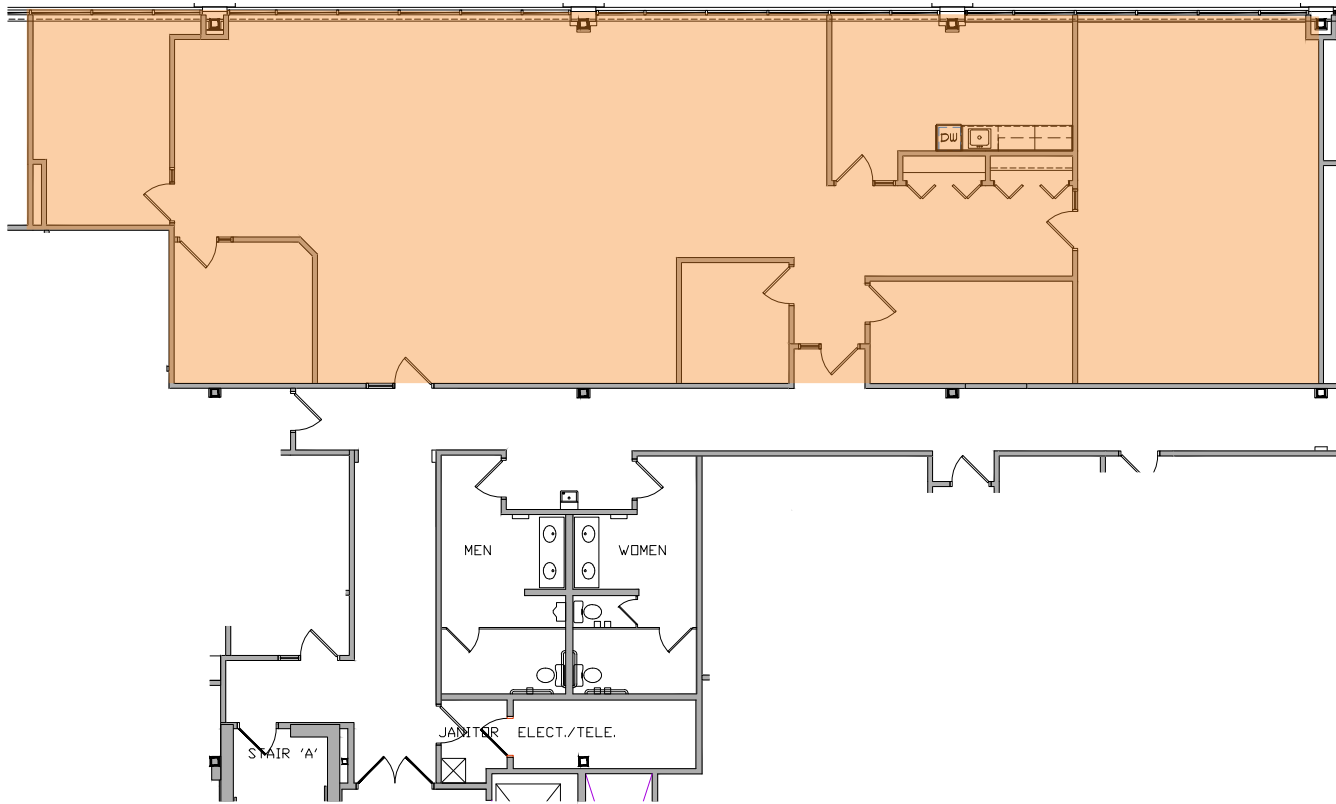
**SUITE 100**  
5,359 rsf

**Bryan Beltrand** | 612.359.1616  
bryan.beltrand@transwestern.com



# FLOOR PLAN | SECOND FLOOR

Maple Grove Executive Plaza



**SUITE 207**  
3,455 rsf

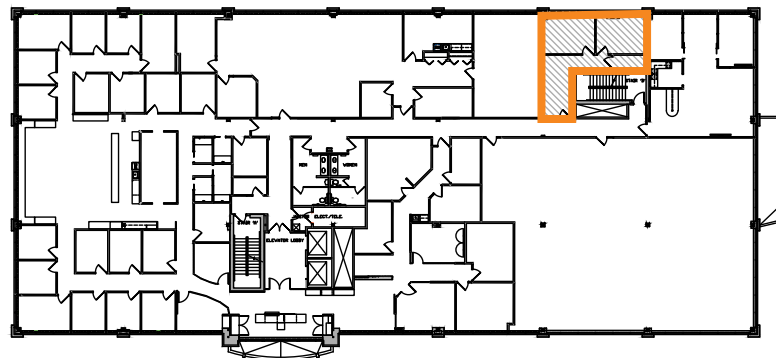
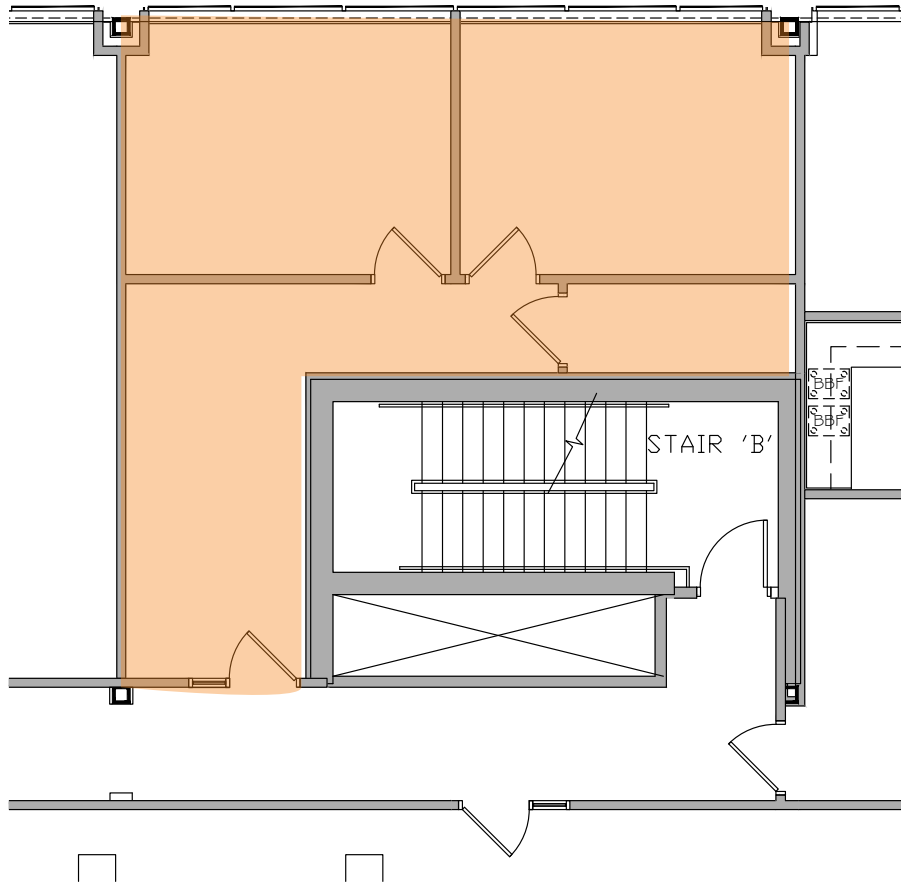
**Bryan Beltrand** | 612.359.1616  
bryan.beltrand@transwestern.com





# FLOOR PLAN | SECOND FLOOR

Maple Grove Executive Plaza



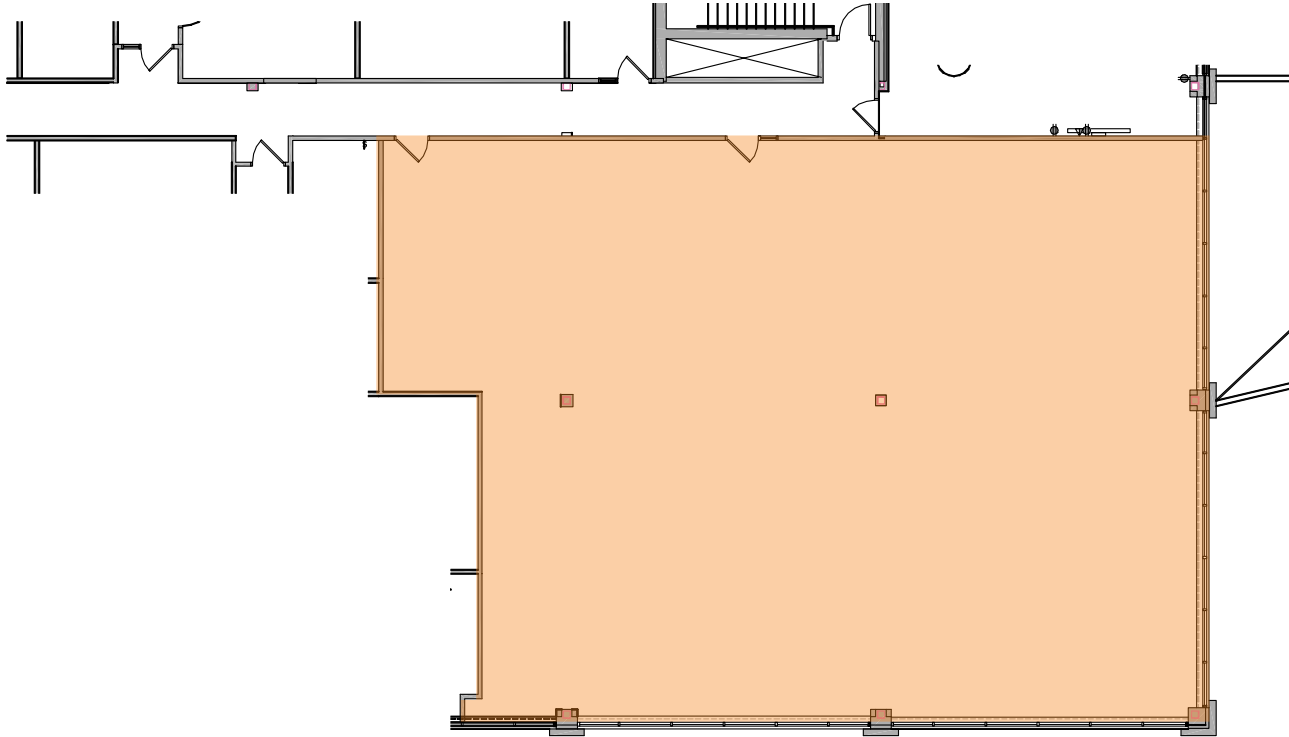
**SUITE 208**  
732 rsf

**Bryan Beltrand** | 612.359.1616  
bryan.beltrand@transwestern.com

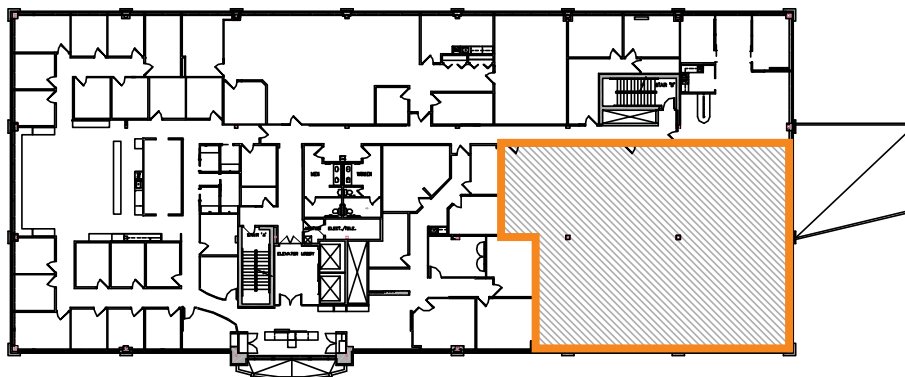


# FLOOR PLAN | SECOND FLOOR

Maple Grove Executive Plaza



SECOND FLOOR KEY PLAN:



**SUITE 220**  
4,704 rsf

**Bryan Beltrand** | 612.359.1616  
bryan.beltrand@transwestern.com

