



# Central Green Corporate Center

16501 Central Green Blvd. Suite 100, Houston, TX 77032

---



**48,458 sq ft**  
Available space



**28'**  
Clear height



**End-Cap**  
Space



**Now**  
Availability Date



# Central Green Corporate Center

## Property features and offered space

- A state-of-the-art distribution building with 48,458 sf available in Houston, TX
- Outstanding visibility to Hardy Toll Rd.
- Located in the heart of North Houston, with direct access to Hardy Toll Road and close proximity to IAH Airport



**48,458**  
Available space



**1,620**  
Office space



**Now**  
Availability Date



**200'**  
Shared truck court



**Dock-High**  
Rear - Loading



**40' x 50'**  
Column grid



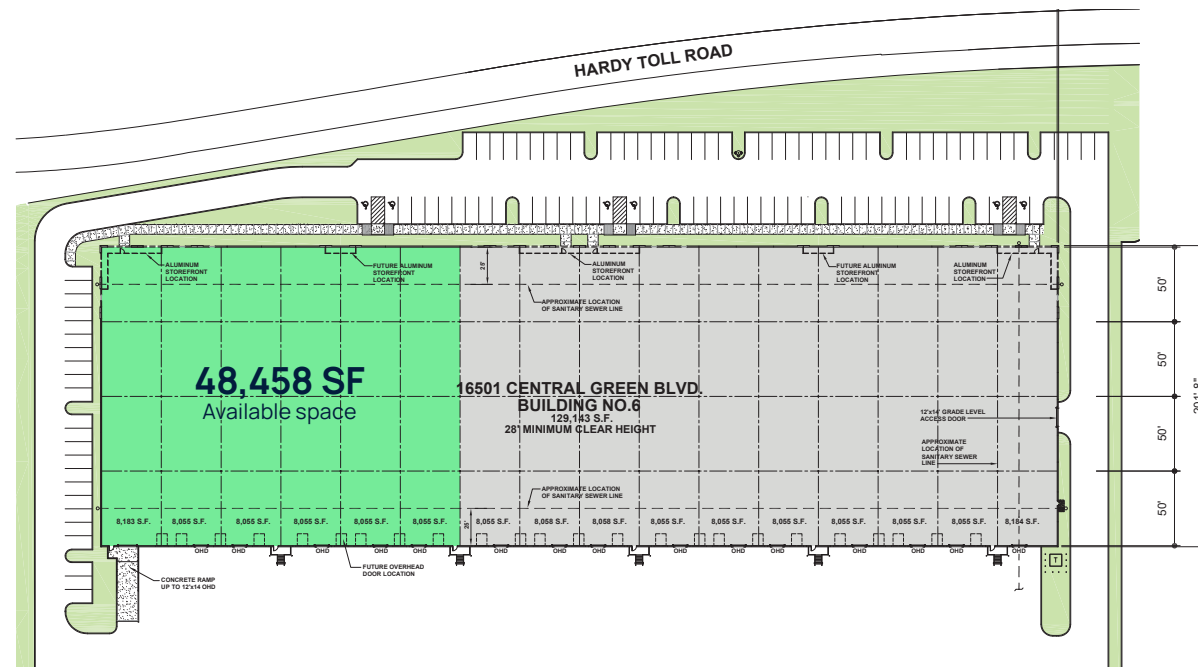
**ESFR**  
Fire sprinkler



**LED**  
Lighting



**28'**  
Clear height



# Available space

and technical specification



**48,458**  
Available space



**1,620**  
Office space



**Dock-High**  
Rear - Loading



**1 (12' x 14')**  
Ramp Door



**8 (9' x 10')**  
Dock-High Doors



**200'**  
Shared truck court



**2 (35,000 lb)**  
Pit Levelers



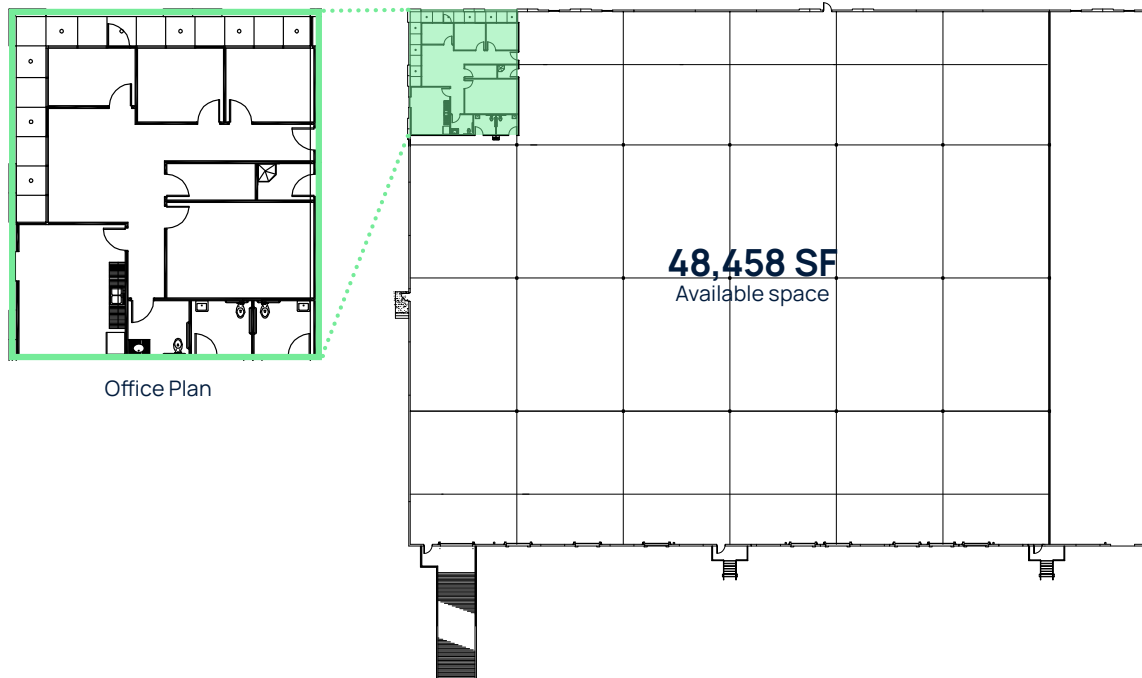
**6**  
Edge-of-Dock  
Pit Levelers



**28'**  
Clear height

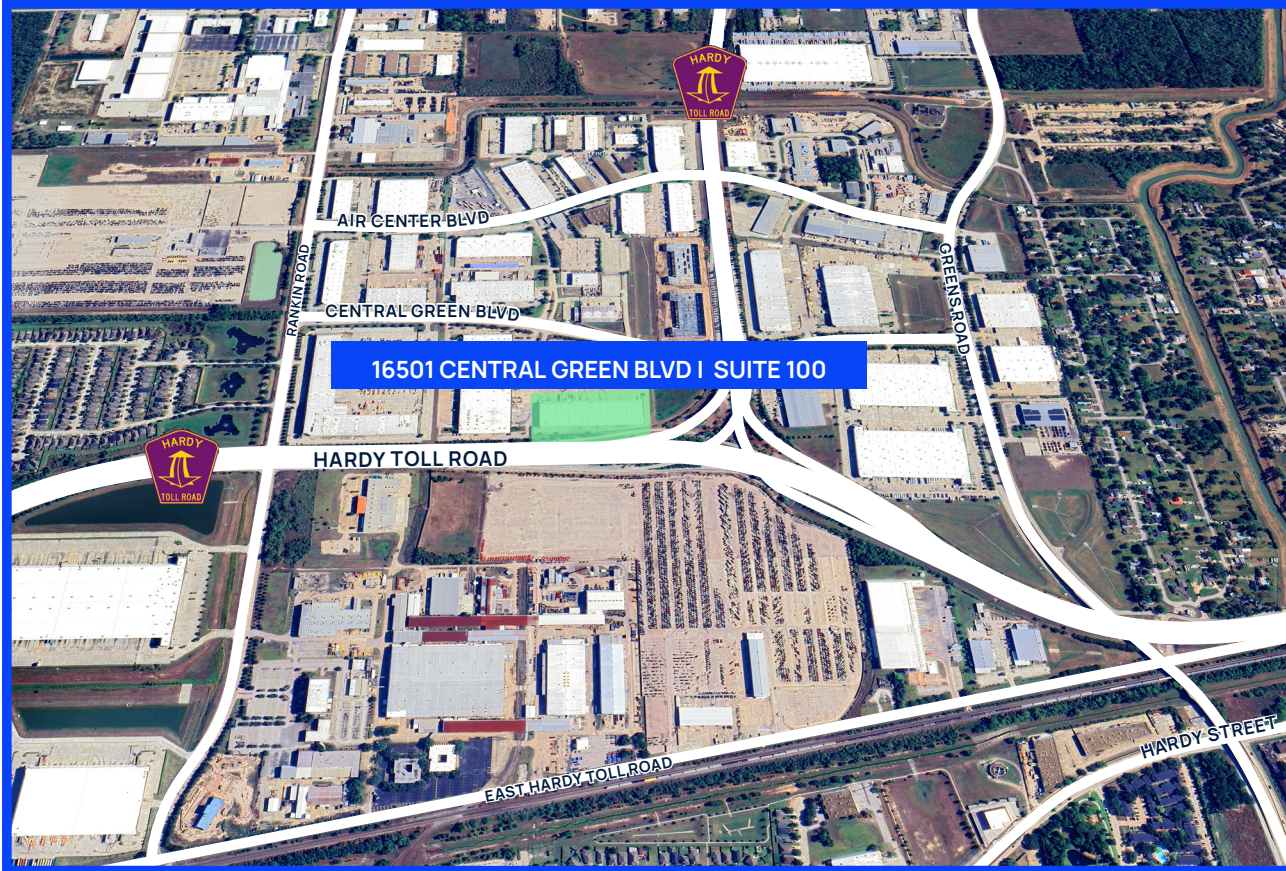


**200 Amps**  
Power






Office Plan

**48,458 SF**  
Available space



## Distances

		
Hardy Toll Road	0 miles	1 min.
IAH Airport	3 miles	8 min.
Beltway 8	4 miles	9 mins.
I-45	5 miles	10 mins
Port of Houston	16 miles	23 min.
Hobby Airport	27 miles	37 min.
Bayport Container Term.	44 miles	50 min.

# Proven track record

of Marq Logistics



Marq Logistics is a global leader in the development and operation of modern logistics facilities and manages a portfolio of approximately 2,000 properties totaling more than 645 million square feet. With a mission to deliver institutional-quality logistics facilities and a consistent, best-in-class experience to customers around the world, Marq's highly specialized and dedicated team provides a powerful combination of global scale with local expertise.

Learn more about Marq at [www.marqlogistics.com](http://www.marqlogistics.com), and view our current properties at [us.glp.com](http://us.glp.com).

## Darryl Noon

Executive Managing Director

713.270.3325

[darryl.noon@transwestern.com](mailto:darryl.noon@transwestern.com)

## Brian Gammill

Executive Managing Director

713.270.3321

[brian.gammill@transwestern.com](mailto:brian.gammill@transwestern.com)

