

7205 Hudson Village Creek Rd

Kennedale, TX 76060

LAND FOR SALE

24.61 Acres

Industrial Zoning

Quick Access to Business Hwy 287 & I-20



Lyndon Todd

Vice President
817-528-6680

lyndon.todd@transwestern.com

Charlie McCollum

Associate
404-654-7906

charlie.mccollum@transwestern.com

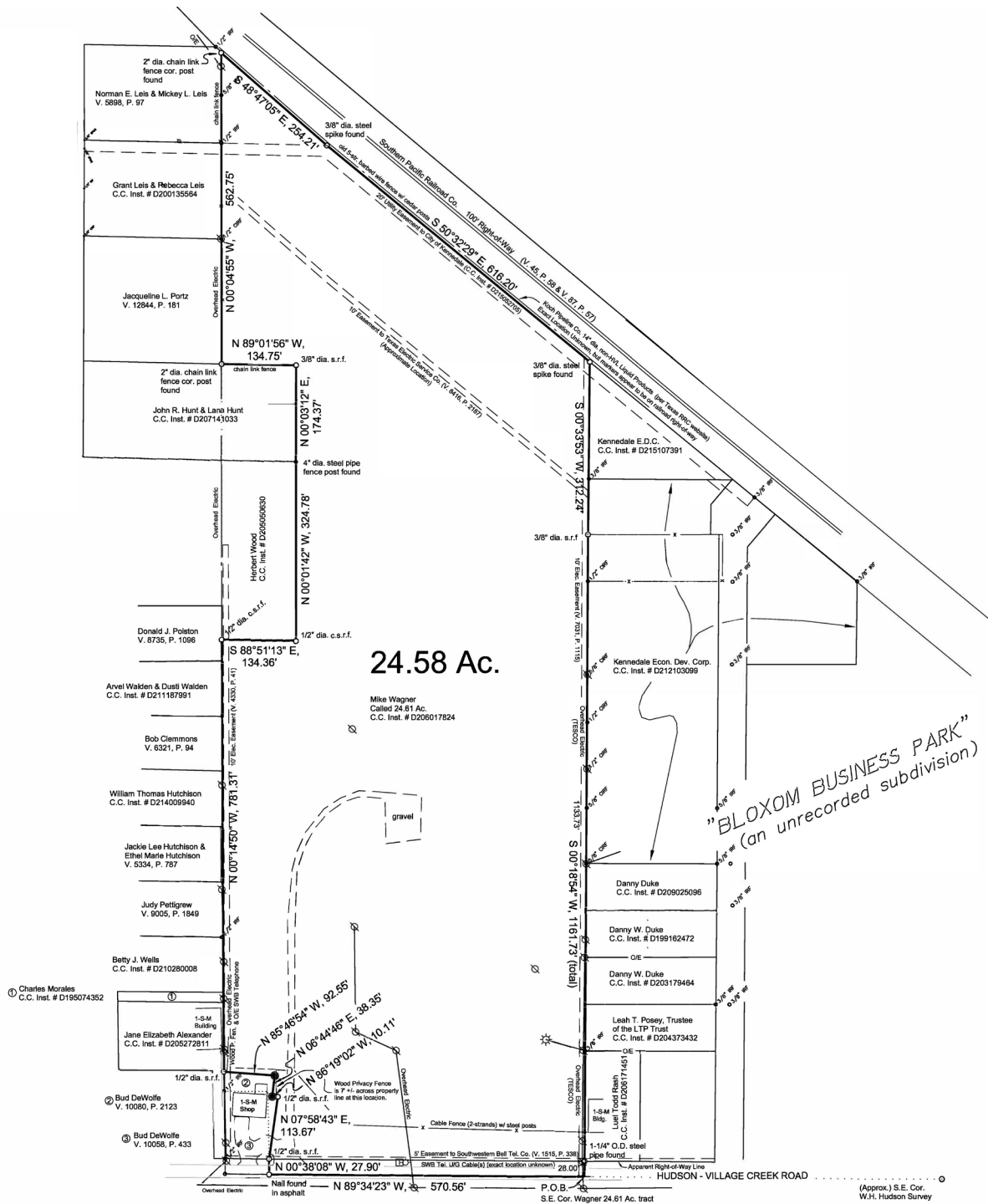
Wythe Roberts

Associate
903-315-0328

wythe.roberts@transwestern.com

Survey

7205 HUDSON VILLAGE CREEK RD | KENNEDALE, TX 76060



"BLOXOM BUSINESS PARK"
(an unrecorded subdivision)

T Transwestern

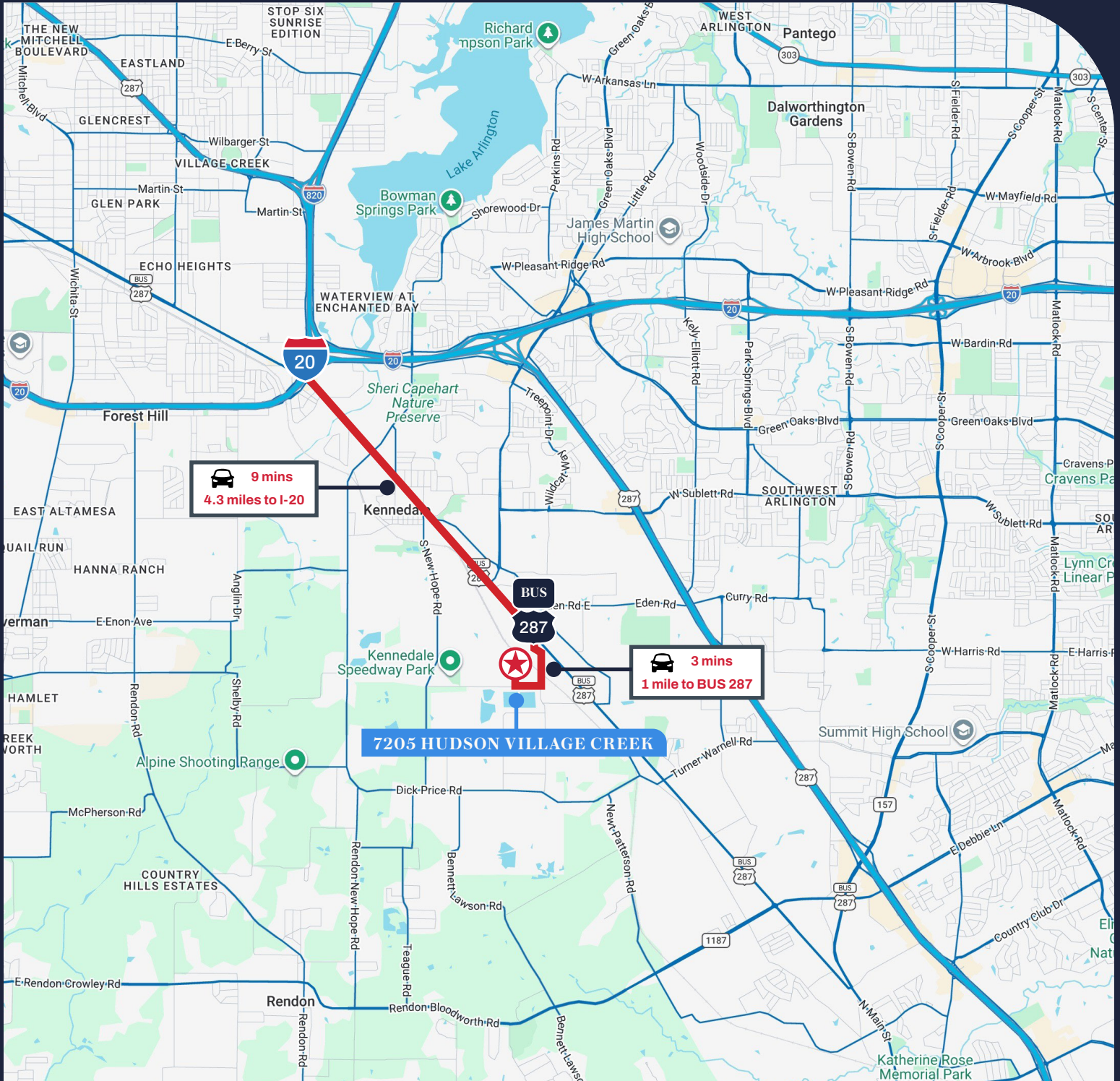
Lyndon Todd
Vice President
817-528-6680
lyndon.todd@transwestern.com

Charlie McCollum
Associate
404-654-7906
charlie.mccollum@transwestern.com

Wythe Roberts
Associate
903-315-0328
wythe.roberts@transwestern.com

Map

7205 HUDSON VILLAGE CREEK RD | KENNEDALE, TX 76060



 Transwestern

Lyndon Todd

Vice President
817-528-6680

lyndon.todd@transwestern.com

Charlie McCollum

Associate
404-654-7906

charlie.mccollum@transwestern.com

Wythe Roberts

Associate
903-315-0328

wythe.roberts@transwestern.com