

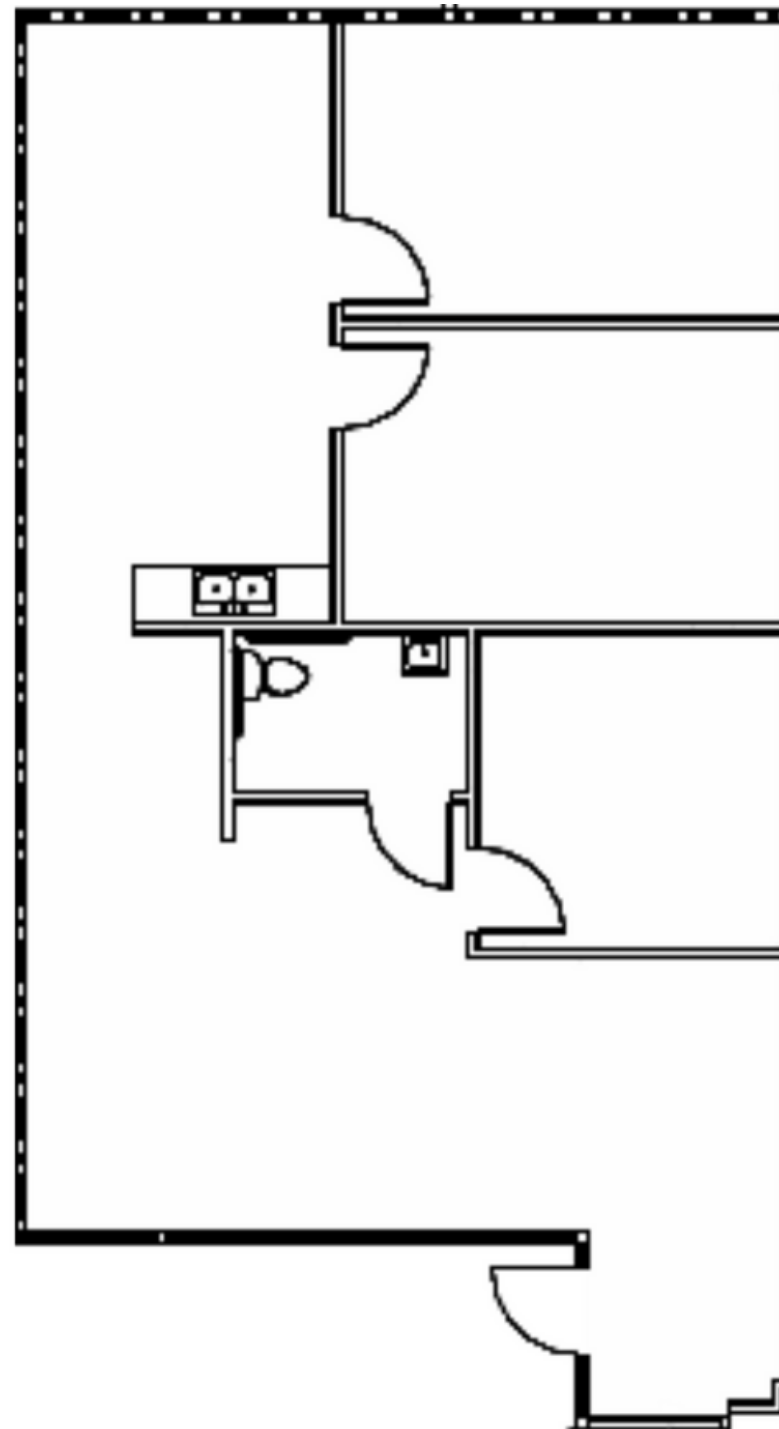


HURRICANE SHOALS MEDICAL PAVILION
1130 HURRICANE SHOALS RD NE, LAWRENCEVILLE, GA 30043

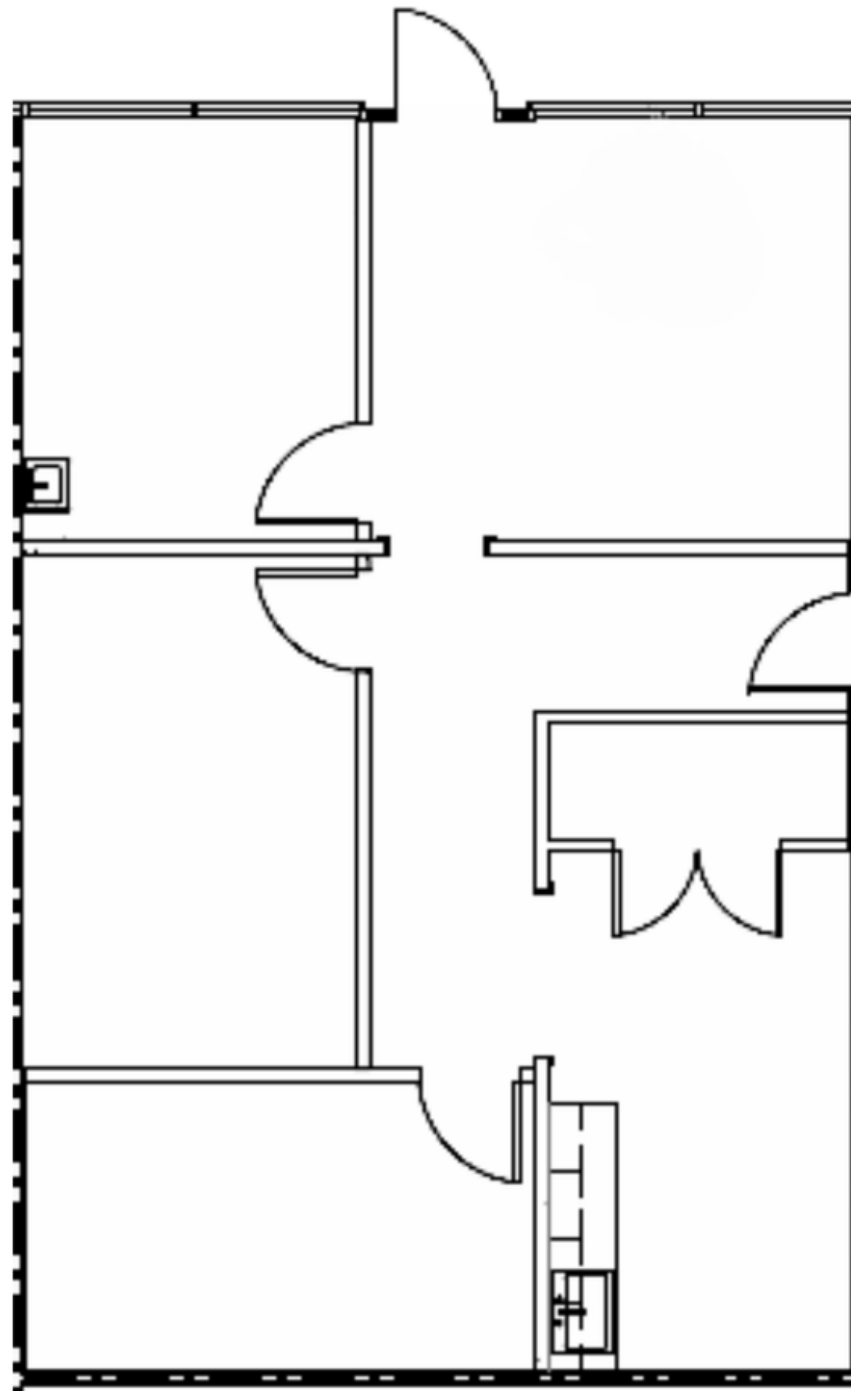
AVAILABLE FLOORPLANS

SUITE 1200

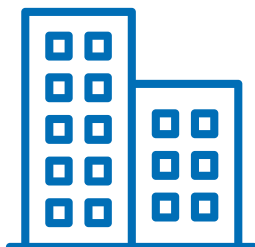
1,352 RSF



SUITE 2600
1,257 RSF



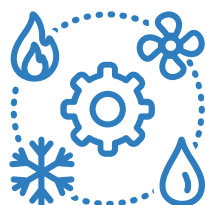
PROPERTY HIGHLIGHTS



44,987 SF Class B multi-tenant office building



Situated in North Gwinnett, with direct access to Highway 316



Fully equipped with 100% HVAC coverage, ensuring year-round comfort.



Ample Parking with a ratio of 5.49 spaces per 1,000 SF leased



HURRICANE SHOALS MEDICAL PAVILION

100



150



400



600



700



800



1100



1200



CONTACT US



STEVE HALL

404.842.6560

steve.hall@transwestern.com



JOHN V. LOPEZ, CCIM, RPA

404.842.6562

john.lopez@transwestern.com



BO STUART

404.842.6556

bo.stuart@transwestern.com



MARSH HAZLEHURST

404.842.6574

marsh.hazlehurst@transwestern.com

