

1333 OAK LAWN AVE, DALLAS, TX 75207



THE CAPITAL

DESIGN DISTRICT

OFFICE IN THE
HEART OF
THE DESIGN
DISTRICT.



DELIVERED 2024

10

STORIES
5 STORIES OF
CLASS A OFFICE

3/1,000

PARKING RATIO

125,863

RENTABLE SQUARE FEET
OF CLASS A OFFICE

1

TERRACE
TOTALING 1,877 SF

4,976

SQUARE FEET
RESTAURANT WITH PATIO

8,822

SQUARE FEET
AMENITY SPACE



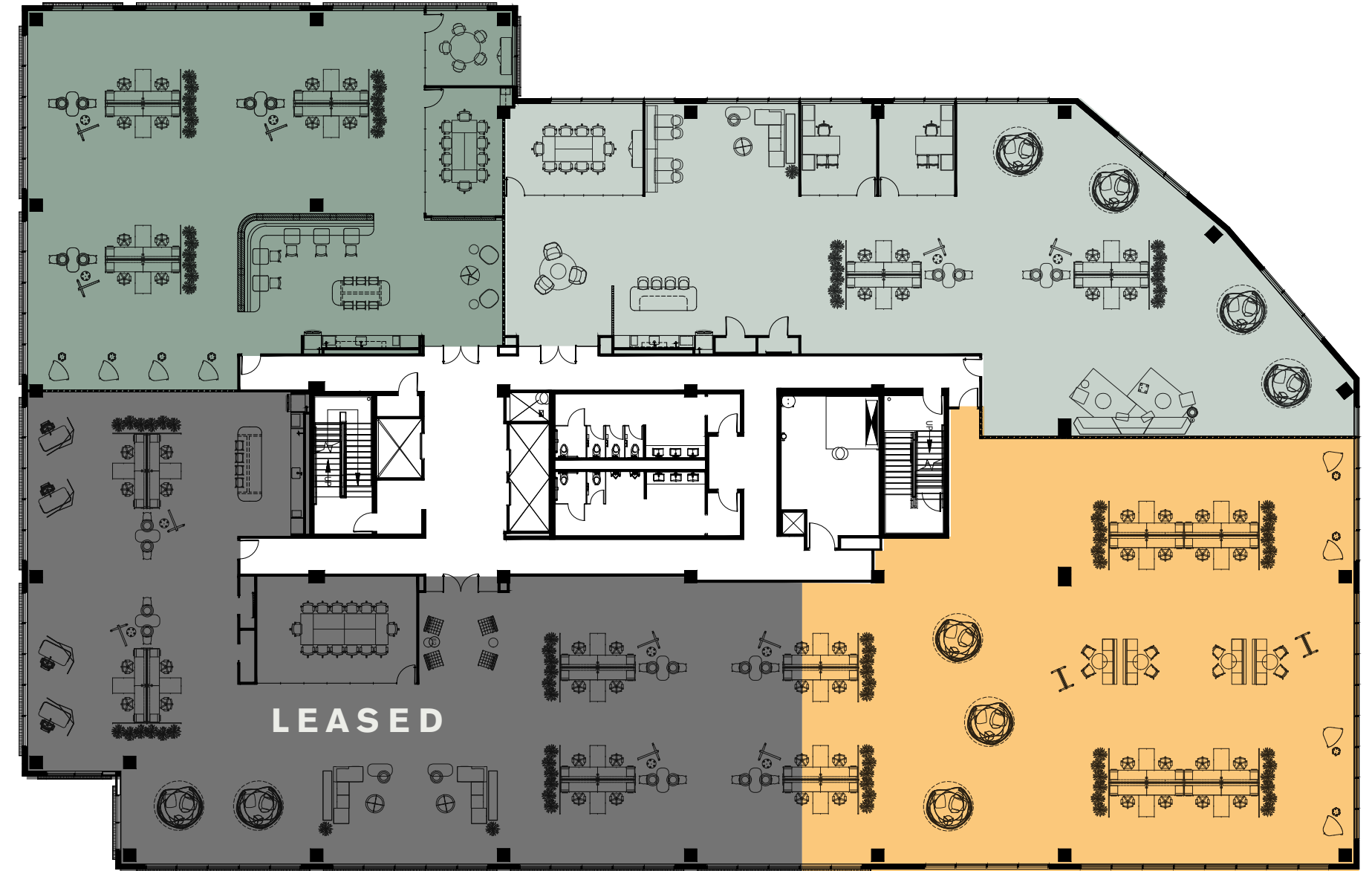
SPEC SUITES

SPEC SUITES AVAILABLE FROM 6,090 - 20,132 RSF

 WHITEBOX
SUITE 650
6,782 SF

 SPEC
SUITE 675
7,260 SF

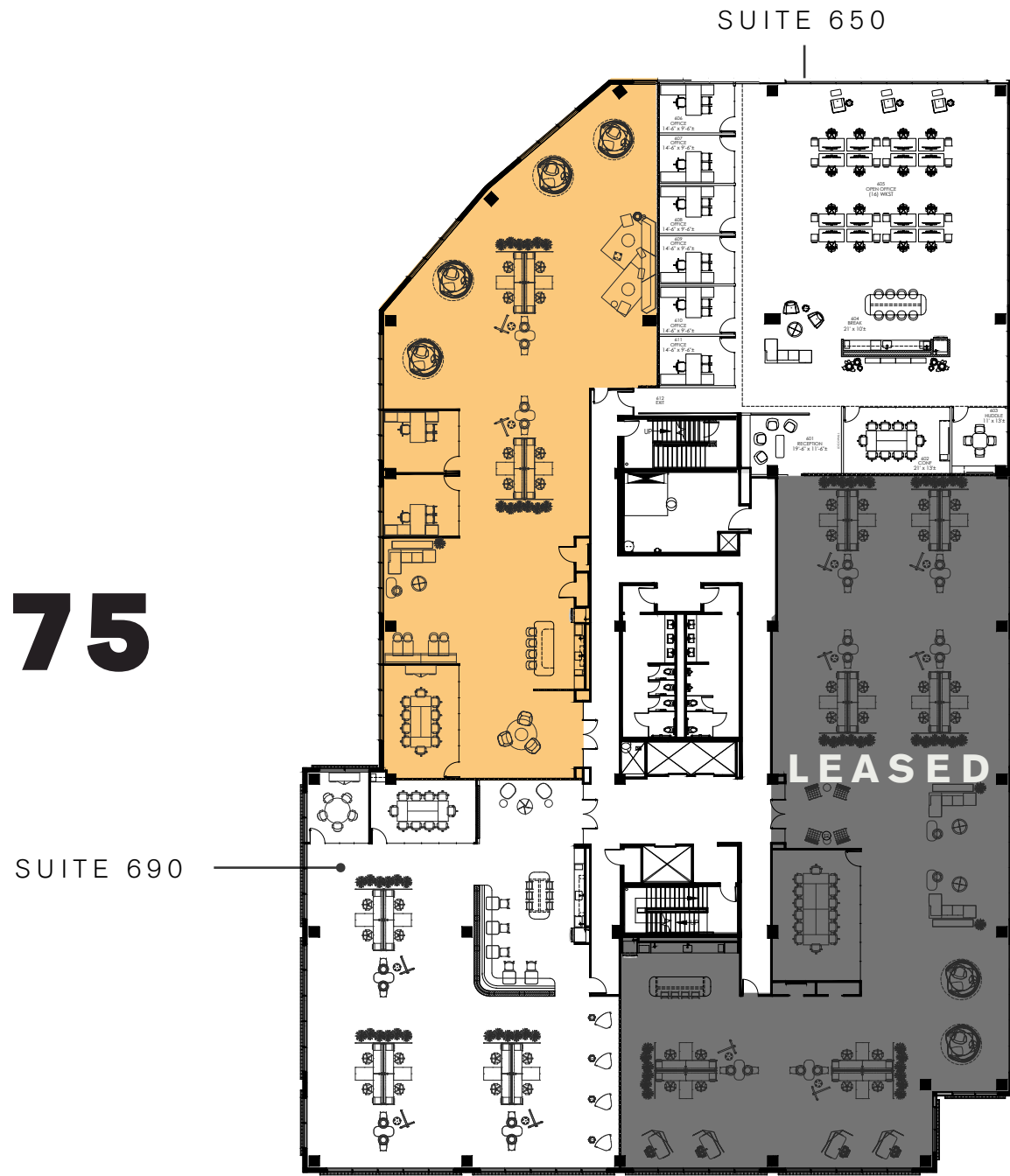
 SPEC
SUITE 690
6,090 SF



SPEC SUITE

SUITE 675

7,260 SF



SUITE 675



SUITE 675



SUITE 675



SUITE 675



SUITE 675

SPEC SUITES

SUITE 690

6,090 SF



SUITE 690



SUITE 690



SUITE 690

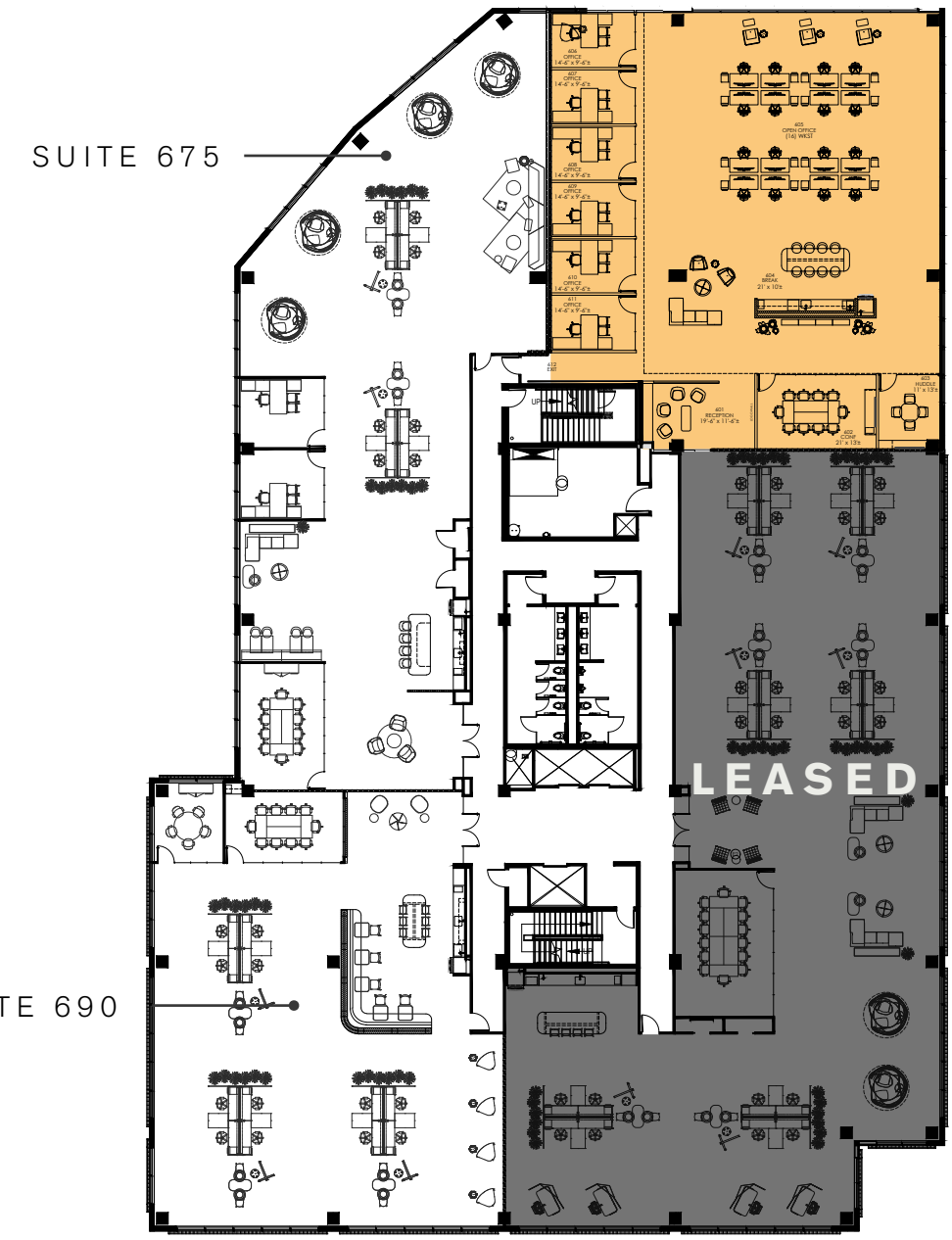


SUITE 690



SUITE 690

CONCEPT PLAN



SUITE 650

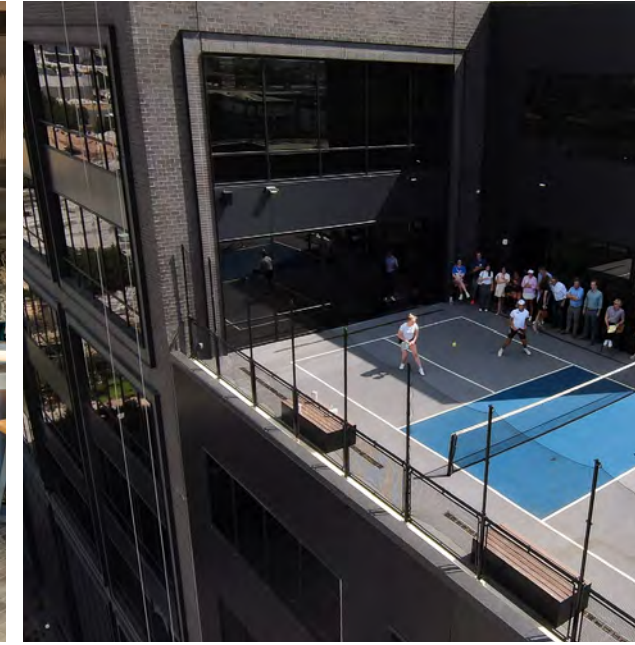
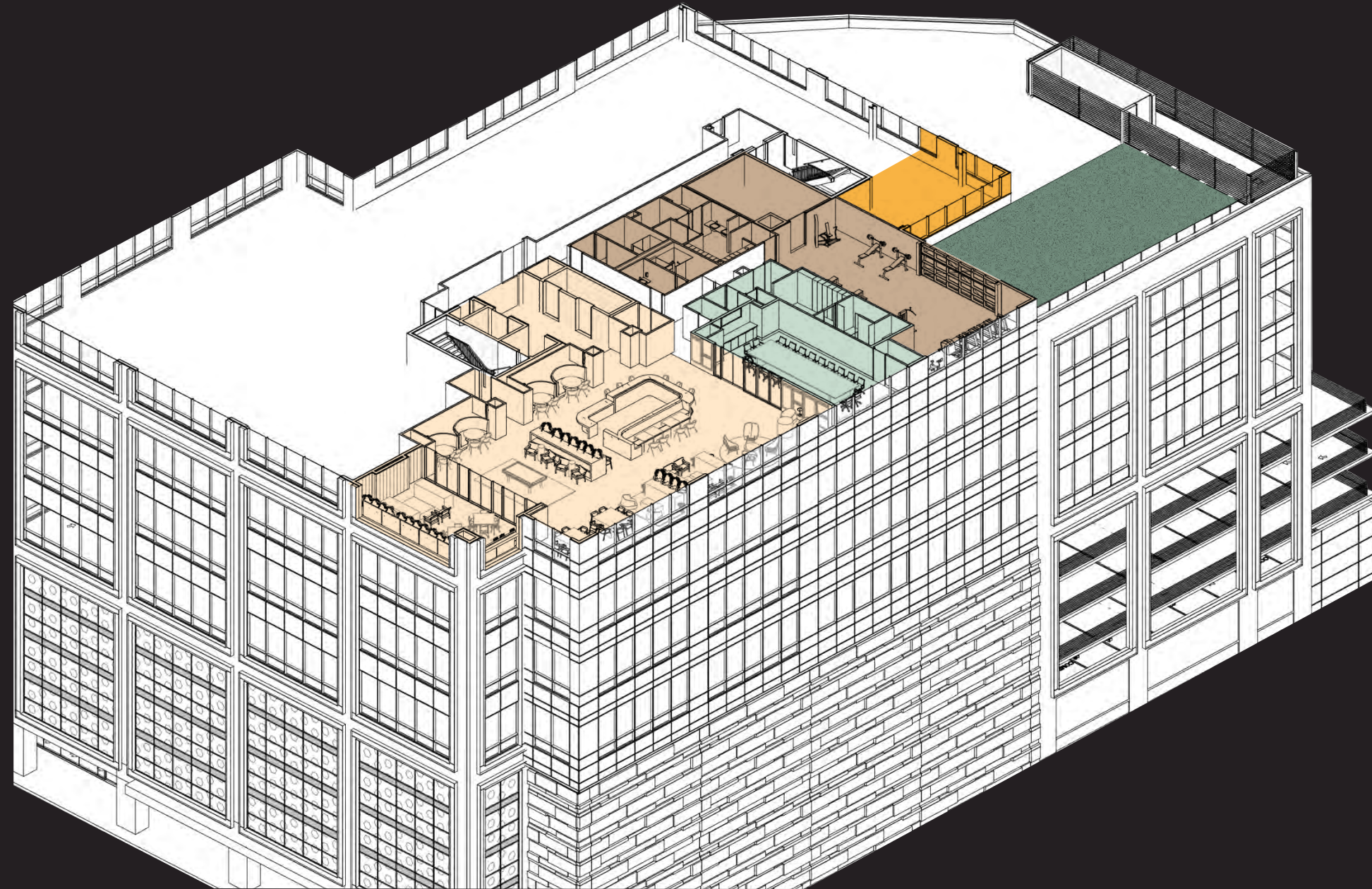
6,782 SF



SUITE 650

NEXT LEVEL AMENITIES.

- COMMUNITY LOUNGE
- FITNESS + LOCKER ROOMS
- CONFERENCE
- PICKLEBALL COURT
- TENANT SPACE
- GOLF SIMULATOR



DESIGN DISTRICT REDEVELOPMENT

THE SEAM

Located directly across the street from The Capital, The Seam is a unique 160,000 SF redevelopment project that will transform a 1970s retail plaza into a sophisticated open-air retail and dining destination.

The Seam will undergo a multi-million dollar redevelopment, transforming the district into a sophisticated retail destination with a well-crafted merchandise mix that celebrates the unique energy of the Design District.



OPENING FALL 2026



CHEF-DRIVEN
DINING



CONTEMPORARY
FASHION



LUSH OUTDOOR
SETTING



LIFESTYLE
DESTINATION



EXPERIENCE WORK IN A NEW LIGHT.

FOR LEASING INFORMATION

PAUL WITTORF

214.446.4512
paul.wittorf@transwestern.com

KIM BROOKS

972.361.1122
kim.brooks@transwestern.com

LANEY DELIN

214.237.5020
laney.delin@transwestern.com

COLLIN BURWINKEL

972.774.2531
collin.burwinkel@transwestern.com

OWNED BY:



LEASED BY:



Transwestern

THECAPITALDD.COM



THE CAPITAL
DESIGN DISTRICT

1333 OAK LAWN AVE, DALLAS, TX 75207