



TRANSWESTERN

REAL ESTATE
SERVICES



RETAIL SPACE FOR LEASE

YORKDALE SHOPPES

SOUTHDALe TRADE AREA

JANET OLSON | 612.359.1681
janet.olson@transwestern.com

OVERVIEW



AVAILABLE FOR LEASE

- 1,090 SF Space 6807F
- 2,162 SF Space 6815
- 1,430 SF Space 6805C Available May 1, 2023



2022 EST CAM/TAX

- CAM/Insurance \$ 4.10 psf
- Property Taxes \$13.61 psf
- TOTAL: \$17.71 psf



DEMOGRAPHICS

	1 Mile	3 Mile	5 Mile
Population	17,016	121,902	303,862
Daytime Population	25,510	159,704	368,671
Median HH Income	\$58,747	\$76,562	\$70,943
Average HH Income	\$84,921	\$111,822	\$102,397

*Sources: ESRI 2022 est & MN Dept of Transportation 2021 Study avgs are per day total cars



TRAFFIC COUNTS

- 20,348 vpd - York Avenue
- 14,588 vpd - 66th Street



HIGHLIGHTS

Anchored by Cub Foods and located across from Southdale Mall at a signalized intersection, Yorkdale Shoppes is a high traffic center perfect for retailers and service providers.

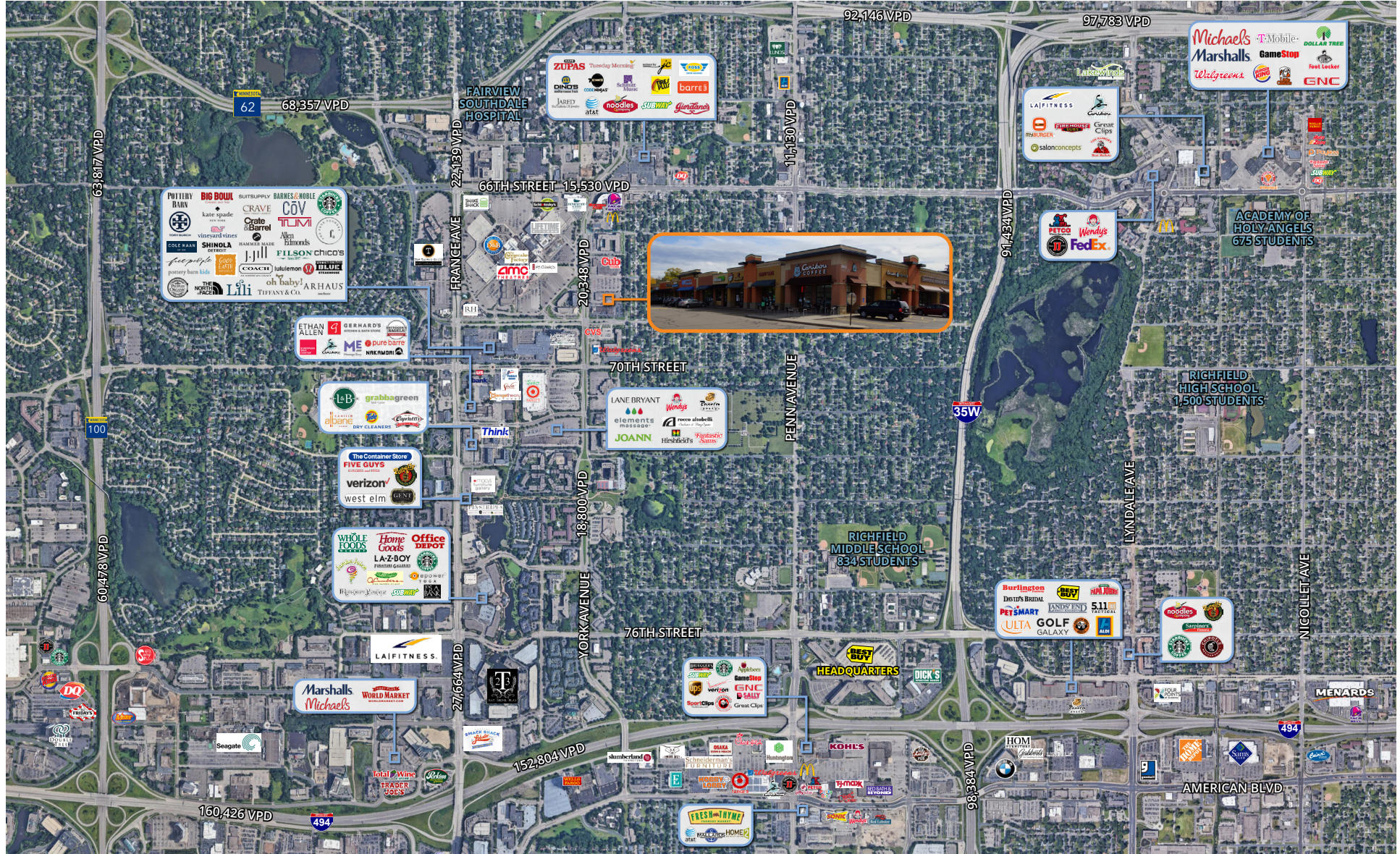


TENANTS

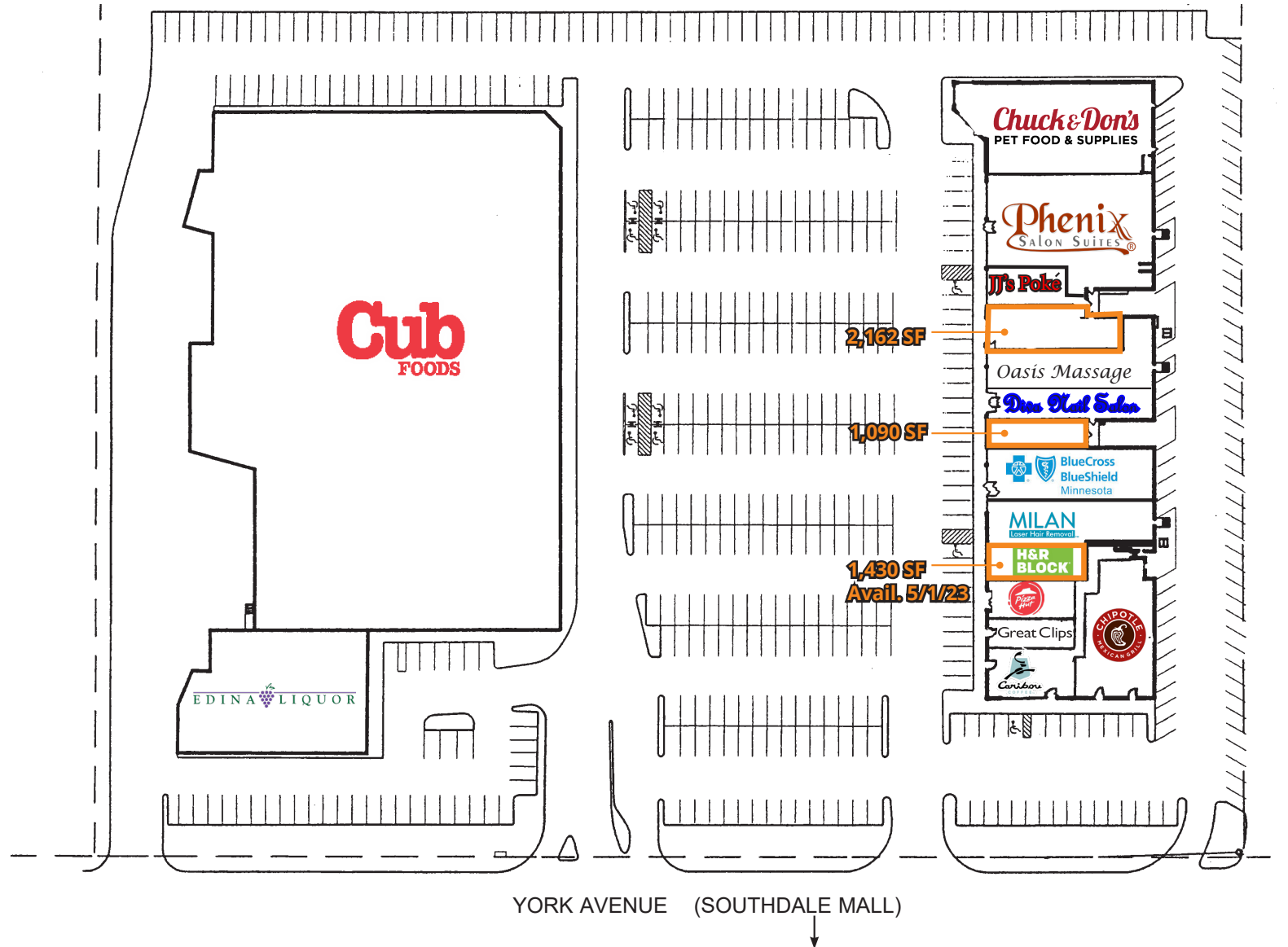


AREA TENANTS

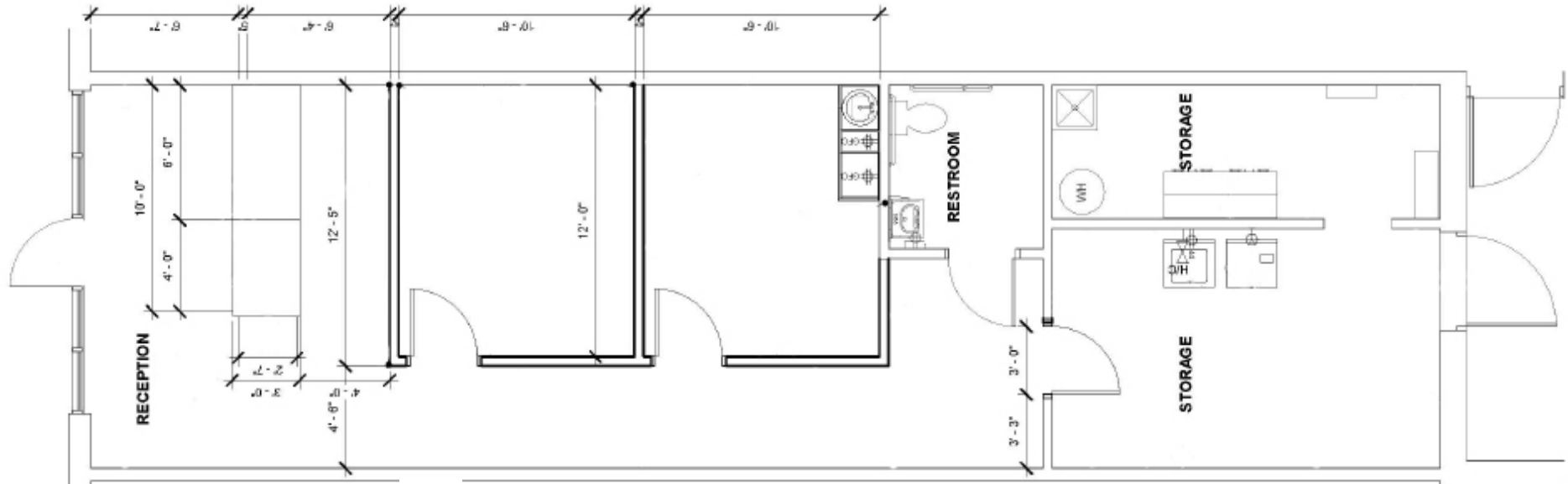




OVERALL SITE PLAN



SITE PLAN - 1,090 SF



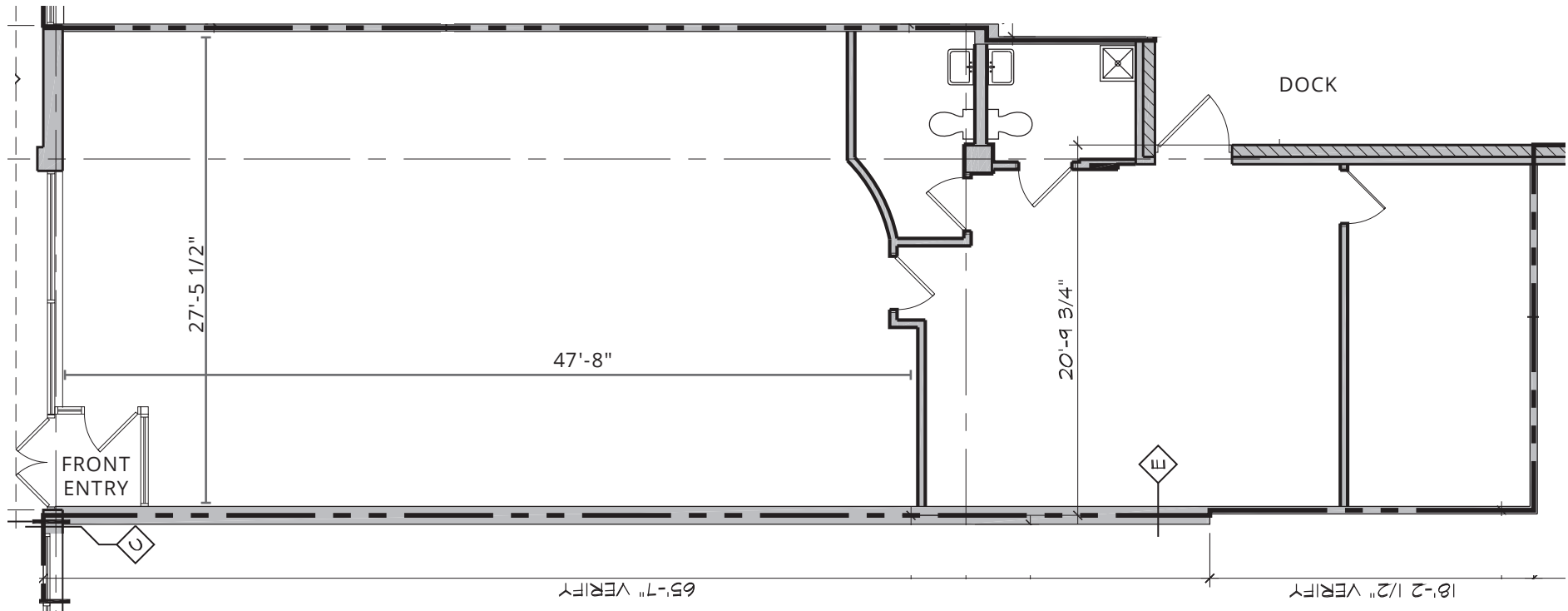
The information provided herein was obtained from sources believed reliable; however, Transwestern makes no guarantees, warranties or representations as to the completeness or accuracy thereof. The presentation of this property is submitted subject to errors, omissions, change of price or conditions, prior sale or lease, or withdrawal without notice. Copyright © 2020 Transwestern.

Janet Olson 612.359.1681 | janet.olson@transwestern.com

PHOTOS - 1,090 SF



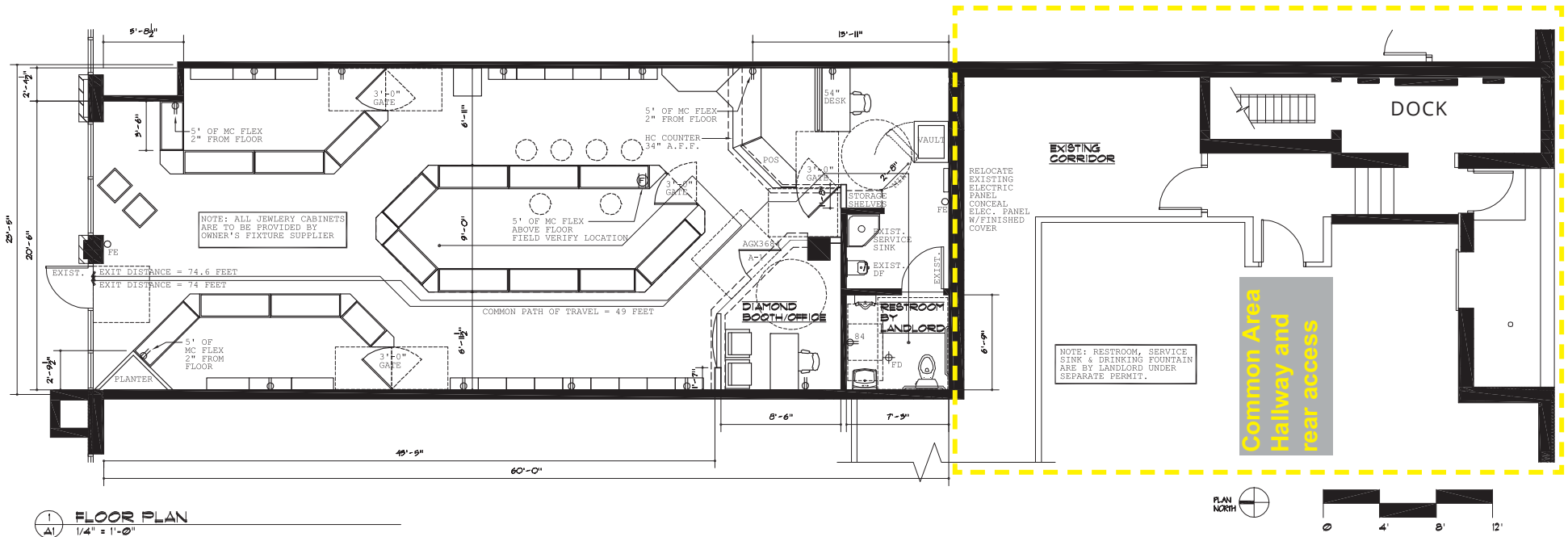
SITE PLAN - 2,162 SF



PHOTOS - 2,162 SF



SITE PLAN - 1,430 SF



PHOTOS - 1,430 SF

