

OFFICE SPACE FOR SUBLEASE

CENTERPOINT I

3900 E. Mexico Avenue,
Denver, CO 80210



TRANSWESTERN

REAL ESTATE
SERVICES

Full floor sublease with
furniture included at
Colorado Blvd & I-25

AVAILABILITY

Suite 1200
12,170 SF

Rent
Negotiable

Term
Sublease thru February 29, 2024



LEASING INFORMATION

**Karen
Clarke**
303.407.1463
karen.clarke@transwestern.com

**Cheryl
Cassery**
720.372.4057
cheryl.cassery@transwestern.com

**Jack
Ellis**
303.952.5590
jack.ellis@transwestern.com

5251 DTC Parkway | Suite 1100
Greenwood Village, CO 80111
T 303.639.3000
www.transwestern.com

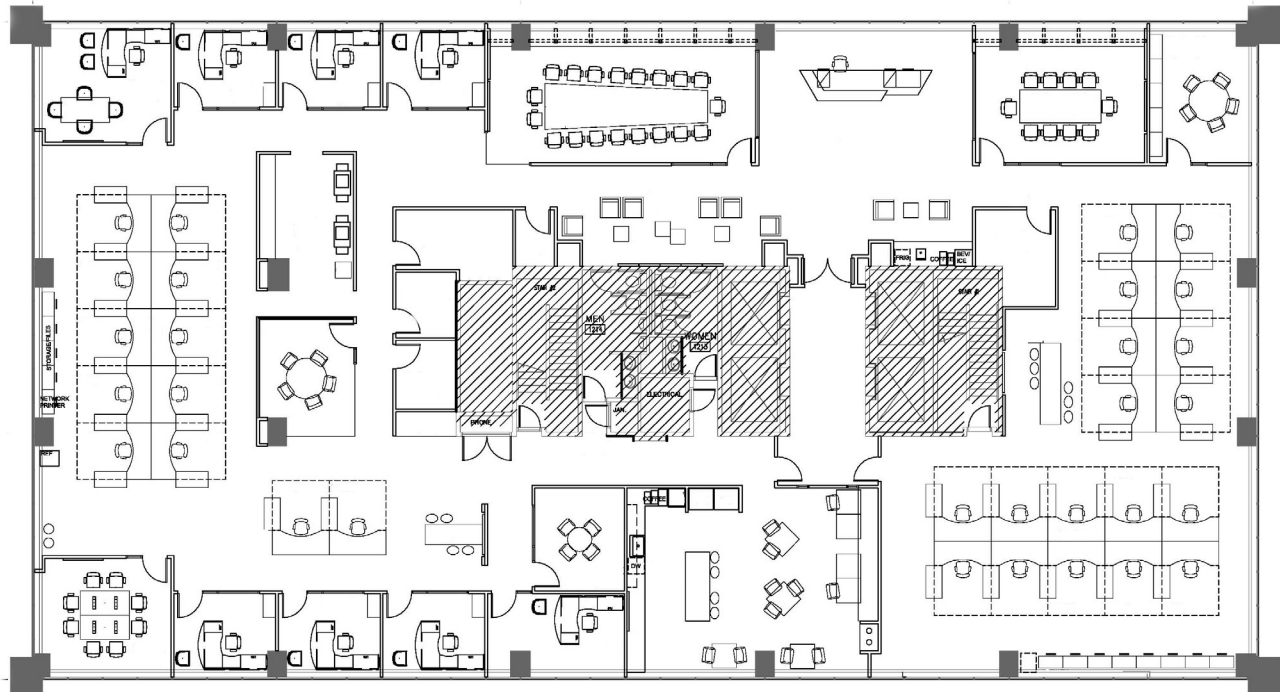
The information provided herein was obtained from sources believed reliable; however, Transwestern makes no guarantees, warranties or representations as to the completeness of accuracy thereof. The presentation of this property is submitted subject to errors, omissions, change of price or conditions, prior to sale or lease, or withdrawal without notice. Copyright © 2021 Transwestern.

SUITE 1200

12,170 SF

CLICK TO VIEW 3D VIRTUAL TOUR

9 private offices, 30 open workstations, 2 conference rooms, 5 huddle rooms and other meeting spaces, kitchen/break room



BUILDING AMENITIES

**Updated
lobby and
tenant
lounge**

**New
deli/café**

**Updated
conference
center**

**Fitness
center**

LEASING INFORMATION

**Karen
Clarke**

303.407.1463

karen.clarke@transwestern.com

**Cheryl
Casserly**

720.372.4057

cheryl.casserly@transwestern.com

**Jack
Ellis**

303.952.5590

jack.ellis@transwestern.com

5251 DTC Parkway | Suite 1100

Greenwood Village, CO 80111

T 303.639.3000

www.transwestern.com

The information provided herein was obtained from sources believed reliable; however, Transwestern makes no guarantees, warranties or representations as to the completeness of accuracy thereof. The presentation of this property is submitted subject to errors, omissions, change of price or conditions, prior to sale or lease, or withdrawal without notice. Copyright © 2021 Transwestern.