

HIGH QUALITY MEDICAL OFFICE SPACE FOR LEASE IN THE CAMELBACK CORRIDOR



THE CENTRE

4400 & 4444 NORTH 32ND STREET, PHOENIX

 TRANSWESTERN[®]

PROPERTY

- ±70,778 RSF

BUILDING FEATURES

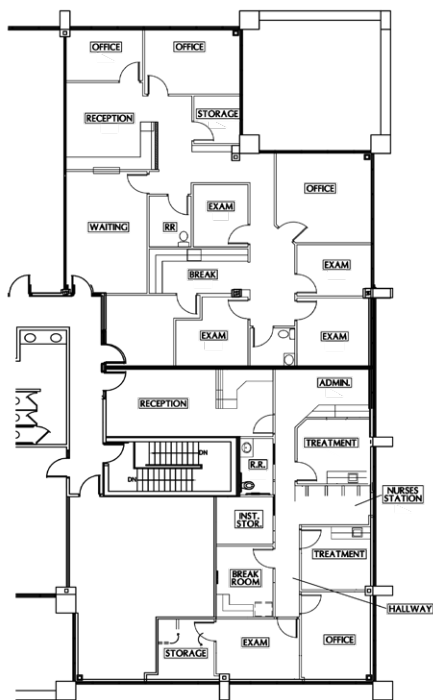
- 4:3:1,000 parking ratio
- Class A Medical Space
- Monument signage available

LOCATION HIGHLIGHTS

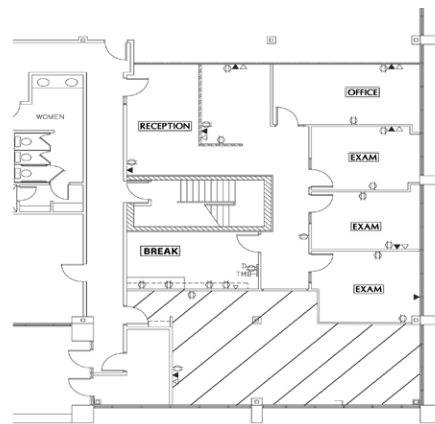
- Minutes from the prestigious Biltmore, Arcadia, Paradise Valley, and Central Phoenix neighborhoods.
- Easy access to major banks, retail, restaurant amenities and SR 51 Freeway
- 10 minutes from downtown Phoenix and Sky Harbor International Airport



SUITE 220 – 2,352 RSF

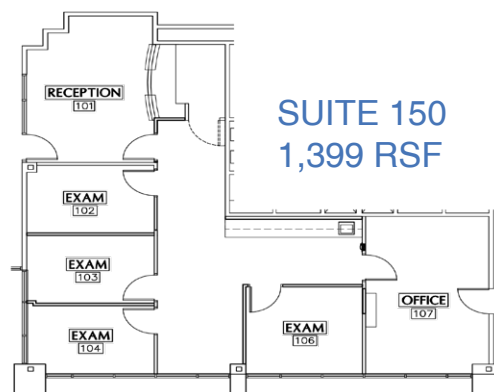


SUITE 230 – 1,639 RSF



SUITE 105 1,664 RSF

Contiguous – 3,991 RSF



SUITE 150 1,399 RSF

LEASING INFORMATION

Jim Achen, Jr.
602.954.9850
jim.achen@transwestern.com

Bill Zurek
602.954.9856
bill.zurek@transwestern.com

Brian Zurek
602.386.1185
bill.zurek@transwestern.com

T TRANSWESTERN®

2415 East Camelback Road, Suite 900
Phoenix, Arizona 85016

T 602.956.5000 F 602.956.5333
www.transwestern.com