



920 S. Freepoint Parkway

INDUSTRIAL SPACE FOR LEASE

Coppell, Texas

 Transwestern

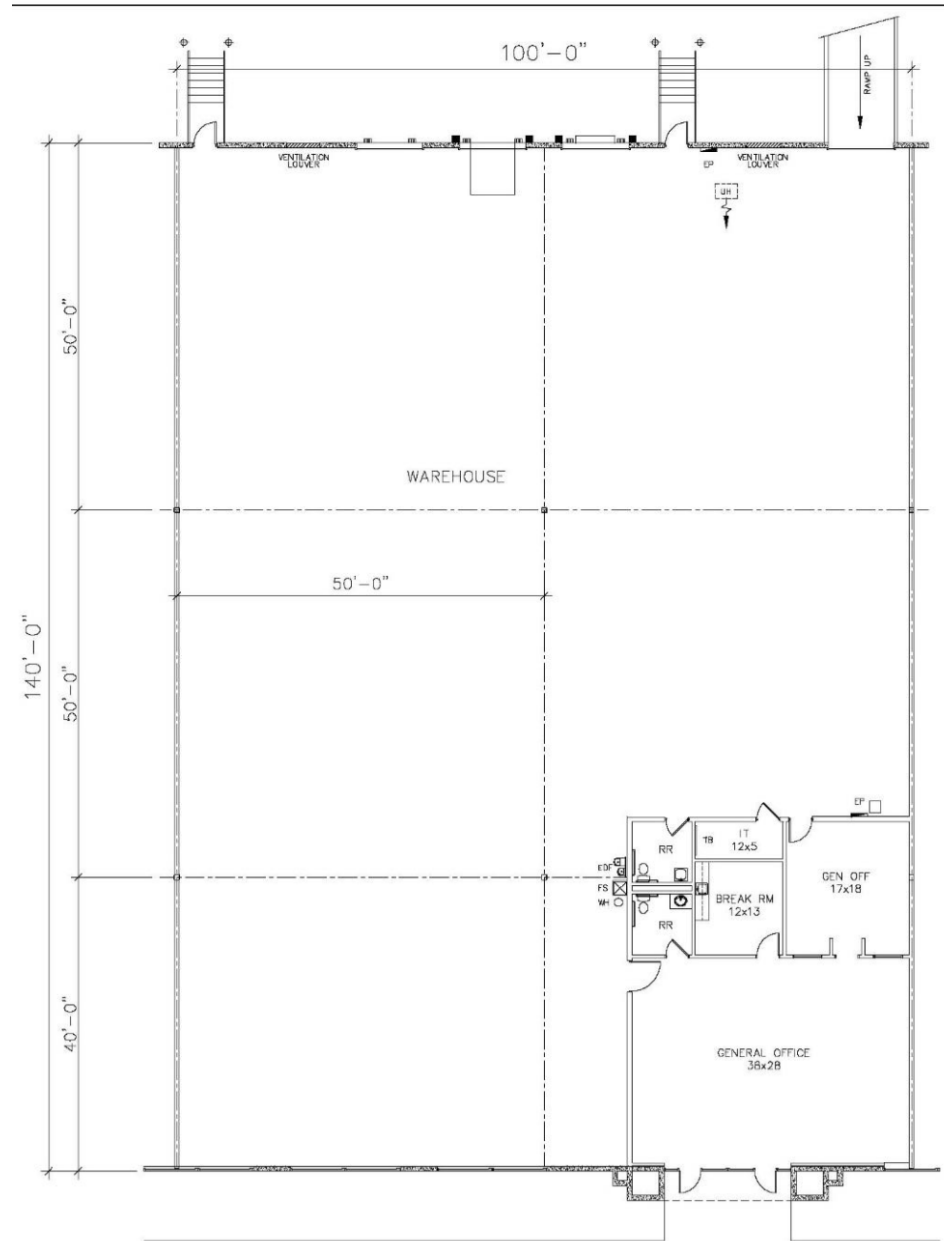
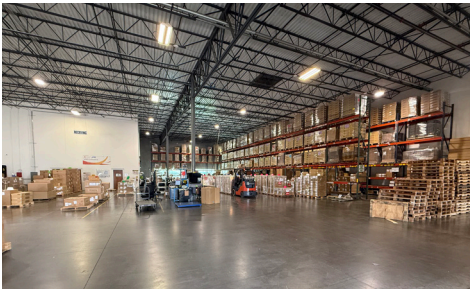
920 S. Freepoint Parkway

Suite #220 • 14,095 SF AVAILABLE

3 dock doors

1 ramp door

Lease Expiration 11/30/2028



Justine Bollman

Analyst
(214) 237-5008
justine.bollman@transwestern.com

Barrett Bufkin

Managing Director
(214) 704-6352
barrett.bufkin@transwestern.com