

TIMBERLANDS
OFFICE PARK

CLASS A
OFFICE SPACE

RENOVATIONS
COMPLETE

NORTH TROY
SUBMARKET



TRANSWESTERN
REAL ESTATE
SERVICES

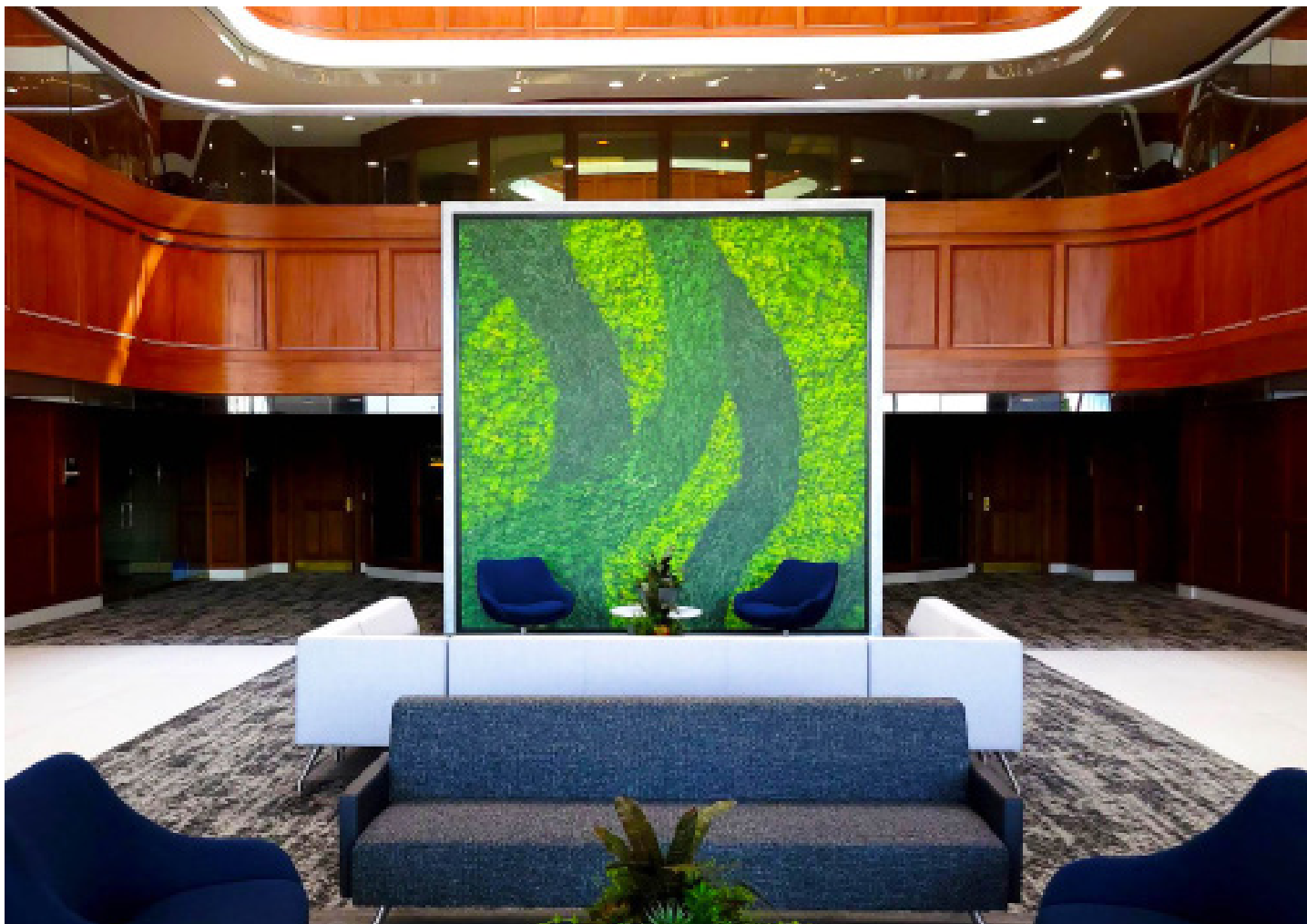
TIMBERLANDS II

5435 Corporate Drive - Troy, MI 48098

timberlandsofficepark.com

FD | STONEWATER

WASHINGTON, DC / LOS ANGELES / NEWPORT BEACH



Availability:

- Main Floor (8,000-26,000sf)
- Second Floor (2,000 - 3,000sf)
- Third Floor (10,000sf)

Building Amenities:

- On-site management
- Lofted 12.6" Ceiling Heights Available
- Parking Ratio 4.84 /1,000

RENOVATIONS COMPLETE

- Total common area renovation
- Modernized elevators & bathrooms
- New HVAC and HVAC controls
- Recreation/outdoor seating area with WIFI
- Conference center
- Tenant lounge
- Food service

Features

- Convenient access to I-75
- Immediate area: hotels, dining & retail
- Oakland/Troy Executive Airport (5 miles)
- Prominent building signage available
- Natural wooded setting
- New Parking Lot

Leasing Information:

**William
Harvey IV**
248.797.9455
bill.harvey@transwestern.com

**Chuck
Howard**
248.821.7722
charles.howard@transwestern.com

The information provided herein was obtained from sources believed reliable; however, Transwestern makes no guarantees, warranties or representations as to the completeness of accuracy thereof. The presentation of this property is submitted subject to errors, omissions, change of price or conditions, prior to sale or lease, or withdrawal without notice. Copyright © 2020 Transwestern.



TRANSWESTERN

REAL ESTATE
SERVICES

TIMBERLANDS II

5435 Corporate Drive - Troy, MI 48098

timberlandsofficepark.com



Leasing Information:

**William
Harvey IV**

248.797.9455

bill.harvey@transwestern.com

**Chuck
Howard**

248.821.7722

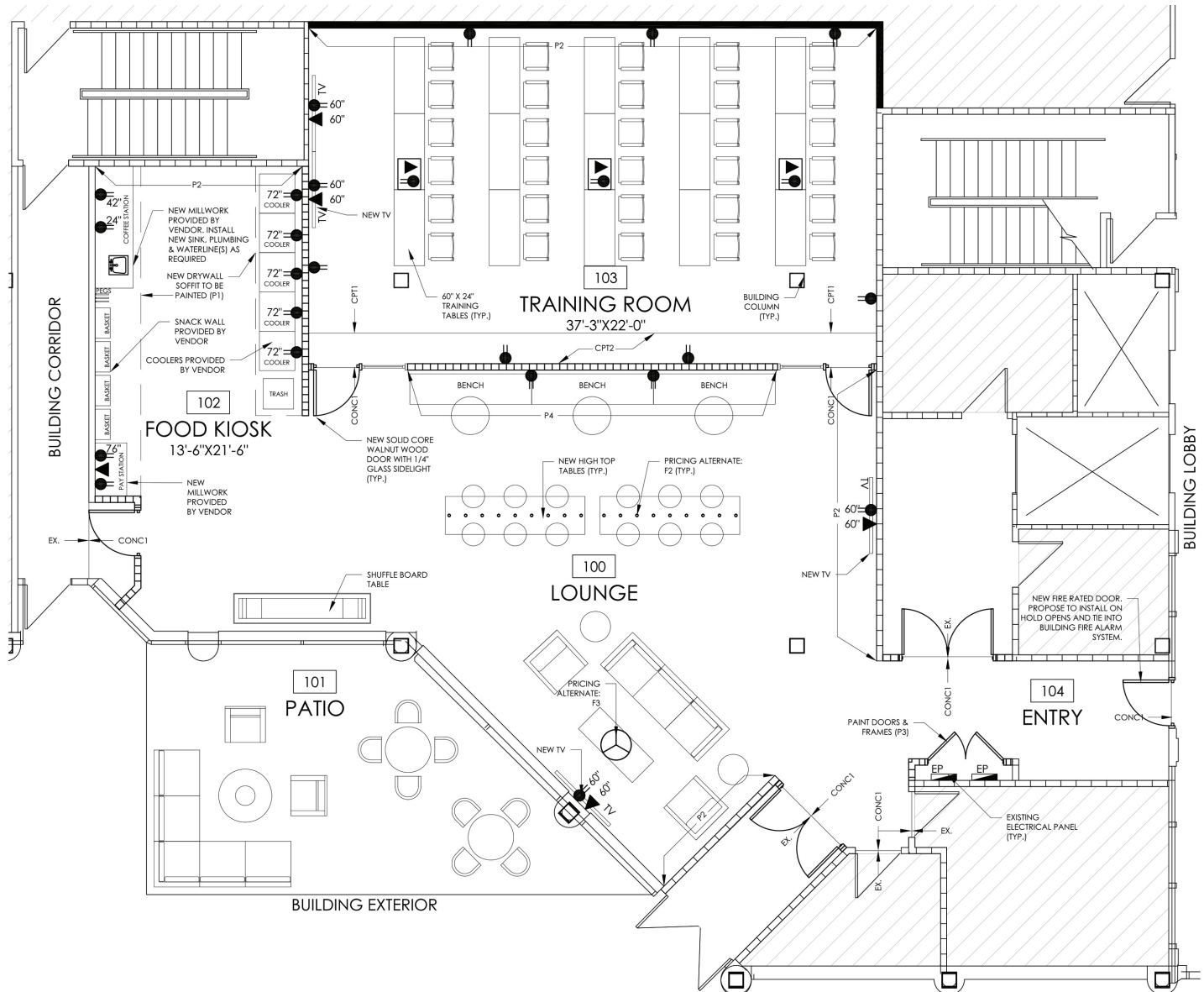
charles.howard@transwestern.com

The information provided herein was obtained from sources believed reliable; however, Transwestern makes no guarantees, warranties or representations as to the completeness of accuracy thereof. The presentation of this property is submitted subject to errors, omissions, change of price or conditions, prior to sale or lease, or withdrawal without notice. Copyright © 2020 Transwestern.

TIMBERLANDS II

5435 Corporate Drive - Troy, MI 48098
timberlandsofficepark.com

TENANT LOUNGE | CONFERENCE CENTER & PATIO



Leasing Information:

**William
Harvey IV**
248.797.9455
bill.harvey@transwestern.com

**Chuck
Howard**
248.821.7722
charles.howard@transwestern.com

The information provided herein was obtained from sources believed reliable; however, Transwestern makes no guarantees, warranties or representations as to the completeness of accuracy thereof. The presentation of this property is submitted subject to errors, omissions, change of price or conditions, prior to sale or lease, or withdrawal without notice. Copyright © 2020 Transwestern.

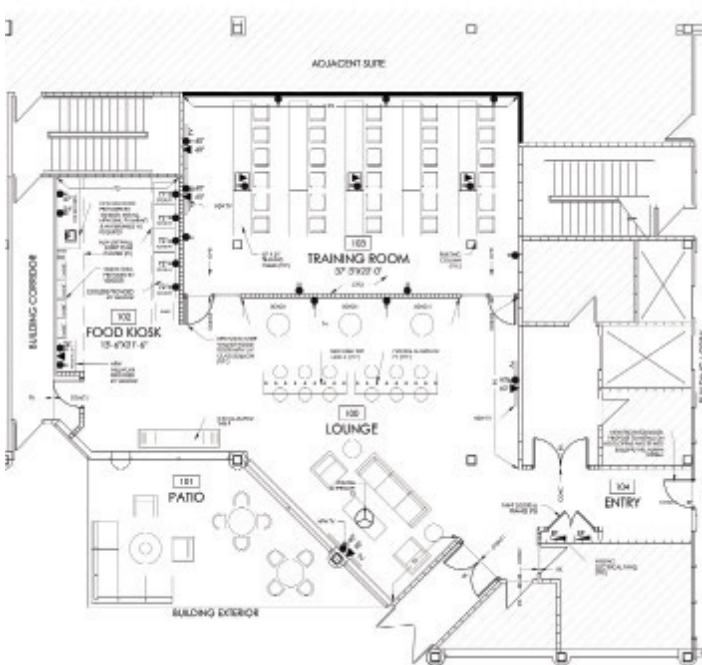


TRANSWESTERN

REAL ESTATE
SERVICES

TIMBERLANDS II

5435 Corporate Drive - Troy, MI 48098
timberlandsofficepark.com



CONFERENCE CENTER

For more information on how to reserve the conference center please contact the management office.

248.952.5250

Timberlands Management Office

1450 W. Long Lake Rd, Suite 150
Troy, MI 48098