



TRANSWESTERN

REAL ESTATE
SERVICES

BREMER

Edina Realty

BREMER BANK BUILDING

OFFICE SPACE FOR LEASE

BREMER
ENTRANCE

11800

PROPERTY OVERVIEW

Bremer Bank Building



REAL ESTATE
SERVICES

PROPERTY DETAILS

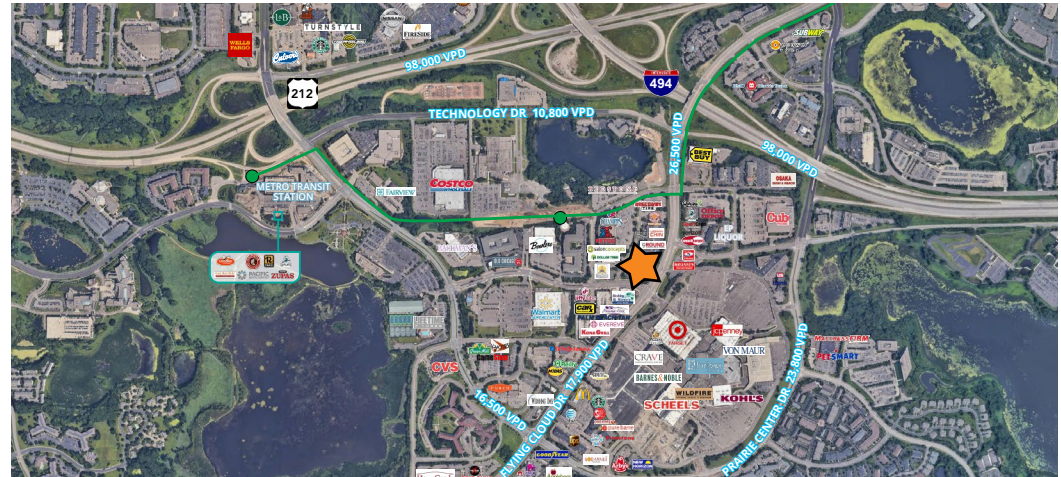
Address:	11800 Singletree Lane Eden Prairie, MN 55344
Size:	39,838 sf
# of Floors	4
Year Built:	1981
Parking:	6.04:1000

FOR LEASE

Suite 105:	695 sf
Suite 305:	3,806 sf
Gross Rent:	\$22.50 psf

HIGHLIGHTS

- Excellent location with visibility off of Flying Cloud Drive
- Close proximity to retail amenities
- Easy access to I-494 and US-212



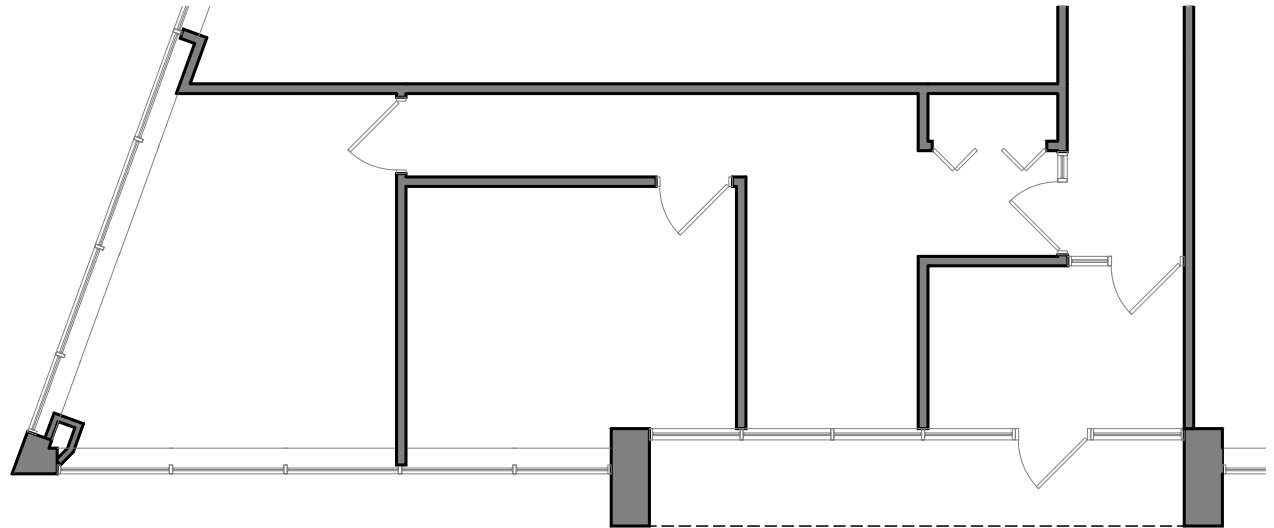
LEASING INFORMATION:

Chad Anvary | 612.359.1642 | chad.anvary@transwestern.com
Bryan Beltrand | 612.359.1616 | bryan.beltrand@transwestern.com

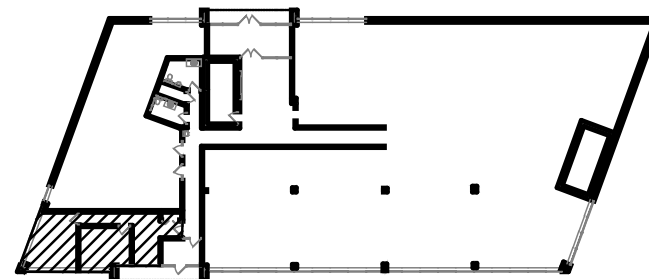
The information provided herein was obtained from sources believed reliable; however, Transwestern makes no guarantees, warranties or representations as to the completeness of accuracy thereof. The presentation of this property is submitted subject to errors, omissions, change of price or conditions, prior to sale or lease, or withdrawal without notice.
Copyright © 2020 Transwestern.

FLOOR PLAN | FIRST FLOOR

Bremer Bank Building



Building Key: First Floor



SUITE 105

695 sf

LEASING INFORMATION:

Chad Anvary | 612.359.1642
chad.anvary@transwestern.com

Bryan Beltrand | 612.359.1616
bryan.beltrand@transwestern.com

FLOOR PLAN | THIRD FLOOR

Bremer Bank Building



SUITE 305

3,806 sf

LEASING INFORMATION:

Chad Anvary | 612.359.1642
chad.anvary@transwestern.com

Bryan Beltrand | 612.359.1616
bryan.beltrand@transwestern.com

