



TRANSWESTERN

REAL ESTATE  
SERVICES

DR. WILLIAMS & WIMMER DENTISTRY

**MEDICAL/OFFICE BUILDING**

**PLYMOUTH PROFESSIONAL II**



# PROPERTY OVERVIEW

## BUILDING INFORMATION

- × **Location:** 9800 Rockford Road  
Plymouth, MN 55442
- × **Building Size:** 7,700 sq. ft.
- × **# of Floors:** 1
- × **Year Built:** 1993
- × **Parking:** 40 spaces

## AVAILABILITY

- × Suite 100 | 5,212 SF (available 12.1.22)
- × Suite 200 | 769 SF

## HIGHLIGHTS

- × Building exterior and pylon signage available
- × Great exposure + easy access to Rockford Rd & Hwy 169
- × Located on highly visible corner
- × Medical/Office building with ample surface

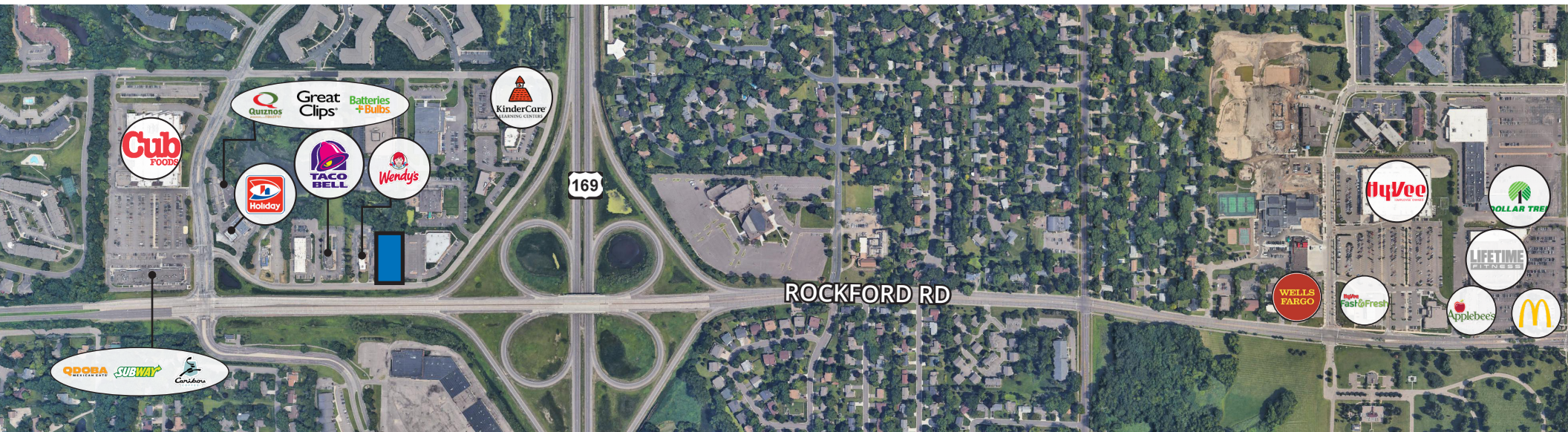
## ASKING RATES

- × \$16.00 PSF Net

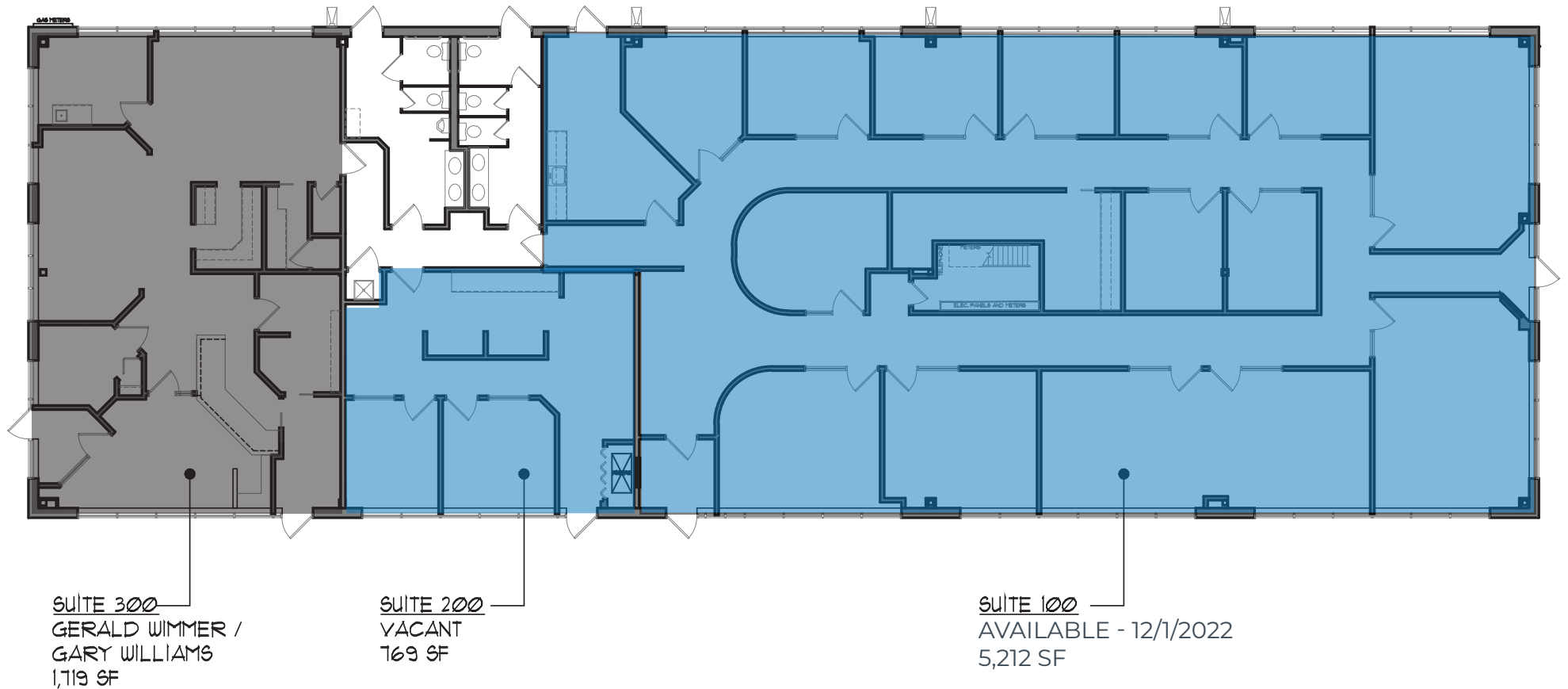
## 2022 est. TAX + OPS

- × \$11.74 [\$5.88 psf Tax + \$5.86 psf Ops]

## AREA AMENITIES



# FLOOR PLAN



## CONTACT:

Bryan Beltrand | 612.359.1616 | [bryan.beltrand@transwestern.com](mailto:bryan.beltrand@transwestern.com)  
Chad Anvary | 612.359.1642 | [chad.anvary@transwestern.com](mailto:chad.anvary@transwestern.com)



**TRANSWESTERN**

REAL ESTATE  
SERVICES