



# SUBLEASE

Centennial Medical Pavilion II

**SUITE 400 - 2,896 RSF**  
**4461 COIT RD. FRISCO, TX 75035**

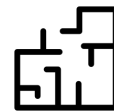


## BUILDING DETAIL

- 4 Story, Class A Medical Building
- Convenient patient drop-off area
- Immediate access to SH-121 and close proximity to Dallas N Tollway
- Entrance from elevator lobby
- Approximately 2,896 RSF
- Large waiting area with exterior windows
- 6 exam rooms



## UNIT 400



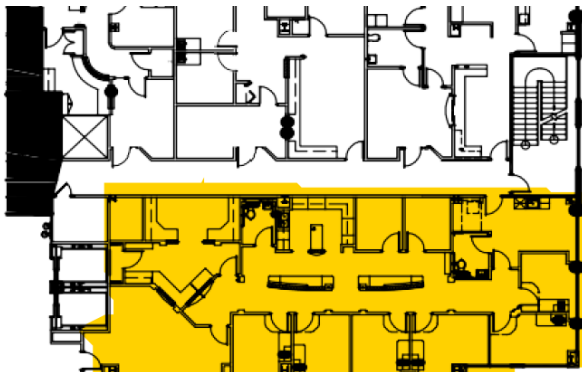
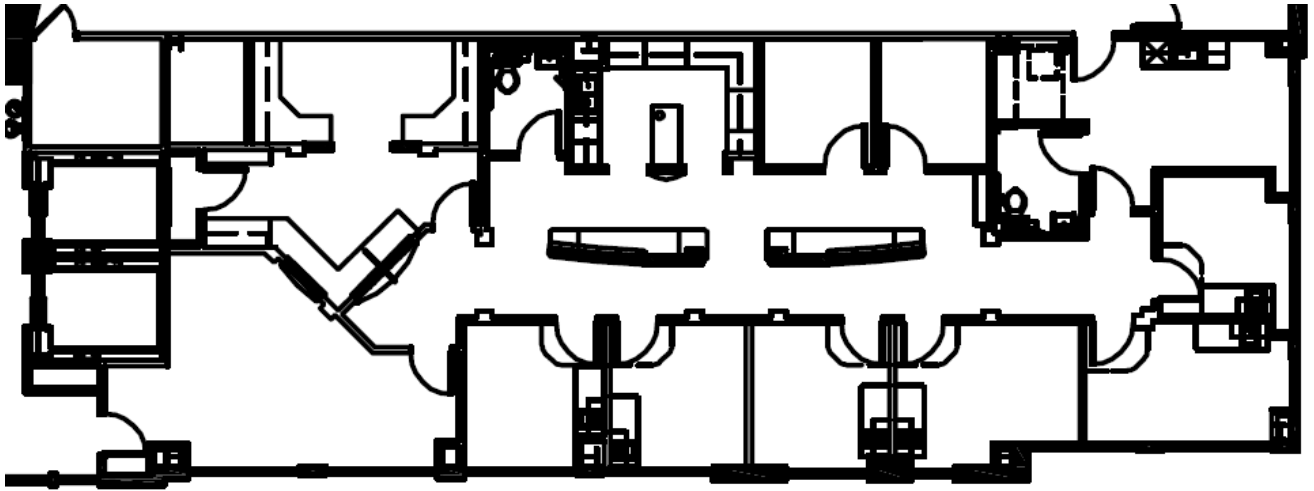
## FLOOR/SITE PLAN

- Large staff kitchen and bathroom
- Separate patient bathroom
- Inviting atmosphere with good exterior glass
- Term Expires January 31, 2021
- \$26.50 psf + EJ
- Spaces metered separately; only pay for electricity used and janitorial services required.

## Contact us

NORA HOGAN, CCIM, SIOR  
PRINCIPAL  
972-446-4509  
NORA.HOGAN@TRANSWESTERN.COM

JORDAN WADE  
VICE PRESIDENT  
214-446-4531  
JORDAN.WADE@TRANSWESTERN.COM



Suite location on 4th floor

## FLOOR PLAN

### Contact us

NORA HOGAN, CCIM, SIOR  
PRINCIPAL  
972-446-4509  
NORA.HOGAN@TRANSWESTERN.COM

JORDAN WADE  
VICE PRESIDENT  
214-446-4531  
JORDAN.WADE@TRANSWESTERN.COM