

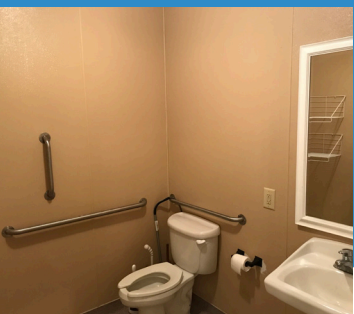
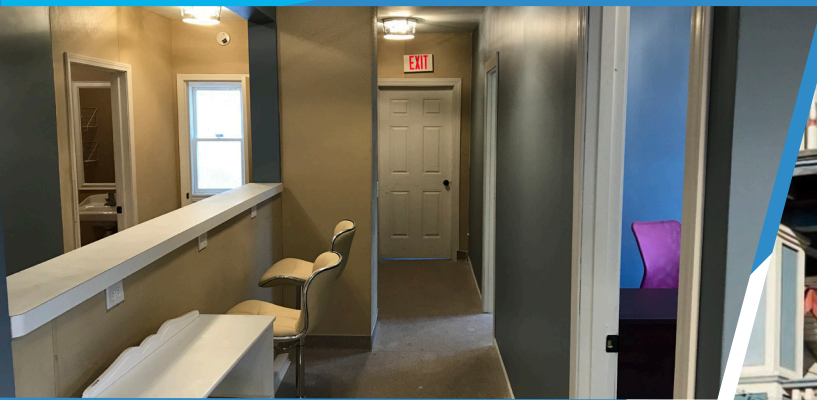
RETAIL OR OFFICE SPACE FOR LEASE

**1363 GRAND AVE**

ST PAUL, MN 55105



TRANSWESTERN



## Property Specifications:



**Building Size:** 5,000 RSF



**Available Space:** 1,064 RSF



**Year Built:** 1912



**Rental Rates:** \$21.00 - \$23.00 PSF Gross



**Parking:** 2-3 designated spaces off street

## Property Amenities:

- Building signage available
- Located on bus public transit line
- High traffic area on Grand Avenue
- Great access and visibility
- Abundant area amenities
- Storage available on lower level
- Garage space available

## For More Information:

**Brett Draxler**

612.359.1692

[brett.draxler@transwestern.com](mailto:brett.draxler@transwestern.com)



TRANSWESTERN