

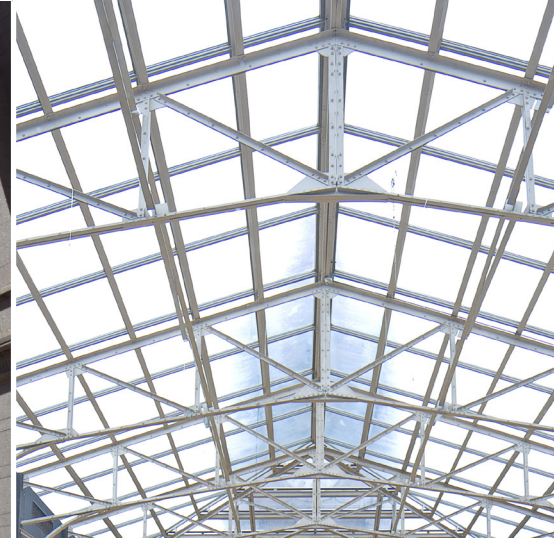


TRANSWESTERN

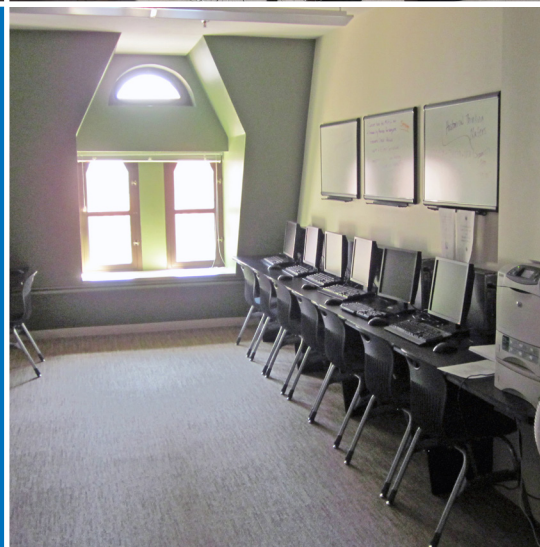
REAL ESTATE
SERVICES

LANDMARK CENTER

75 WEST FIFTH STREET, ST PAUL, MN 55102



EXCELLENT
LOCATION



48,012
TOTAL SF

PROPERTY SPECIFICATIONS

Property Summary

- **Rentable Square Feet:** 48,012 SF
- **Available Space:** 212 - 5,000 SF
- **Year Built:** 1902
- **Elevators:** Three (3) passenger, one (1) freight
- **Gross Rental Rate:** \$12.00 - \$18.00

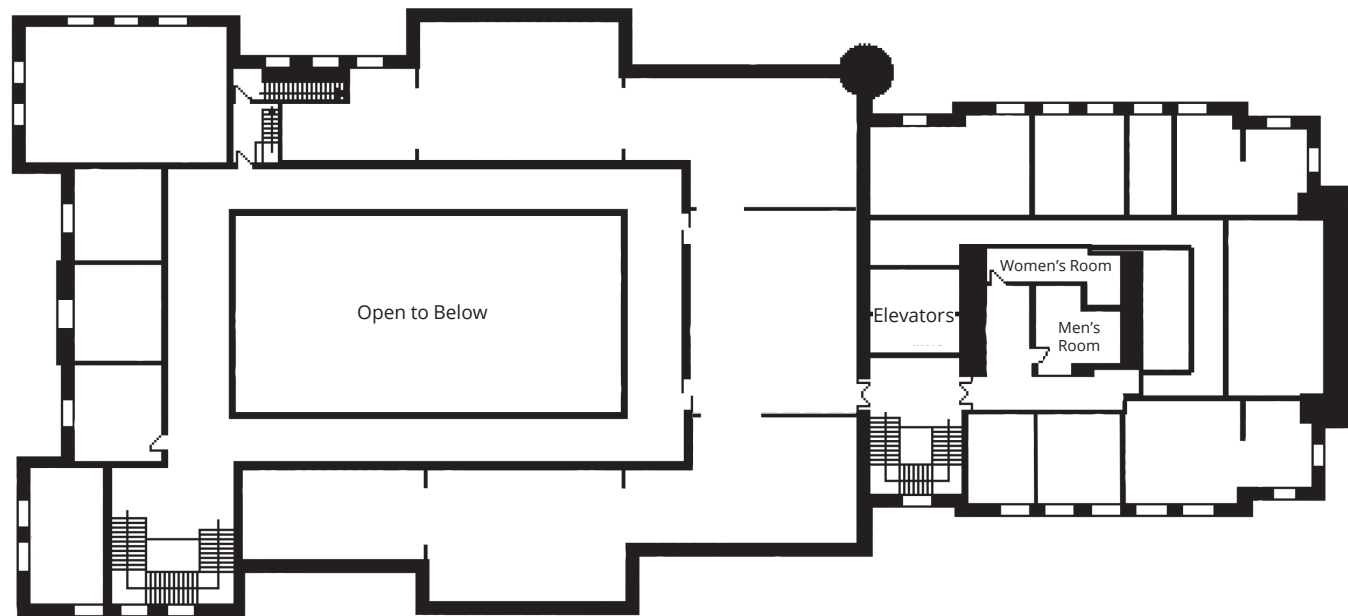
Property Amenities

- Beautifully restored historic building
- Located in the charming Rice Park neighborhood
- Close to The Saint Paul Hotel, RiverCentre, Xcel Energy Center and the Ordway Center for the Performing Arts
- Amenities include a gift shop and museums
- On-site property manager
- On several bus lines
- Many area restaurants nearby

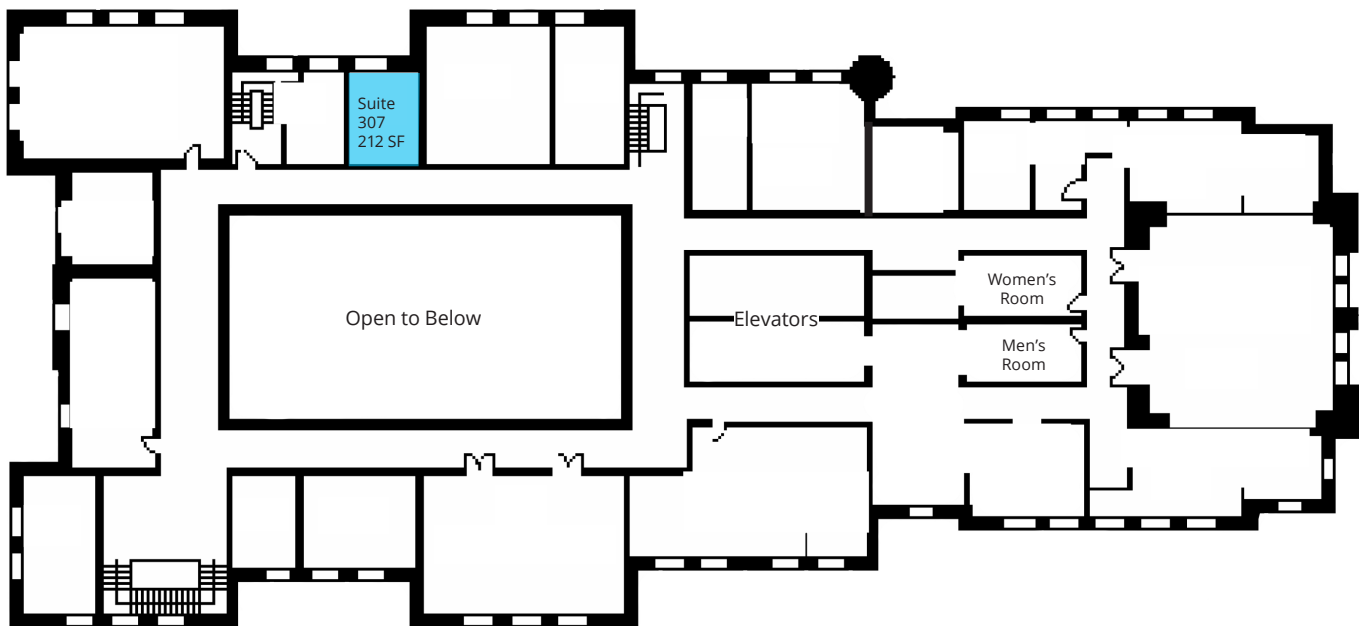


FLOORPLANS

2nd Floor

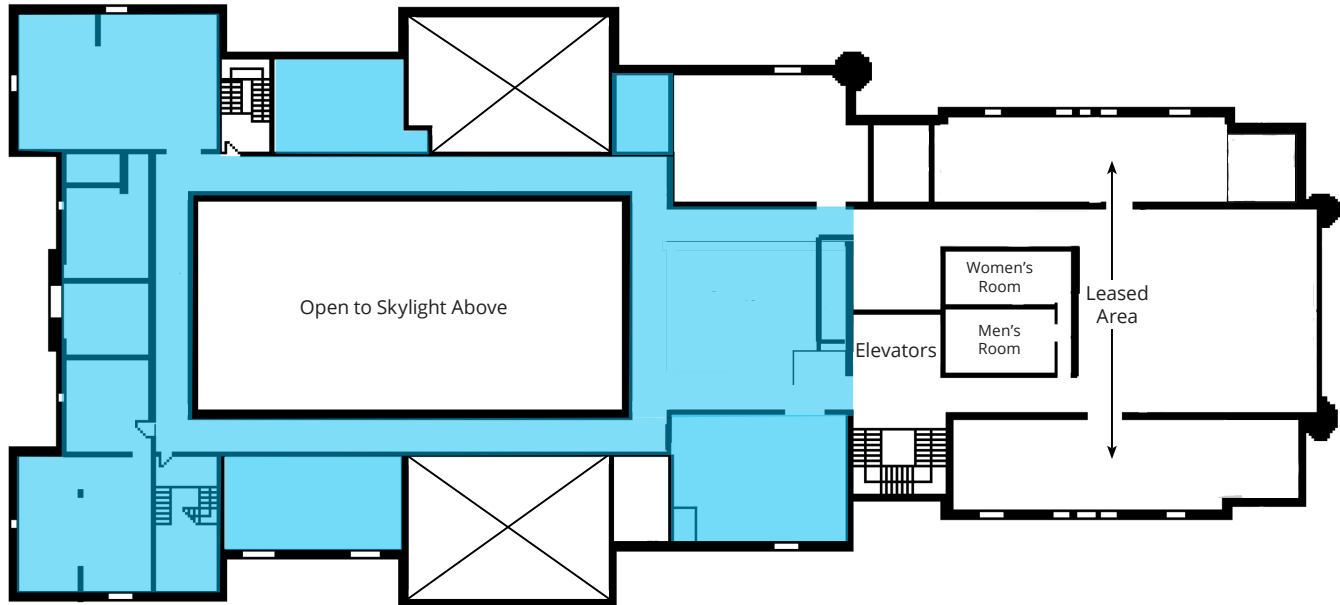


3rd Floor - 212 SF

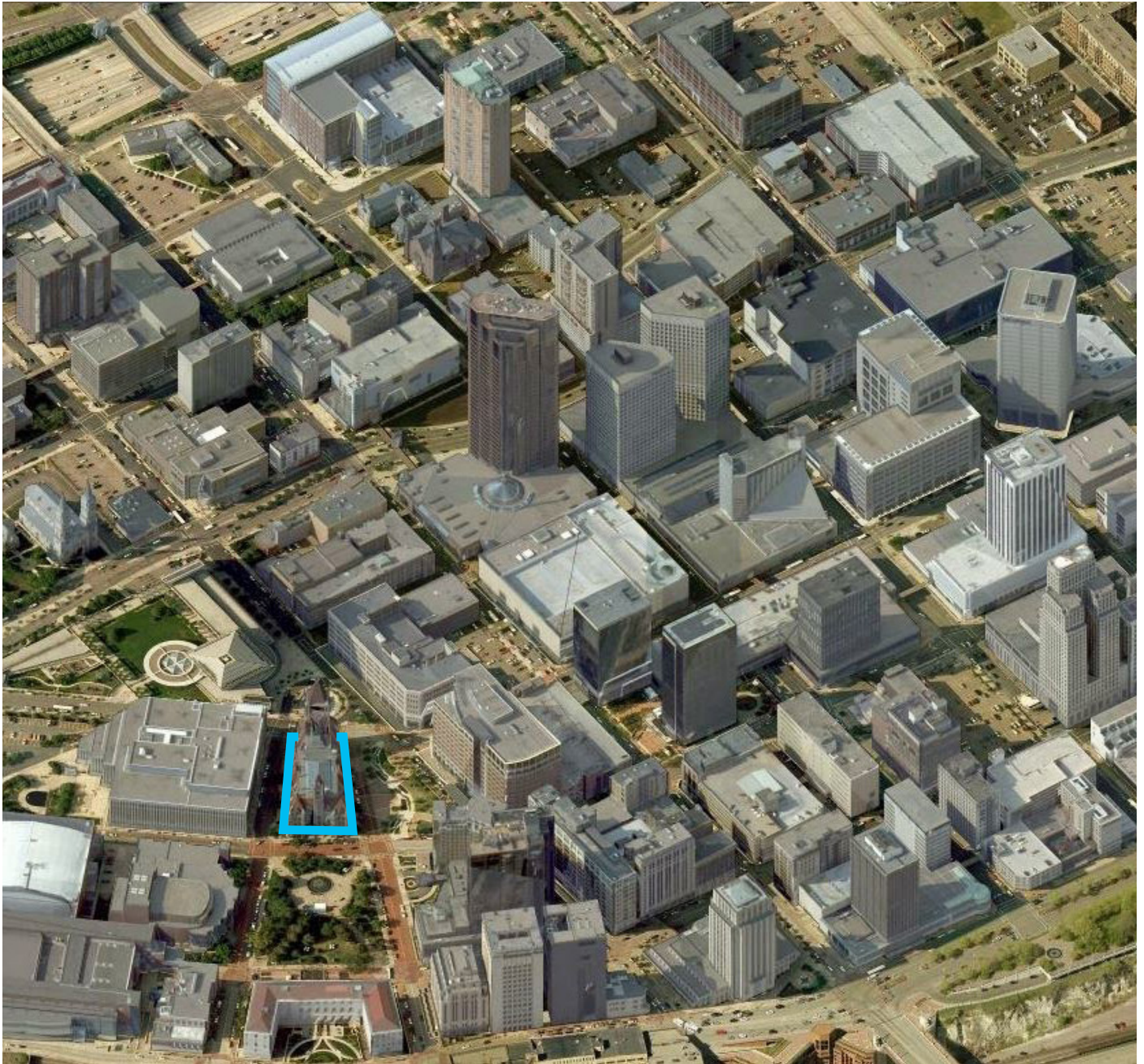


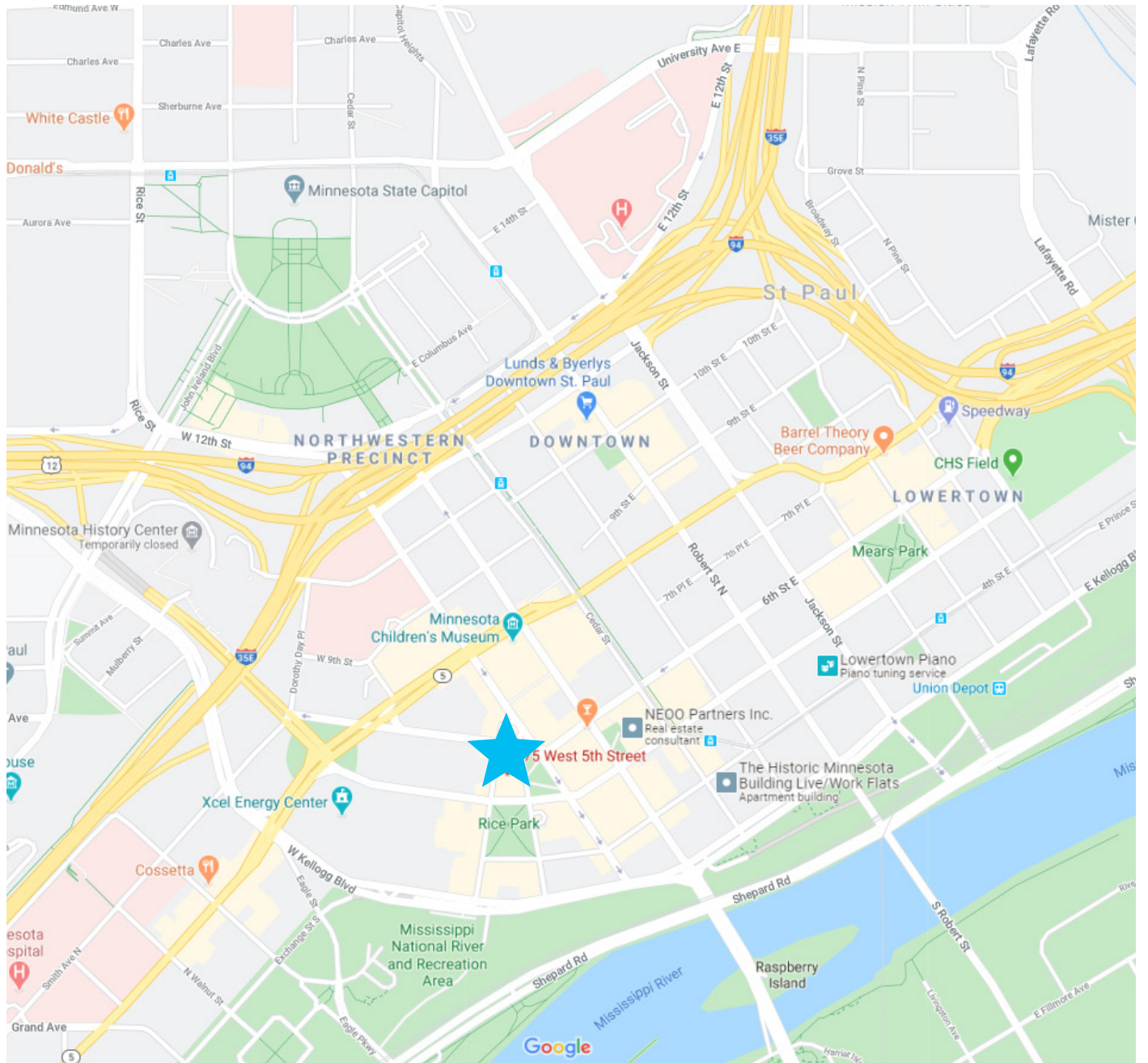
FLOORPLANS

5th Floor - approx. 5,000 contiguous SF



NEARBY AMENITIES







TRANSWESTERN

REAL ESTATE
SERVICES

THINKING BEYOND THE OBVIOUS

ERIC RAPP

612.359.1635

eric.rapp@transwestern.com

706 Second Avenue South, Suite 100, Minneapolis, MN 55402

| 612.343.4200

| www.transwestern.com