

4,350 SF

AVAILABLE FOR LEASE

OFFICE // WAREHOUSE SPACE

6767 Portwest Drive, Suite 150 // Houston, TX 77024

WP
WESTPORT
BUSINESS PARK

CONTACT
INFO

Jude Filippone // P: 713.270.3318 // E: Jude.Filippone@transwestern.com

Brian Gammill // P: 713.270.3321 // E: Brian.Gammill@transwestern.com

AERIAL MAP

Direct access to I-10, Loop 610, I-45 North, Downtown and the Galleria area with excellent accessibility to all major thoroughfares.

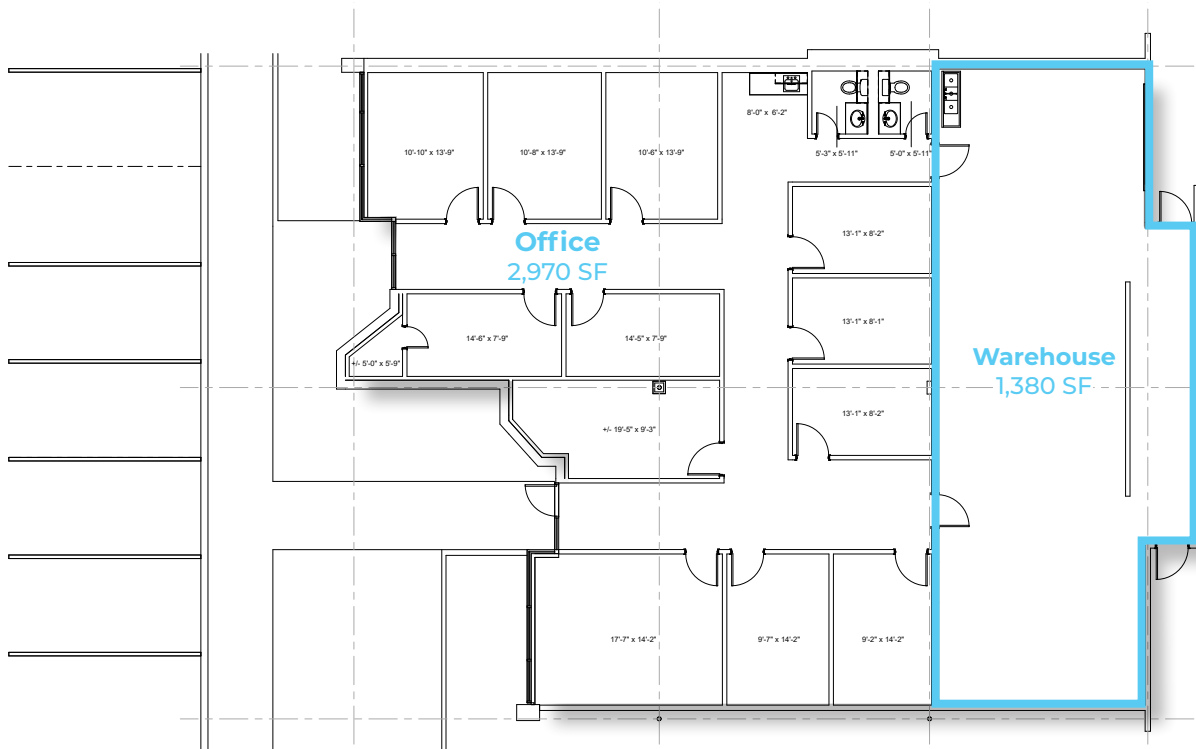
WP
WESTPORT
BUSINESS PARK












- | | | | | | | | | | |
|---|-----------------------------------|---|------------------------------|---|------------------------|---|----------------------------------|----|---------------------|
| 1 | Memorial Park Golf Course | 2 | Memorial Park Running Trails | 3 | Greenway / Upper Kirby | 4 | Highland Village Shopping Center | 5 | River Oaks District |
| 6 | Houston Arboretum & Nature Center | 7 | Galleria Area | 8 | Uptown Park | 9 | The Houstonian Hotel, Club & Spa | 10 | Houston Polo Club |

FLOOR PLAN

A master-planned park with a strong corporate identity, extensive landscaping, and attractive individual glass storefronts.



Space Features

-  4,350 SF total
-  Office -2,970 SF | Warehouse - 1,380 SF
-  Strong corporate identity
-  Freeway visibility
-  Tilt-up concrete construction with brick veneer
-  Grade level / Rear loading
-  Extensive landscaping
-  Excellent accessibility
-  12'-0" Clear Height
-  Glass storefront



WP
WESTPORT
BUSINESS PARK