

# PRESTON RIDGE

3330 Preston Ridge Rd, Alpharetta, GA 30005

**SOUTHEAST  
HEALTHCARE  
ADVISORY  
SERVICES**

**STEVE HALL**  
Senior Managing Director,  
Healthcare Advisory Services  
404.842.6560  
steve.hall@transwestern.com

**JOHN V. LOPEZ, CCIM, RPA**  
Managing Director,  
Healthcare Advisory Services  
404.842.6562  
john.lopez@transwestern.com

**BO STUART**  
Vice President,  
Healthcare Advisory Services  
404.842.6556  
bo.stuart@transwestern.com

**MARSH HAZLEHURST**  
Senior Associate,  
Healthcare Advisory Services  
404.842.6574  
marsh.hazlehurst@transwestern.com

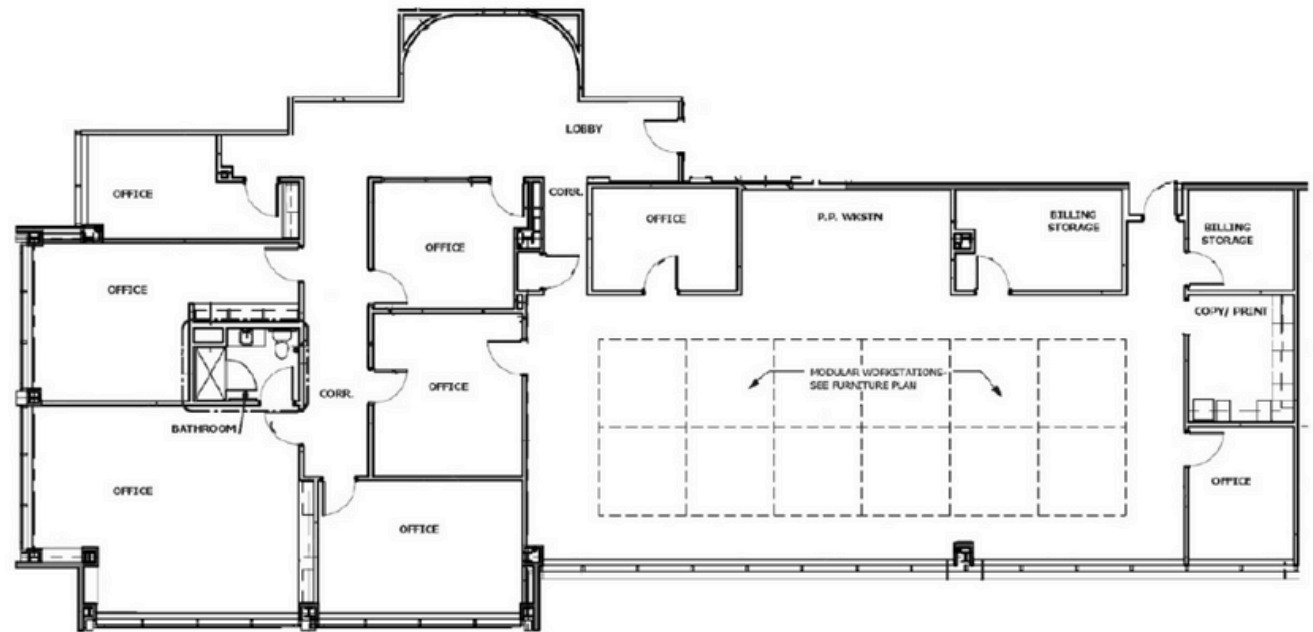


**TRANSWESTERN**  
REAL ESTATE  
SERVICES



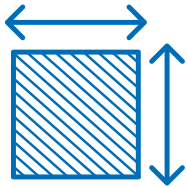
## AVAILABLE FLOORPLANS

**SUITE 333**  
2,500 - 5,361 RSF





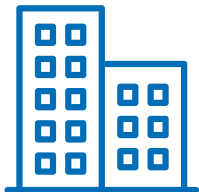
## PROPERTY HIGHLIGHTS



5,361 +/- RSF Medical Suite  
Available For Lease



Excellent Access to GA 400  
and Less Than a Mile From  
Avalon

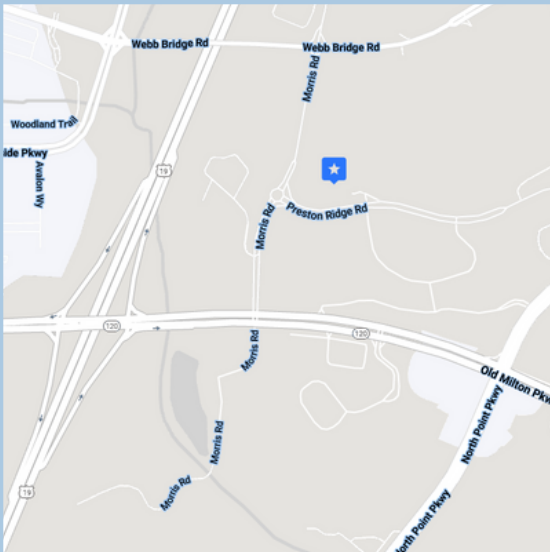


Multi-Tenant Medical Office  
Building with New Ownership  
and Management



Aggressive TI packages







# Let's do this.

## SOUTHEAST HEALTHCARE ADVISORY SERVICES

### STEVE HALL

Senior Managing Director,  
Healthcare Advisory Services

404.842.6560

[steve.hall@transwestern.com](mailto:steve.hall@transwestern.com)

### JOHN V. LOPEZ, CCIM, RPA

Managing Director,  
Healthcare Advisory Services

404.842.6562

[john.lopez@transwestern.com](mailto:john.lopez@transwestern.com)

### BO STUART

Vice President,  
Healthcare Advisory Services

404.842.6556

[bo.stuart@transwestern.com](mailto:bo.stuart@transwestern.com)

### MARSH HAZLEHURST

Senior Associate,  
Healthcare Advisory Services

404.842.6574

[marsh.hazlehurst@transwestern.com](mailto:marsh.hazlehurst@transwestern.com)